

MODULAR ELECTRIC OPERATED CHECK VALVE

TYPE EREM103...

VALVOLA DI RITEGNO A COMANDO ELETTRICO

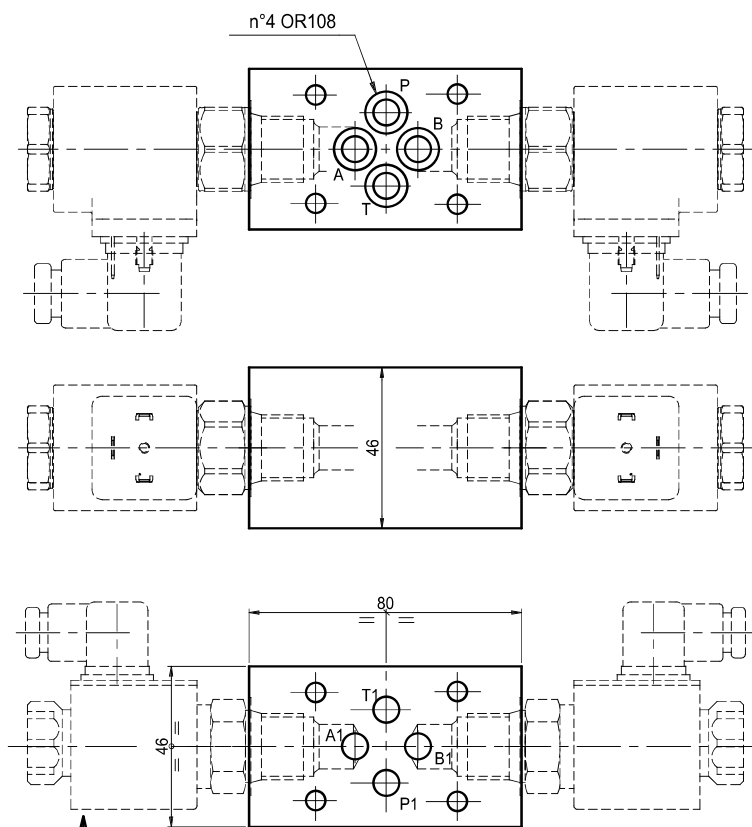
TIPO EREM103...



Electric operated modular check valve.

Valvola di ritegno a comando elettrico-CETOP 3, per montaggio modulare

Weight / Peso = 1.2 Kg



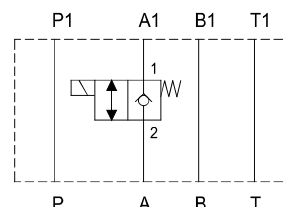
In "P" version coil "A" side
Nella versione "P" solenoide lato "A"

ordering code:

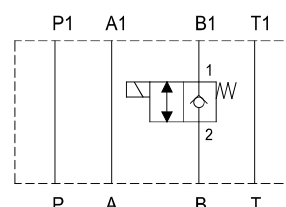
Esempio di ordinazione: **E** **RE** **M** **10** **3** *****

- EUROFLUID = E
- Electric check valve = RE
Ritegno elettrico =
- type of modular mounting = M
tipo modulare =
- Standard version = 10
Versione standard =
- CETOP 3
- Check valve on / Ritegno su =
A
B
AB
P

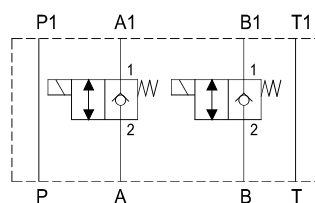
TYPE / TIPO EREM103A



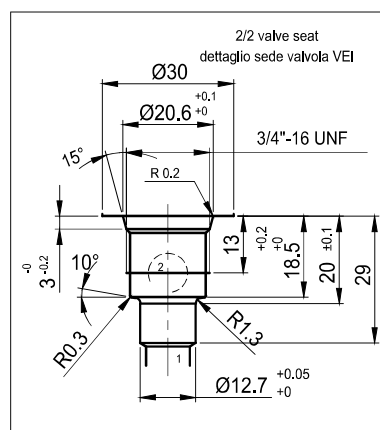
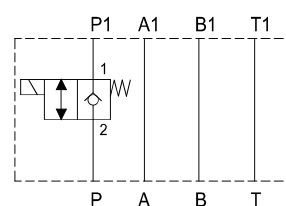
TYPE / TIPO EREM103B



TYPE / TIPO EREM103AB



TYPE / TIPO EREM103P



Notes: see page 94 for technical characteristics of valve 2/2
NOTA: Per informazioni tecniche relative alla valvola 2/2 vedere pag 94

MODULAR ELECTRIC OPERATED CHECK VALVE
VALVOLA DI RITEGNO A COMANDO ELETTRICO