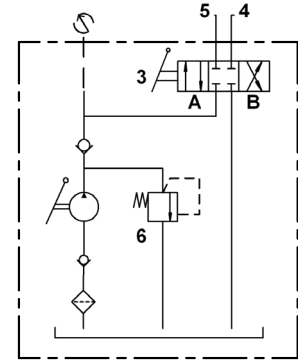
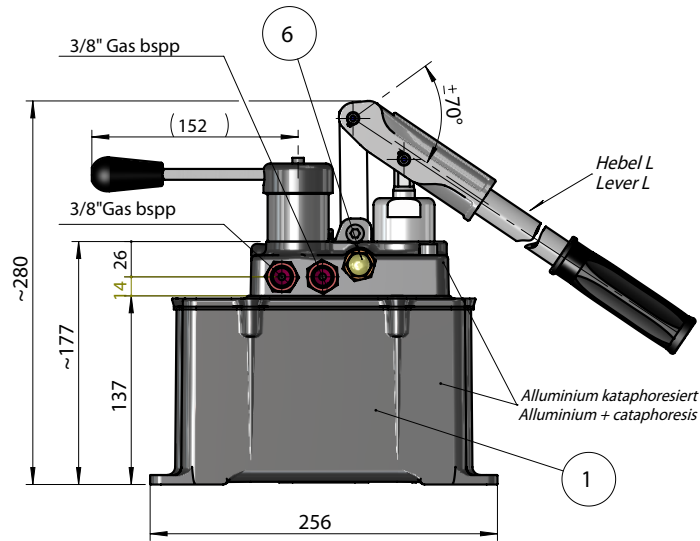


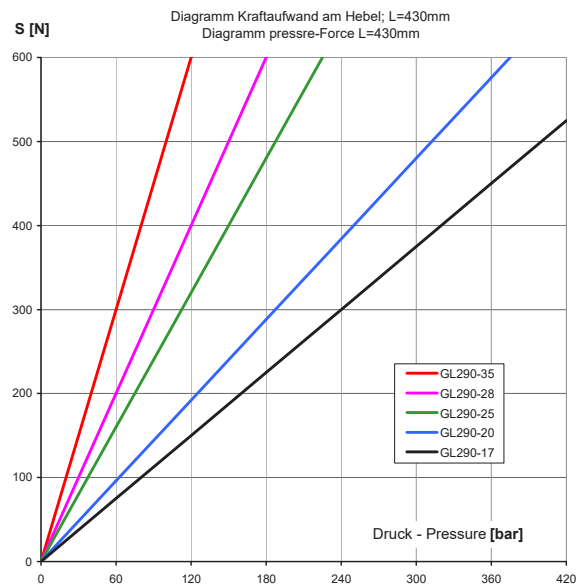
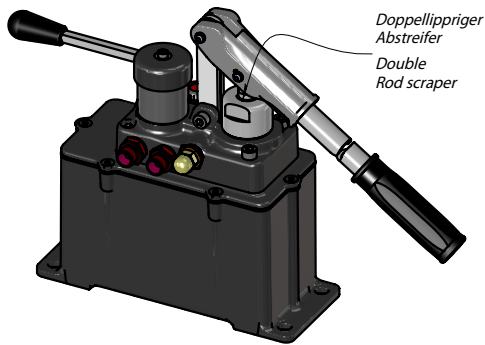
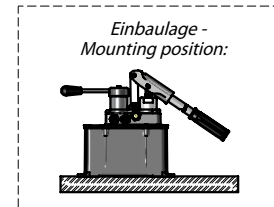
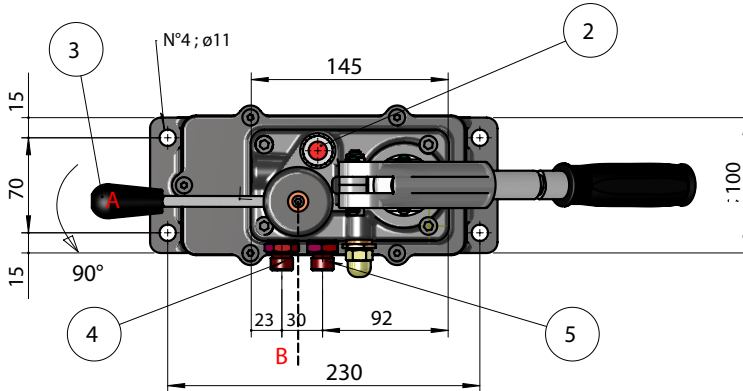
## Pumpe Typ GL290 - Pump Type GL290

*Doppelhubfunktion mit integriertem Umschaltventil für doppelwirkende Zylinder*  
*Double-Stroke function with flow diverter included, for double cylinder*



Gewicht - Weight ~6-6,5 [kg]

- 1 Tank 2,0 l
- 2 Öl-Einfüllstopfen - Filler Plug
- 3 Hebel Umschaltventil - Oil Flow Diverter Lever
- 4 Druckanschluss 1 - Pressure Port 1
- 5 Druckanschluss 2 - Pressure Port 2
- 6 Druckbegrenzungsventil - Relief Valve



TYP TYPE	Fördervolumen Displacement [cm³]	Druck Pressure [bar]
<b>GL290-17</b>	11	380
<b>GL290-20</b>	16	280
<b>GL290-25</b>	25	180
<b>GL290-28</b>	32	150
<b>GL290-35</b>	40	100

*Unverbindliche Angaben. Änderungen vorbehalten. - Dimensions not binding. Modifications reserved without prior notice.*  
*Property of HANSA-TMP SRL. Copying without authorisation will be persecuted by Law.*  
*Eigentum von HANSA-TMP SRL. Nicht genehmigtes Kopieren wird strafrechtlich verfolgt.*