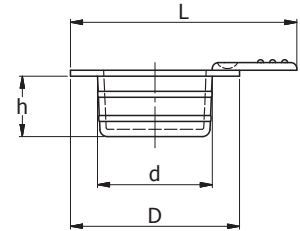
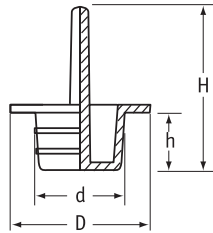
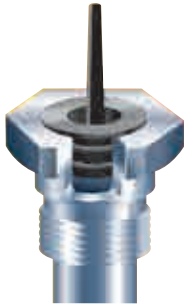


Moss Pull Plugs

SR 1067

Black Thermoplastic Elastomer

- Protect threaded or plain components
- Handy pull-tab for easy removal
- Acid-resistant
- Material temperature: -50°C to +95°C
- Ideal for hydraulic and general engineering applications



Type 1 – Central Pull Plugs

Part Number	Thread Size	Dimensions (mm)				Standard Pack Quantity
		d	D	h	H	
464905	M8	7.5	15.5	8.0	24.0	500
110043	M10	9.5	17.5	8.0	30.0	8000
110044	M12	11.5	19.5	8.0	30.0	7000
110045	M14	12.8	21.5	10.0	30.0	6000
110046	M16	15.2	23.5	10.0	32.0	4000
464906	M18	17.0	26.0	10.0	30.0	500
464907	M20	19.4	27.5	12.0	26.0	500
464908	M22	21.4	29.5	12.0	26.0	250
464909	M24	23.5	28.5	12.0	26.0	250

Type 2 – Lateral Pull Plugs

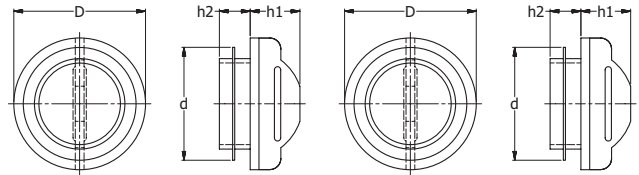
Part Number	Thread Size	Dimensions (mm)				Standard Pack Quantity
		d	D	h	H	
464857	M6	5.5	15.5	8.0	23.2	500
110291	M8	7.5	15.0	8.0	25.3	7000
110280	M10	9.5	17.0	8.0	27.3	7000
110281	M12	11.5	17.0	8.0	27.5	7000
110282	M14	13.0	21.0	10.0	31.0	6000
110283	M16	15.5	23.0	10.0	33.3	4000
110294	M18	17.0	26.0	10.0	35.5	4000
464858	M20	19.4	27.5	12.0	37.1	500
464859	M22	21.4	29.5	12.0	39.4	250
464860	M24	23.5	28.5	12.0	40.8	250

Snap-Fit Plugs

SR 1008

Red LDPE

- Single turn gives tight fit once pushed into position



Part Number	To Fit Thread Size			Dimensions (mm)				Standard Pack Quantity
	Metric	BSP/GAS	UNF/JIC	h	D	d1	h2	
10530	M10	1/8"	7/16"	9.8	-	6.0	4.0	12000
12363	M12, M13, M14	1/4"	1/2"	13.1	15.8	12.0	5.0	10000
12364	M16	3/8"	5/8"	16.5	19.5	14.0	5.0	10000
10314	M18	-	3/4"	18.3	21.5	11.5	7.0	7000
12365	M20	1/2"	-	21.3	22.7	12.0	7.0	5000
12366	M22	5/8"	7/8"	22.4	25.8	12.0	7.0	5000
12621	M24	-	-	23.5	28.2	12.0	7.0	3000
12367	M25, M26	3/4"	1 1/16"	25.5	29.9	12.0	7.0	2000
12368	M28	7/8"	1 1/8"	27.9	32.7	12.0	7.0	3000
12369	M32	1"	1 5/16"	32.0	35.6	12.0	7.0	2500
12622	M36	1 1/8"	1 1/2", 1 3/8"	35.7	39.7	12.0	7.0	2000
12598*	M40, M42	1 1/4"	1 5/8"	41.5	45.4	7.0	7.0	2000

*Pull-tab not as illustrated.