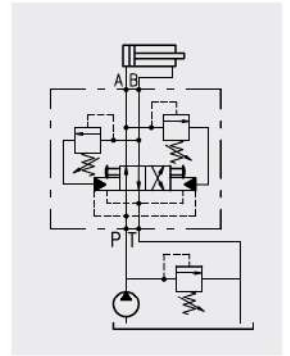


Operation

The oil flow is automatically reversed from P in A to P in B and vice versa when the setting value of the pilot pressure relief valves is reached.

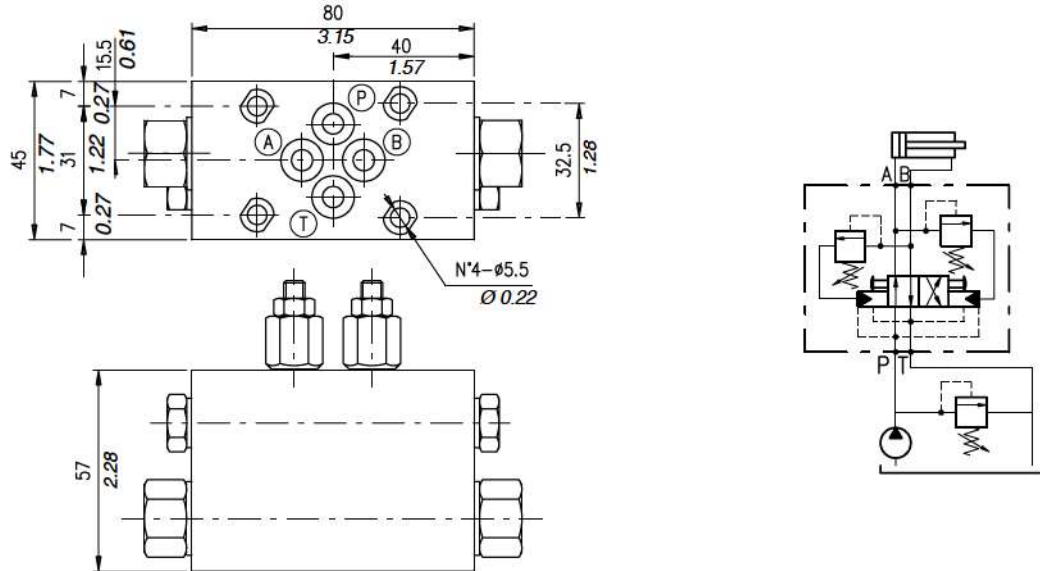


Performance

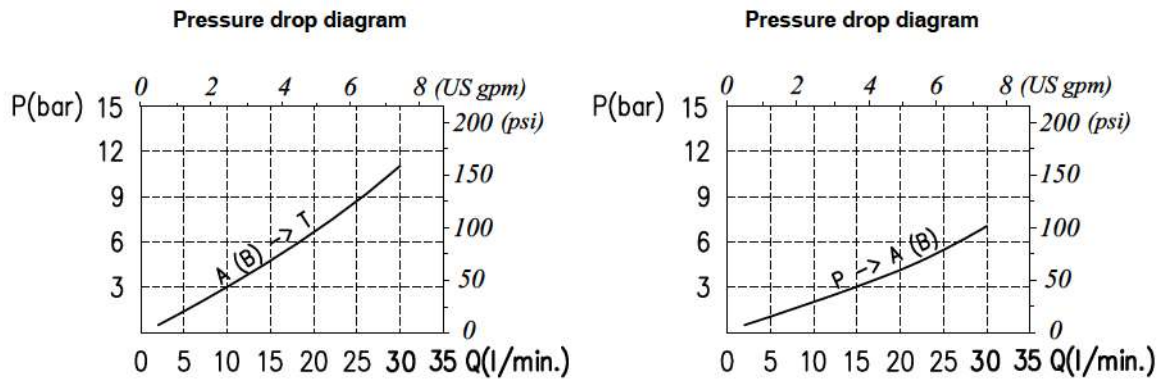
Body Valves

Type	Maximum flow		Minimum flow		Maximum pressure		Maximum reversing frequency	Application range with standard springs		Weight	
	l/min	US gpm	l/min	US gpm	bar	psi		bar	psi	kg	lb
VIA/AP 6-38	30	8	4	1.06	210	3050	30/	5÷100	72.5÷1450	1,40	3.09
VIA/AP 10-12	60	16						50÷200	725÷2900		

Dimensions and hydraulic circuit



Rating diagrams



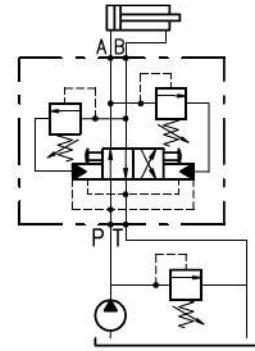
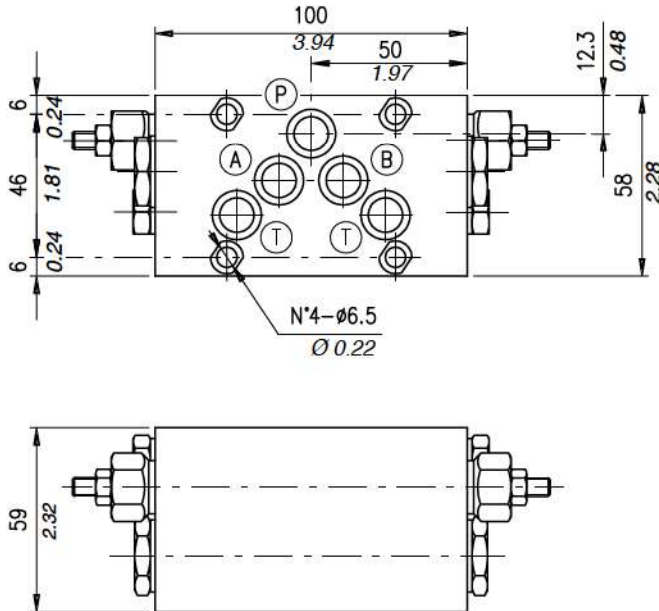
Order code

VIA /AP 6-38 /VMP 01 /□ . S /gh

Pressure settings

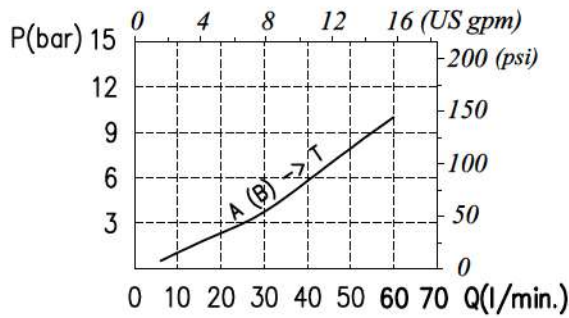
TV 5+100 bar (72.5÷1450 psi)
TS 50+200 bar (standard) (725÷2900 psi)

Dimensions and hydraulic circuit

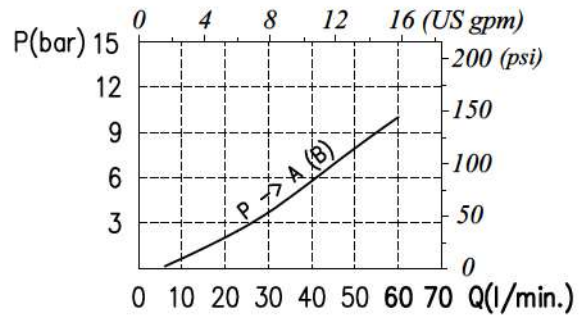


Rating diagrams

Pressure drop diagram



Pressure drop diagram



Order code

VIA /AP 10-12 /VMP 02 /□ . S /gh

Pressure settings

- TV) 5+100 bar (72.5÷1450 psi)
- TS) 50+220 bar (725÷2900 psi)