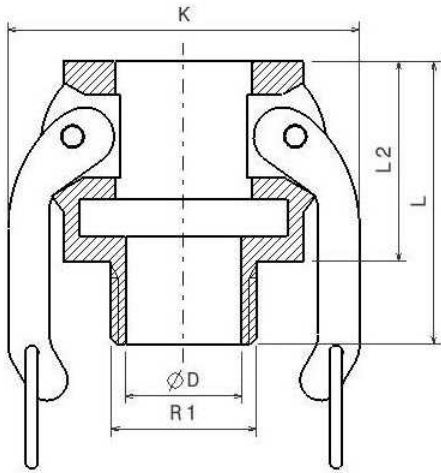


Autolock, female, BSP male threaded Type B

Stainless Steel AISI 316

1/1



AUTOLOCK
SYSTEM



Norms: Male thread according to EN10226-1
Female thread according to ISO 228-1
PN: 1/2 "- 4" 150 PSI ----- 5 "- 6" 75 PSI

Part nº	DN	R1	L	L2	ØC	ØD
ZB012S	12	1/2"	45	30	48	145
ZB020S	20	3/4"	52	32	54	19
ZB025S	25	1"	62	40	61	26
ZB032S	32	1"1/4	68	48	79	33
ZB040S	40	1"1/2	71	49	83	39
ZB050S	50	2"	78	54	94	50
ZB065S	65	2"1/2	85	59	109	61
ZB080S	80	3"	90	60	130	75
ZB100S	100	4"	101	62	158	98

The dimensions in micro-casting parts are approximated in those elements without mechanization.
NBR gasket