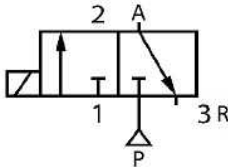


Maneuvering valves
Electrical actuating

Solenoid pneumatic valve 3/2 normally closed



Working pressure(Bar)	1.5 - 8.0
Guaranteed pressure(Bar)	12
Working temperature(°C)	-5 - 60
Max. acting frequency	4 cycles/s
Port size	In=Out=Exhaust=G1/8

Part n°	R1	Details
NEU100600	1/8" BSP	1/8"
NEU100603	1/8" BSP	1/4"
NEU100605	1/4" BSP	1/4"
NEU100608	3/8" BSP	3/8"
NEU100610	1/2" BSP	1/2"

*** Review attached PDF***
NEU100603 body type 1/4