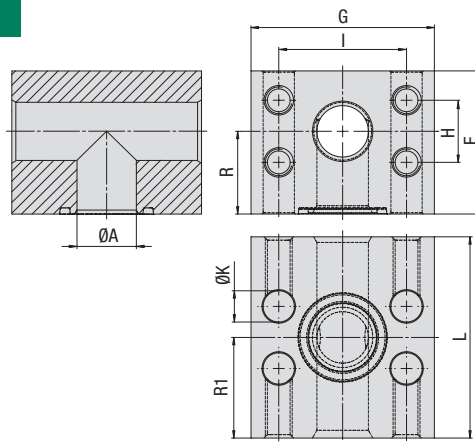


SAE Block T-Connection (Adaptor Style)
Type BF-T • 6000 PSI Series



6000 PSI High Pressure Series (based on ISO 6162-2:2012)

Nominal Size	DN	(in)	PN ¹ Bolts		Dimensions							Weight (kg/lbs) ca. per 100	Ø Thread Metric	Ordering Codes
			(bar/PSI)	(mm/in)	10.9	ØA	F	G	H	I	L			
19	3/4	420	19	55	72	23,8	50,8	72	32	36	11	176,0	M10	BF-T-602-W66
		6090	.75	2.17	2.83	.94	2.00	2.83	1.26	1.42	.43	387.20		
25	1	420	23	64	82	27,8	57,2	90	37	45	13,5	283,0	M12	BF-T-603-W66
		6090	.91	2.52	3.23	1.09	2.25	3.54	1.46	1.77	.53	622.60		
32	1-1/4	420	30	72	100	31,8	66,6	100	41	50	15,5	404,7	M14	BF-T-604-M14-W66
		6090	1.18	2.83	3.94	1.25	2.62	3.94	1.61	1.97	.61	890.34		
38	1-1/2	420	38	89	114	36,5	79,3	110	50	55	17,5	645,1	M16	BF-T-605-W66
		6090	1.50	3.50	4.49	1.44	3.12	4.33	1.97	2.17	.69	1419.22		
51	2	420	50	107	133	44,5	96,8	135	64	67,5	22	1027,5	M20	BF-T-606-W66
		6090	1.97	4.21	5.24	1.75	3.81	5.31	2.52	2.66	.87	2260.50		

Please see Page 89 for separate Bolt Sets and Sealings.

Materials / Ordering Options / Examples

- * SAE Flange Block made of Steel S355J2 / C45 or equivalent, zinc-plated and thick-film-passivated **BF-T...-W66**
- * SAE Flange Block made of Steel S355J2 / C45 or equivalent, blank (oiled) (on request) **BF-T...-W1**
- * SAE Flange Block made of Steel S355J2 / C45 or equivalent, zinc/nickel-plated (on request) **BF-T...-W3**
- * SAE Flange Block made of Stainless Steel V4A – 1.4404 (on request) **BF-T...-W5**
- * Size of Metric tapped holes deviating from the standard (e.g. M14) **BF-T...-M14-W66**

¹ The maximum working pressure PN (bar/PSI) applies only to the flange itself and depends on the bolts used (Grade 10.9).