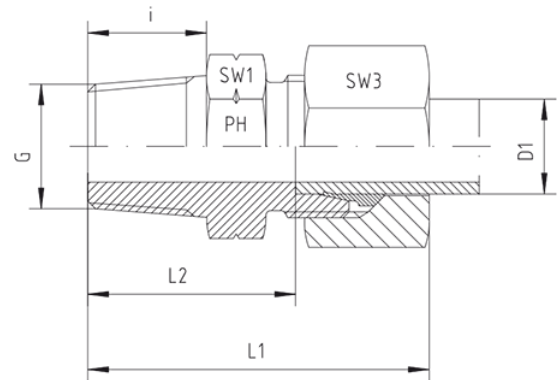
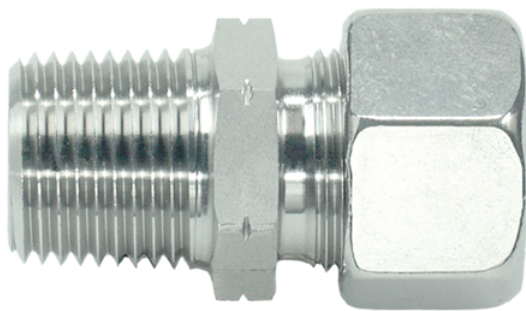


Rubrik 8.76

NPT - Standard



Male Stud Couplings
 LL- and L-Series
 Thread: NPT
 Other jump sizes on request!

Pressure	Tube O.D.	Thread	Approx. Dimensions					Order-Code
PN	D1	G	L1	L2	i	SW1	SW3	
Series LL								
100	4	1/8" NPT	28	18,5	10,0	11	10	GE-LL-04-1/8"-NPT
100	6	1/8" NPT	28	16,5	10,0	11	12	GE-LL-06-1/8"-NPT
100	8	1/8" NPT	30	18,5	10,0	12	14	GE-LL-08-1/8"-NPT
100	8	1/4" NPT	36	23,5	15,0	14	14	GE-LL-08-1/4"-NPT
Series L								
315	6	1/8" NPT	32	17,0	10,0	12	14	GE-L-06-1/8"-NPT
315	6	1/4" NPT	38	23,0	15,0	17	14	GE-L-06-1/4"-NPT
315	6	3/8" NPT	38	23,0	15,3	19	14	GE-L-06-3/8"-NPT
315	6	1/2" NPT	44	29,0	20,0	22	14	GE-L-06-1/2"-NPT
315	8	1/8" NPT	33	18,0	10,0	14	17	GE-L-08-1/8"-NPT
315	8	1/4" NPT	38	23,0	15,0	17	17	GE-L-08-1/4"-NPT
315	8	3/8" NPT	38	23,0	15,3	19	17	GE-L-08-3/8"-NPT
315	8	1/2" NPT	44	29,0	20,0	22	17	GE-L-08-1/2"-NPT
315	10	1/8" NPT	33	18,0	10,0	17	19	GE-L-10-1/8"-NPT
315	10	1/4" NPT	39	24,0	15,0	17	19	GE-L-10-1/4"-NPT

315	10	3/8" NPT	40	25,0	15,3	19	19	GE-L-10-3/8"-NPT
315	10	1/2" NPT	45	30,0	20,0	22	19	GE-L-10-1/2"-NPT
160	10	3/4" NPT	46	31,0	20,0	27	19	GE-L-10-3/4"-NPT
315	12	1/8" NPT	34	19,0	10,0	19	22	GE-L-12-1/8"-NPT
315	12	1/4" NPT	40	25,0	15,0	19	22	GE-L-12-1/4"-NPT
315	12	3/8" NPT	40	25,0	15,3	19	22	GE-L-12-3/8"-NPT
315	12	1/2" NPT	45	30,0	20,0	22	22	GE-L-12-1/2"-NPT
160	12	3/4" NPT	48	31,0	20,0	27	22	GE-L-12-3/4"-NPT
315	15	1/4" NPT	45	26,0	15,0	24	27	GE-L-15-1/4"-NPT
315	15	3/8" NPT	41	26,0	15,3	24	27	GE-L-15-3/8"-NPT
315	15	1/2" NPT	46	31,0	20,0	24	27	GE-L-15-1/2"-NPT
160	15	3/4" NPT	47	32,0	20,0	27	27	GE-L-15-3/4"-NPT
160	18	1/4" NPT	-	26,5	15	27	32	GE-L-18-1/4"-NPT
315	18	3/8" NPT	43	26,5	15,3	27	32	GE-L-18-3/8"-NPT
315	18	1/2" NPT	48	31,5	20,0	27	32	GE-L-18-1/2"-NPT
160	18	3/4" NPT	48	31,5	20,0	27	32	GE-L-18-3/4"-NPT
160	18	1" NPT	54	37,5	25,0	36	32	GE-L-18-1"-NPT
160	22	3/8" NPT	45	28,5	15,3	32	36	GE-L-22-3/8"-NPT
160	22	1/2" NPT	50	33,5	20,0	32	36	GE-L-22-1/2"-NPT
160	22	3/4" NPT	50	33,5	20,0	32	36	GE-L-22-3/4"-NPT
160	22	1" NPT	56	39,5	25,0	36	36	GE-L-22-1"-NPT
160	22	1 1/4" NPT	68	46,5	25,5	46	36	GE-L-22-1 1/4"-NPT
160	28	1/2" NPT	56	35,0	20,0	41	41	GE-L-28-1/2"-NPT
160	28	3/4" NPT	51	34,5	20,0	41	41	GE-L-28-3/4"-NPT
160	28	1" NPT	56	39,5	25,0	41	41	GE-L-28-1"-NPT
160	28	1 1/4" NPT	57	41,5	25,5	46	41	GE-L-28-1 1/4"-NPT
160	35	3/4" NPT	51	35,5	20,0	46	50	GE-L-35-3/4"-NPT
160	35	1" NPT	61	39,5	25,0	46	50	GE-L-35-1"-NPT
160	35	1 1/4" NPT	62	40,5	25,5	46	50	GE-L-35-1 1/4"-NPT
160	35	1 1/2" NPT	69	42,5	26,0	55	50	GE-L-35-1 1/2"-NPT
160	42	1" NPT	67	40,5	25,0	55	60	GE-L-42-1"-NPT
160	42	1 1/4" NPT	65	42,0	25,5	55	60	GE-L-42-1 1/4"-NPT
160	42	1 1/2" NPT	65	42,0	26,0	55	60	GE-L-42-1 1/2"-NPT