

## Tank Top Spin-On Filter Heads ■ SSFT-20B

### Dimensions



### Technical Data

#### Construction

- Tank Top Spin-On filter head

#### Material

- Aluminium

#### Port Connections

- BSP

#### Flow Rate

- 200 l/min / 53 US GPM

#### Operating Pressure

- Max. 7 bar / 100 PSI

#### Temperature Range

- -30 °C ... +100 °C / -22 °F ... +212 °F

#### Media Compatibility

- Mineral oils, other fluids on request

### Options and Accessories



#### Filter Elements

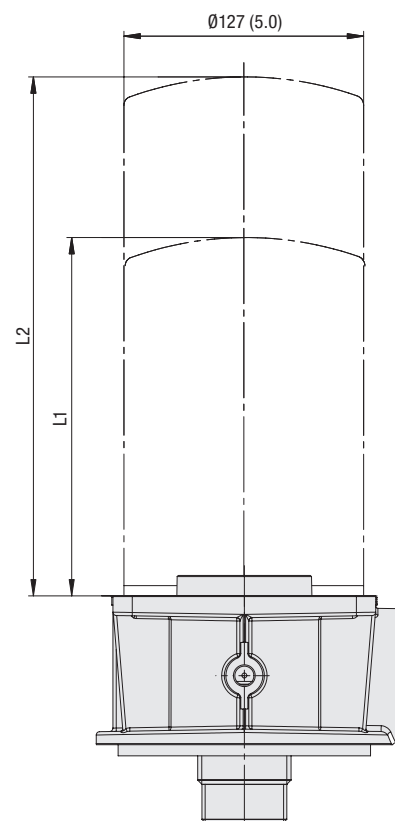
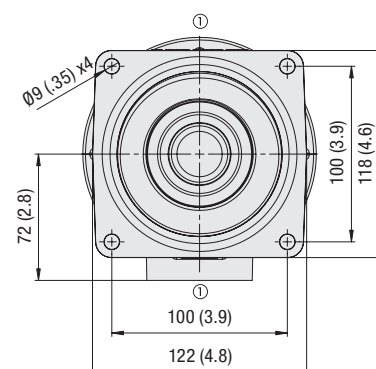
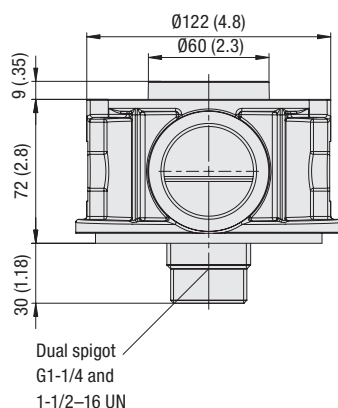
- For use with SFCT-57/58 series elements
- For element types with seal contour type A
- For element types and flow characteristics see page 174
- The element is not part of the scope of delivery

#### Valve

- Bypass valve 1,7 bar / 25 PSI integrated in the filter element

#### Clogging Indicators

- For clogging indicator types see page 177



Clearance for element removal: 20 / .8

Clogging Indicator Ports: G1/8  
Pos. 1 for Return-Line application

#### Element length L

L1 SFCT-57	177
	6.97
L2 SFCT-58	226
	8.90

Dimensions in mm / in

### Order Code

**SSFT - 20B - 1**

①      ②      ③

#### ① Type

Spin-On Filter Head **SSFT**

#### ② Connection Style

Connection	Thread	Code
BSP	1-1/2	<b>20B</b>

#### ③ Clogging Indicator Port Options

Clogging indicator port drilled for Return-Line application	<b>1</b>
Special	<b>9</b>

Note: Standard clogging indicator port is G1/8.

