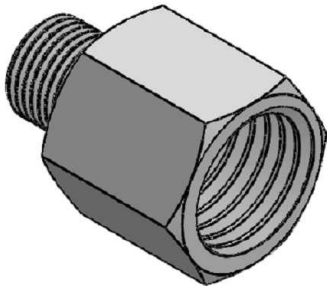
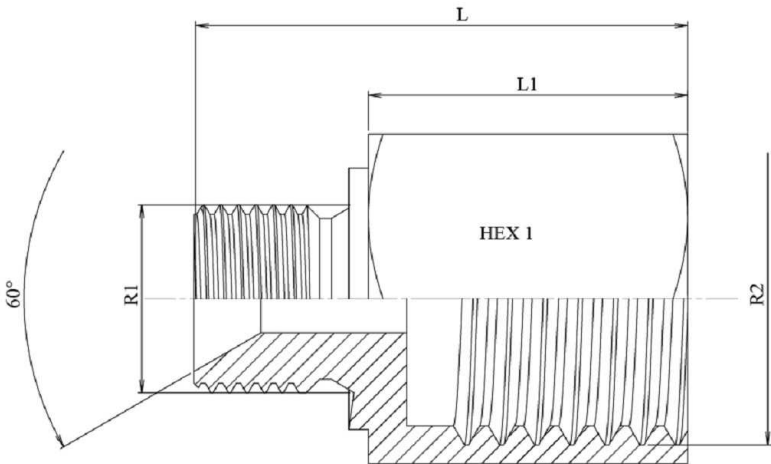


Reducer adaptor male BSP 60° - fixed female BSP

Stainless Steel AISI 316-L

1/1



Part nº	R1	R2	L	L1	HEX 1	ØC
Z10600204	1/8" BSP	1/4" BSP	30	21	19	3,5
Z10600206	1/8" BSP	3/8" BSP	26	17	22	3,5
Z10600402	1/4" BSP	1/8" BSP	31	18	17	6
Z10600406	1/4" BSP	3/8" BSP	31	18	22	6
Z10600408	1/4" BSP	1/2" BSP	38	25	27	6
Z10600604	3/8" BSP	1/4" BSP	35	21	22	8
Z10600608	3/8" BSP	1/2" BSP	39	25	27	8
Z10600804	1/2" BSP	1/4" BSP	38,5	21	27	11
Z10600806	1/2" BSP	3/8" BSP	39,5	22	27	11
Z10600812	1/2" BSP	3/4" BSP	44	26,5	32	11
Z10600816	1/2" BSP	1" BSP	45,5	28,5	41	11
Z10601206	3/4" BSP	3/8" BSP	35,5	17	32	15
Z10601208	3/4" BSP	1/2" BSP	40,5	22	32	16
Z10601216	3/4" BSP	1" BSP	47	28,5	41	16
Z10601612	1" BSP	3/4" BSP	48	26,5	41	22
Z10601620	1" BSP	1"1/4 BSP	53,5	32	50	22
Z10601624	1" BSP	1"1/2 BSP	59,5	40	55	22,2
Z10602016	1"1/4 BSP	1" BSP	53,5	28,5	50	30
Z10602420	1"1/2 BSP	1"1/4 BSP	59	32	55	33
Z10602432	1"1/2 BSP	2" BSP	68	40	70	33
Z10603224	2" BSP	1"1/2 BSP	68	40	70	46