

## FLUSH-TYPE GREASE NIPPLES - DRIVE-IN VERSION

### APPLICATION AREA

By using grease nipples with drive-in shank, you effectively save the thread-cutting process in the borehole.

### VERSIONS

Drive-in nipples as standard version are with plain shank, made of steel, zinc-plated and passivated. Upon request, manufactures drive-in grease nipples in other versions, with respect to the following:

- dimension
- material
- shank length
- shank type (e. g. serrated ridge)
- shank diameter
- surface colour
- further surface treatment

### MOUNTING INSTRUCTIONS

The exact size of the core hole depends on the material and must be determined by mounting tests. The standard gauge for the installation bore diameter corresponds to the nominal width of the shank Ø.



### OPERATING INSTRUCTIONS

Since this type of grease nipple is only driven in, it may get loose by

- strong vibrations
- high back-pressure when greasing with automatic guns

Drive-in type grease nipples, flush-type, should only be lubricated by a pointed nozzle.

### RECOMMENDATION

Drive-in type grease nipples are only suitable for low pressures. Please check whether they can be replaced by self-forming nipples for a better fit.

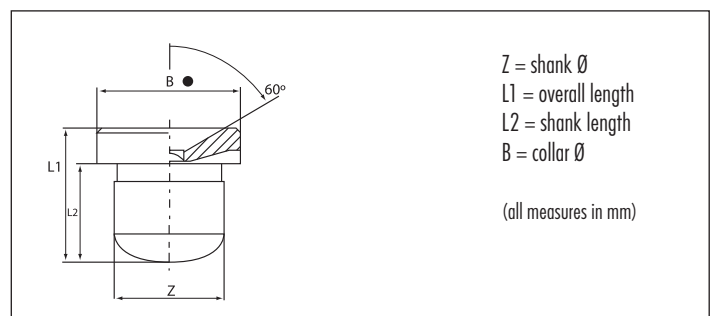


## Type D1a

### Flush-Type Grease Nipples - Drive-in Version



- according to DIN 3405
- straight version A/180°
- drive-in-type with plain shank
- standard versions according to DIN are made of steel, zinc-plated and passivated
- for other types and materials, please see table, or upon request



Z	5mm Ø	Ref.- No.:				
L1	L2	B	Steel	Brass	SST303	SST316L
7.5	5.5	8	●		3100185	

Z	6mm Ø	Ref.- No.:				
L1	L2	B	Steel	Brass	SST303	SST316L
7.5	5.5	8	●		3100186	3110186 3120186

Z	6.35mm, 1/4" Ø	Ref.- No.:				
L1	L2	B	Steel	Brass	SST303	SST316L
7.5	5.5	8	●		3100187	

Z	8mm Ø	Ref.- No.:				
L1	L2	B	Steel	Brass	SST303	SST316L
9.5	6.5	10	●		3100288	3110288 3120288

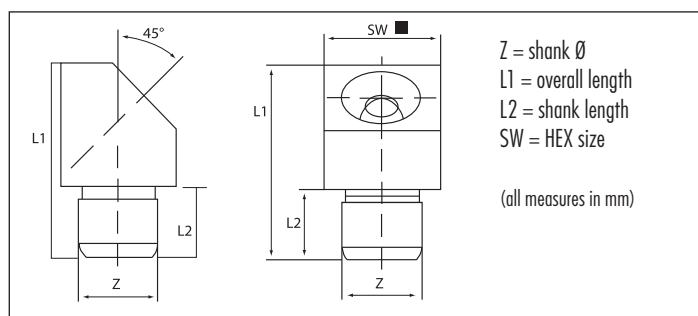
Z	10mm Ø	Ref.- No.:				
L1	L2	B	Steel	Brass	SST303	SST316L
9.5	6.5	12	●		3100389	3110389

## Type D2a



### Flush-Type Grease Nipples - Drive-in Version

- according to DIN 3405
- angled version B/45°
- drive-in-type with plain shank
- standard versions according to DIN are made of steel, zinc-plated and passivated



Z	6mm Ø	Ref.- No.:							
L1	L2	W	SW	Steel	Brass	SST303	SST316L		
15	5.5	45°	9mm SQ. ■	3204586					

Z	10mm Ø	Ref.- No.:							
L1	L2	W	SW	Steel	Brass	SST303	SST316L		
15	5.5	45°	11mm SQ. ■	3204789					

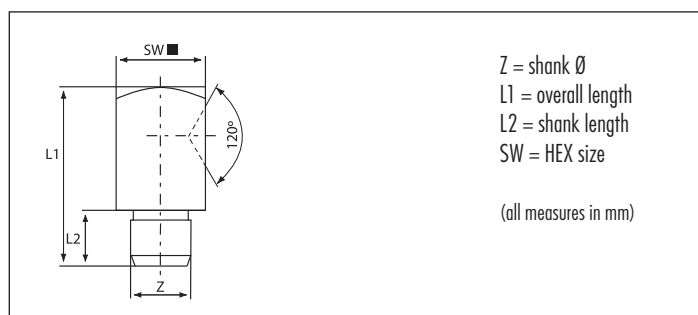
Z	8mm Ø	Ref.- No.:							
L1	L2	W	SW	Steel	Brass	SST303	SST316L		
15	5.5	45°	9mm SQ. ■	3204588					

## Type D3a



### Flush-Type Grease Nipples - Drive-in Version

- according to DIN 3405
- angled version C/90°
- drive-in-type with plain shank
- standard versions according to DIN are made of steel, zinc-plated and passivated



Z	6mm Ø	Ref.- No.:							
L1	L2	W	SW	Steel	Brass	SST303	SST316L		
18	5.5	90°	9mm SQ. ■	3304586					

Z	10mm Ø	Ref.- No.:							
L1	L2	W	SW	Steel	Brass	SST303	SST316L		
18	5.5	90°	11mm SQ. ■	3304789					

Z	8mm Ø	Ref.- No.:							
L1	L2	W	SW	Steel	Brass	SST303	SST316L		
18	5.5	90°	9mm SQ. ■	3304588					