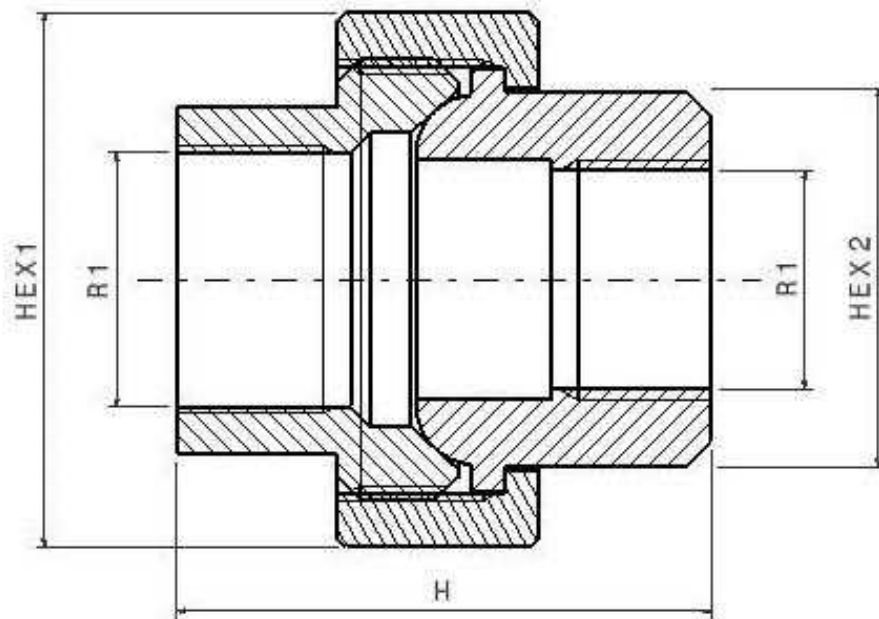


Female-female FIG.340

Stainless Steel AISI 316



Norms: Male thread according to EN10226-1
Female thread according to ISO 228-1

Face: 1/8" => 1" Octagonal; 1 1/4" => 4" Decagonal

PN: 1/8"-3/8": 20 Bar; 1/2" - 2": 17,6 Bar; 2 1/2"- 3": 14 Bar; 4" - 6": 7 Bar

Part n°	R1	HEX 1	HEX 2	H
ZFIG34002	1/8"	25	13	26,5
ZFIG34004	1/4"	30,5	17	32
ZFIG34006	3/8"	34	21	34
ZFIG34008	1/2"	37	25	38
ZFIG34012	3/4"	46	30	42,5
ZFIG34016	1"	52	37	46,5
ZFIG34020	1 1/4"	64,5	46	52
ZFIG34024	1 1/2"	70	52	53
ZFIG34032	2"	86	64	63
ZFIG34040	2 1/2"	105	80	73
ZFIG34048	3"	118,5	93	78,5
ZFIG34060	4"	147	117	87

The dimensions in micro-casting parts are approximated in those elements without mechanization.