

-20°C ÷ 140°C



Working pressure:
69 Bar



Compressed air and fluids
suitable with construction
materials



- Taper gas BSPT ISO 7-1
from R1/8" to R1"
- Parallel gas BSPP ISO 228-1
from G1/8" to G1"

LEVER ROTATION

90° rotation of the lever

Body: Stainless steel CF8M
Locking nut: Stainless steel AISI 316
Ball: Stainless steel AISI 316
Stem (anti blow-out): Stainless steel
AISI 316
Ball seal: PTFE
O-ring: NBR
Lever: Aluminium
Screw: Stainless steel AISI 304



Food contact materials
EC 1935/2004



D.M. 174/2004

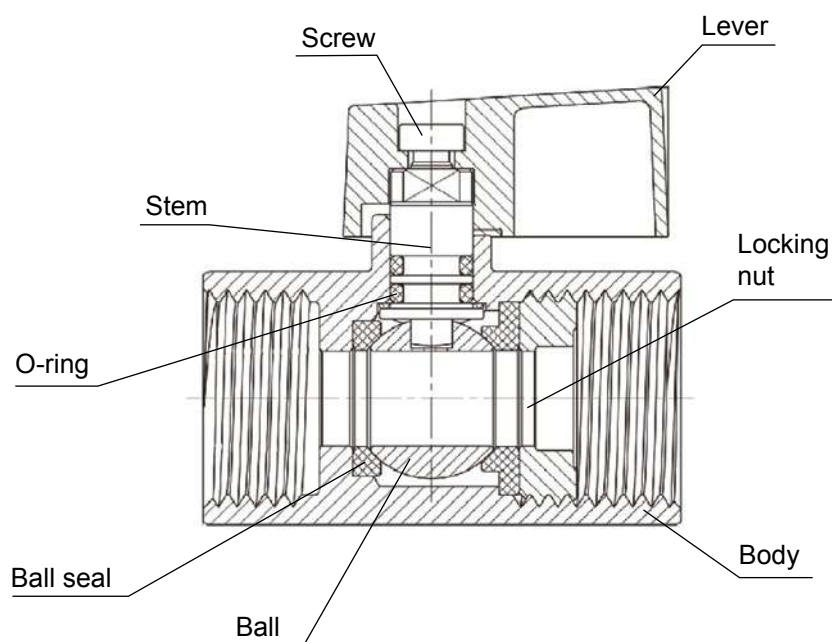


Products in compliance with
EC Regulation 1907/2006



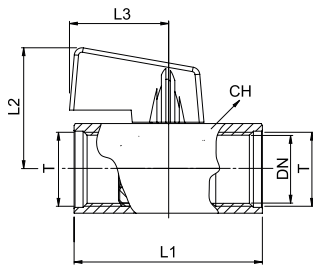
Products in compliance with
the directive EU 2015/863

CONSTRUCTION DETAILS



9170

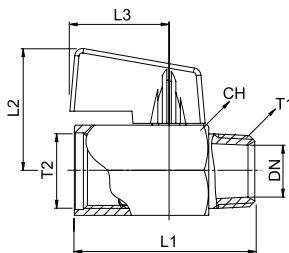
Female mini ball valve BSPP thread



CODE	T	DN	L1	L2	L3	CH
9170TR18	G 1/8"	5	39,0	26,5	23,0	21
9170TR14	G 1/4"	7	42,0	26,5	23,0	21
9170TR38	G 3/8"	7	42,0	26,5	23,0	21
9170TR12	G 1/2"	9,2	46,0	29,0	23,0	24,5
9170TR34	G 3/4"	12,5	54,0	32,0	23,0	31
9170TR1	G 1"	15	64,5	35,0	23,0	36

9180

Mini ball valve, male BSPT and female BSPP threads



CODE	T1	T2	DN	L1	L2	L3	CH
9180TR18	R 1/8"	G 1/8"	5	39,0	26,5	23,0	21
9180TR14	R 1/4"	G 1/4"	7	40,0	26,5	23,0	21
9180TR38	R 3/8"	G 3/8"	7	40,0	26,5	23,0	21
9180TR12	R 1/2"	G 1/2"	9,2	46,0	29,0	23,0	24,5
9180TR34	R 3/4"	G 3/4"	12,5	54,0	32,0	23,0	31
9180TR1	R 1"	G 1"	15	64,5	35,0	23,0	36

