

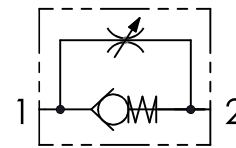


Tenuta a sfera solo per VURF 140/380/120  
Ball sealing only for VURF 140/380/120

Codice ordinazione Ordering code	01	02
	<b>VURF</b>	

<b>01</b>	Valvole di controllo flusso unidirezionali (Unidirectional flow control valves)	<b>VURF</b>	
<b>02</b>	Dimensione (Size)	BSPP 1/8	<b>180</b>
		BSPP 1/4	<b>140</b>
		BSPP 3/8	<b>380</b>
		BSPP 1/2	<b>120</b>
		BSPP 3/4	<b>340</b>
		BSPP 1	<b>100</b>
		BSPP 1-1/4	<b>114</b>

### Schema idraulico - Hydraulic circuit



### Dati tecnici - Technical data

<b>Olio idraulico/Mineral oil</b>	ISO 6743/4 (DIN 51524)		
<b>Viscosità olio/Oil viscosity</b>	15-250 mm <sup>2</sup> /s (15 to 250 cSt)		
<b>Classe di contaminazione max con filtro</b> Max contamination index with filter	ISO 4406:1999 Classe 19/17/14		
<b>Temperatura dell'olio/Oil temperature</b>	-20°C +80°C	-4°F + 176°F	
<b>Temperatura ambiente/Ambient temperature</b>	-20°C +50°C	-4°F + 122°F	
<b>È indispensabile l'utilizzo di un filtro per proteggere la valvola (filtrazione consigliata 15 µm)</b> It is necessary a filter use to protect the valve (advised filtration 15 µm)			

### Caratteristiche tecniche - Technical characteristics

Tipo Type	A	Portata max Max flow l/min-USgpm	Pressione max Max pressure bar/PSI	B	L	Peso approssimativo Approx weight kg/lb
<b>VURF180</b>	<b>BSPP 1/8</b>	<b>5 (1,3)</b>	<b>350 (5075)</b>	<b>25 (0.98)</b>	<b>48 (1.89)</b>	<b>0,12 (0.26)</b>
<b>VURF140</b>	<b>BSPP 1/4</b>	<b>15 (4)</b>		<b>34 (1.34)</b>	<b>62 (2.44)</b>	<b>0,28 (0.6)</b>
<b>VURF380</b>	<b>BSPP 3/8</b>	<b>30 (7.9)</b>		<b>39 (1.54)</b>	<b>73 (2.87)</b>	<b>0,46 (1.01)</b>
<b>VURF120</b>	<b>BSPP 1/2</b>	<b>45 (11.9)</b>		<b>44 (1.73)</b>	<b>83 (3.27)</b>	<b>0,66 (1.45)</b>
<b>VURF340</b>	<b>BSPP 3/4</b>	<b>85 (22.4)</b>	<b>300 (4350)</b>	<b>54 (2.13)</b>	<b>102 (4.02)</b>	<b>1,10 (2.42)</b>
<b>VURF100</b>	<b>BSPP 1</b>	<b>150 (39.6)</b>	<b>250 (3625)</b>	<b>65 (2.56)</b>	<b>124,5 (4.90)</b>	<b>1,9 (4.20)</b>
<b>VURF114</b>	<b>BSPP 1-1/4</b>	<b>200 (52.8)</b>		<b>75 (2.95)</b>	<b>144 (5.67)</b>	<b>2,95 (6.32)</b>

### Performances

