

# 4DCPV

Applications

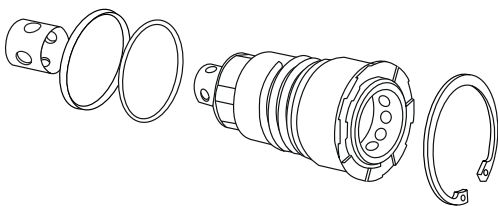


**Custom-made casting solutions for agriculture with integrated cartridges.**

The cast iron block is equipped with two integrated 1/2" cartridges, in accordance to ISO 7241 part A standard. Push-Pull connection type. Connection and disconnection under pressure allowed, thanks to the lever, specifically designed to ensure depressurization of the internal circuit. The block is designed to be screwed directly on control blocks. Every single casting is specifically developed for each tractor manufacturer, to meet impeding space requirements. Faster casting solutions are specifically designed to match the different control blocks interfaces available on the market. The lever can be mounted in different position, to meet space requirements.



Cartridges can be easily replaced. Easy to assemble and disassemble without special tools. Each kit contains rear seals and a smalley ring to retain the cartridge into the casting housing.



## Replacement cartridge

dash	Size		Part number	
	mm	inch		
08	12.5	1/2"	KIT4BM 4DCPVDS3	For castings with lever on top
08	12.5	1/2"	KIT4BM 4DCPVES3	For castings with lever on the side

## Technical Specifications

Material	Cast Iron; Steel
Seals	HNBR; PUR
Working temperatures	- 25 °C to + 125 °C
Surface treatment	MATE 500 (CrIII)
Series Interchange	ISO 7241 part A

Valve Type	Poppet
Connection	Push to Connect or Lever
Disconnection	Lever
Connection Under Pressure	Allowed

