

GREASE LUBRICATION PUMPS

CARTRIDGE PUMP ZEPTO



TECHNICAL DATA

ELECTRICAL MOTOR

Drive: DC motor
Operational voltage: 12 and 24 V DC
Current consumption: max. 5A (inclusive reverse polarity protection)
Connection type for power supply: Deutsch plug, 4-poles
Fuse (not included in device): 3A
Degree of protection: IP6K9K (ISO 20653)

PUMP ELEMENT

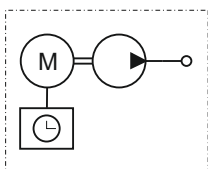
Delivery pressure with pressure limiting valve (PLV) set to: 4200 psi (290 bar)

GENERAL

Pressure connection: Ø 6mm
Operating pressure: max. 290 bar (4200 psi)
Temperature range*: -25 up to +70°C (-13 to +158°F), depending on lubricant
Lubricant: greases from NLGI classes 000 up to 2*
Compatible cartridge types: different types of cartridges: Type S („Lube-Shuttle®“ ***), Type L („Ritter grease cartridge 400 ml“ **), Type F („System Reiner“ **/****), Standard: DELIVERY WITH CARTRIDGE ADAPTER Type S, WITHOUT CARTRIDGE
Delivery volume: constant 0.9 cm³/min
Weight: approx. 5.5 lbs (2.5 kg, without cartridge)
Level monitoring: with prewarning (signal output: display and Deutsch plug)
Material of housing: high-strength plastic
Corrosion degree of protection of steel: C4 corresponding to ISO 12944-2

KEY FEATURES

- The cartridge pump ZEPTO is mainly used on smaller machines and systems.
- The compact ZEPTO eccentric pump delivers lubricant via a desmodromic (force controlled) pump element and thus provides a reliable supply to the central lubrication system.
- Standard cartridges are used as a lubricant reservoir, which can be exchanged cleanly, quickly and easily.
- An innovative speed control ensures consistent delivery volume, regardless of the supply voltage.



CONTROL UNIT - 2 ORDER OPTIONS

Art. no. 10142862	Art. no. 10144013
<i>Functions (always time-dependent in delivery state; operational modes can be changed via key combinations)</i>	
- Operational mode of lubrication duration time-dependent	- Operational mode of lubrication duration time- or pulse-dependent
- Operational mode of cycle duration time-dependent	- Operational mode of cycle duration time-dependent
- Permanent operation (Voltage on → pump supplies lubricant)	- System pressure monitoring (via micro switch at PLV)
	- Permanent operation (Voltage on → pump supplies lubricant)
<i>Signal processing via:</i>	
Deutsch plug, 4-poles	Deutsch plug, 4-poles + bushing, M12x1, 4-poles

- * according to the ZEPTO approved lubricant list
 ** see accessories
 *** Lube-Shuttle® is a registered trade mark of MATO
 **** System Reiner is a registered trade mark of FUCHS LUBRITECH GmbH

issue: 10.19EN

GREASE LUBRICATION PUMPS

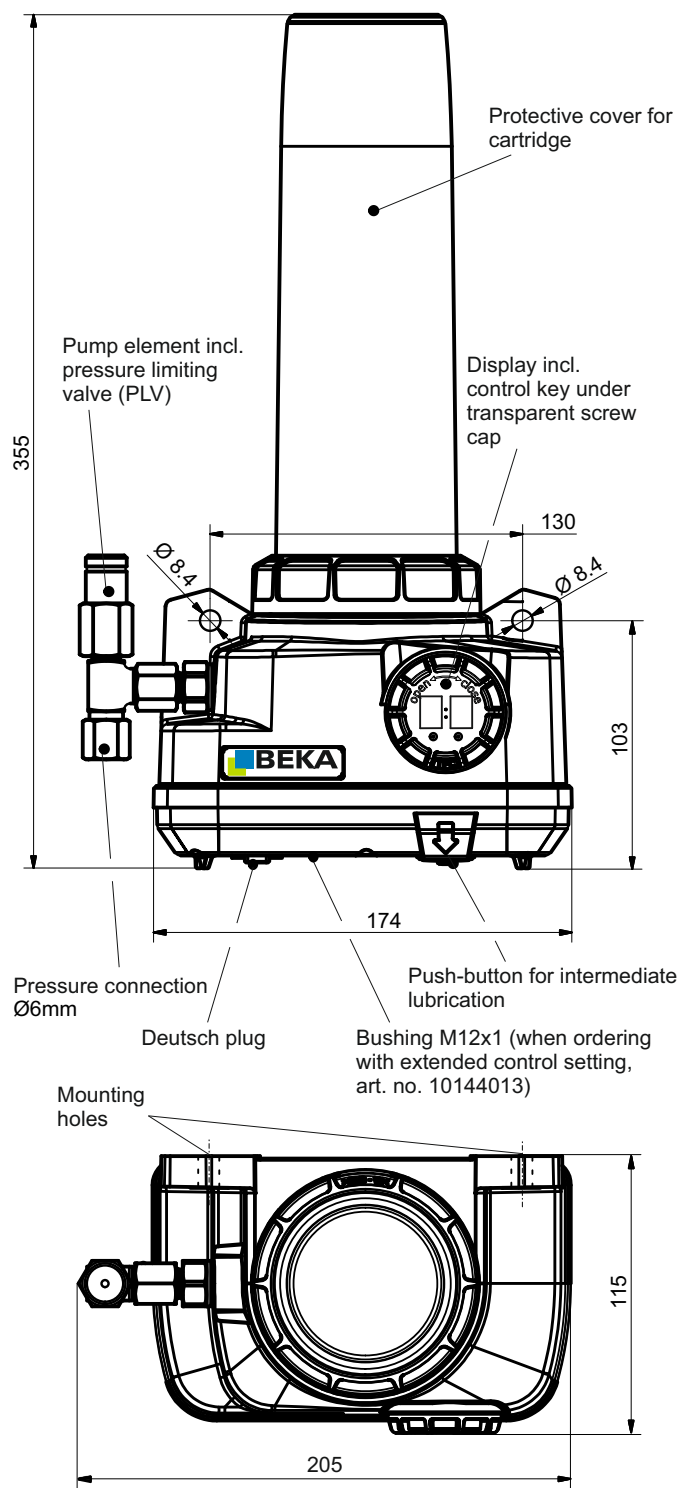
CARTRIDGE PUMP ZEPTO

SCOPE OF DELIVERY AND FUNCTIONS

ZEPTO with connection (adapter) for cartridge type S „Lube-Shuttle®“, **without cartridge**

Push-button for intermediate lubrication:	yes
Control via control key:	yes
External intermediate lubrication:	yes
External error signals:	yes

TECHNICAL DRAWINGS



issue: 10.19EN

1090200670