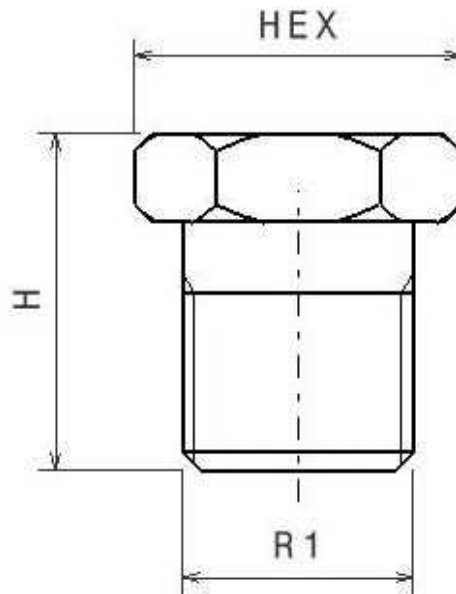


Hexagon male plug FIG.290

Stainless Steel AISI 316



Norms: Male thread according to EN10226-1
Female thread according to ISO 228-1

Face: 1/8" => 3/4" Hexagonal; 1" => 4" Octagonal

PN: 1/2" - 2": 17,6 Bar --- 2 1/2" - 3": 14 Bar --- 4" - 6": 7 Bar

Part nº	R1	HEX 1	H
ZFIG29002	1/8"	12	14
ZFIG29004	1/4"	15	17
ZFIG29006	3/8"	18	17,8
ZFIG29008	1/2"	22	20,9
ZFIG29012	3/4"	28	25
ZFIG29016	1"	36	26,7
ZFIG29020	1"1/4	43,6	30,5
ZFIG29024	1"1/2	50	30,6
ZFIG29032	2"	62	34,3
ZFIG29040	2"1/2	78	39
ZFIG29048	3"	92	42
ZFIG29060	4"	116	47

The dimensions in micro-casting parts are approximated in those elements without mechanization.