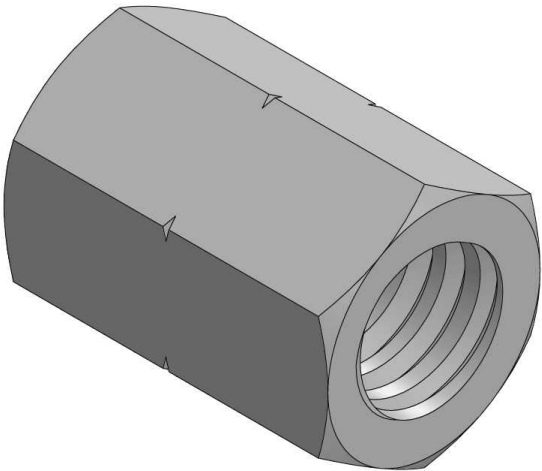
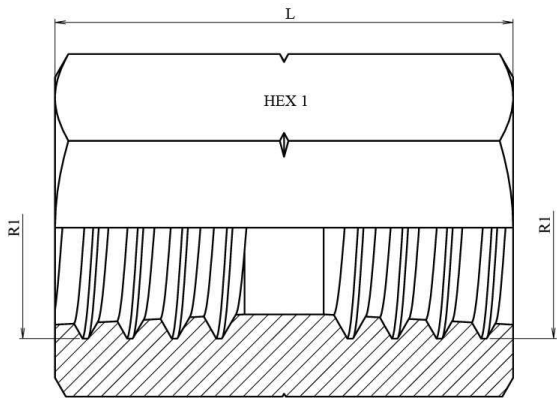


Stainless Steel AISI 316-L

1/1



Part nº	R1	R2	L	HEX 1	Working Pressure (bar)
<b>ZN10310202</b>	1/8" NPT	1/8" NPT	28	14	700
<b>ZN10310404</b>	1/4" NPT	1/4" NPT	29	19	700
<b>ZN10310606</b>	3/8" NPT	3/8" NPT	29	22	700
<b>ZN10310808</b>	1/2" NPT	1/2" NPT	38	30	500
<b>ZN10311212</b>	3/4" NPT	3/4" NPT	39	36	420
<b>ZN10311616</b>	1" NPT	1" NPT	48	41	350
<b>ZN10312020</b>	1" 1/4 NPT	1" 1/4 NPT	50	50	280