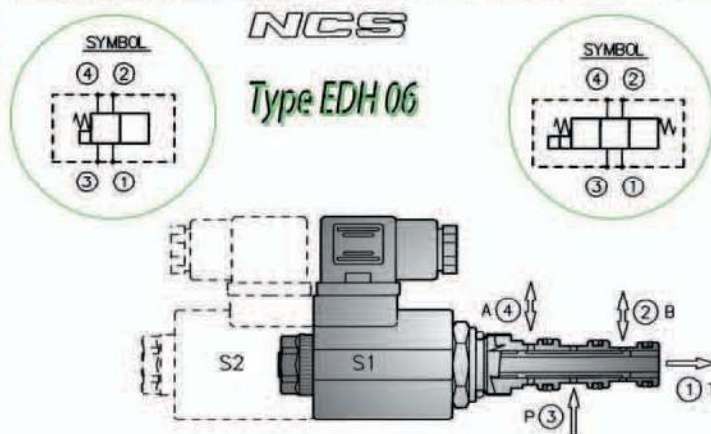


SOLENOID OPERATED DIRECTIONAL VALVES SPOOL TYPE - FOUR WAY - TWO/THREE POSITION

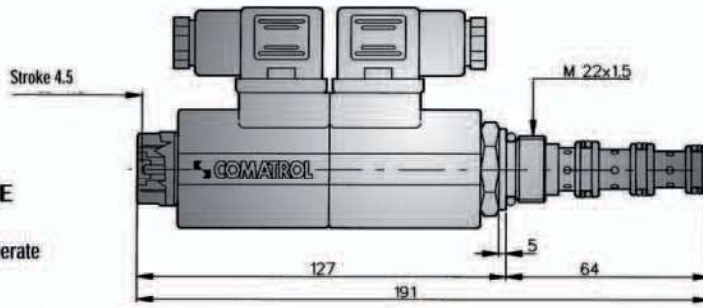
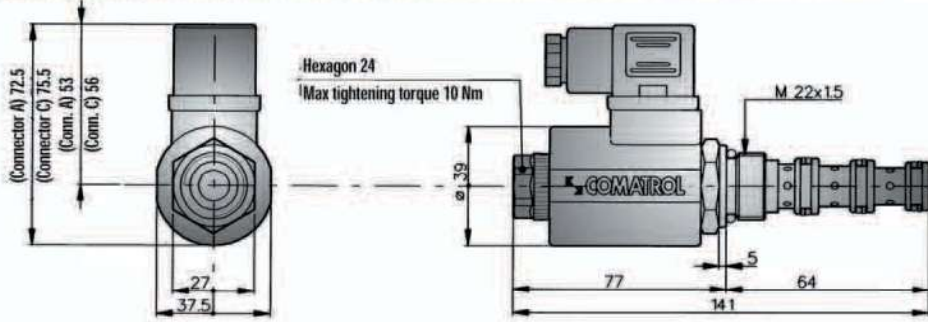


SIZE	06	
NOMINAL PORT SIZE	6	
MAX FLOW RATE	l/min	35
	US gpm	9.2
MAX PRESSURE THROUGH ② ③ ④	bar	315
	psi	4500
CAVITY NUMBER	00.95	064
NORMALIZED CAVITY	NCS	06/4
MAX TIGHTENING TORQUE	Nm 50	
WEIGHT INCLUDING COIL	1 SOLENOID	kg 0.450
	2 SOLENOID	kg 0.810
REF		
CAVITY DIMENSIONS	11.450	

VERSIONS

TYPE	HYDRAULIC SYMBOLS	FUNCTIONS OBTAINED WITH SOLENOID			OVERLAP	MAX. FLOW RATE l/min	MAX. PRESSURE bar
		De-energized	S1 Energized	S2 Energized			
42 05		③ → ② ④ → ①	③ → ④ ② → ①		+	35	315
42 06		④ → ② ③ → ①	③ → ④ ② → ①		+	35	315
42 07		④ ③ ② → ①	③ → ④ ② → ①		-	25	315
42 08		③ → ① ④ → ②	③ → ④ ② → ①		-	25	315
42 12		③ → ④ ② → ①	④ → ② ③ → ①		+	35	315
42 13		④ → ② ③ → ①	④ ② → ① ③ → ①		+	35	315
42 14		④ → ② ③ → ①	③ → ② ④ → ①		+	35	315
43 06		④ → ② ③ → ①	③ → ④ ② → ①	③ → ② ④ → ①	+	35	315
43 07		④ ③ ② → ①	③ → ④ ② → ①	③ → ② ④ → ①	-	25	315
43 08		③ → ① ④ → ②	③ → ④ ② → ①	③ → ② ④ → ①	-	25	315
43 09		④ ② → ① ③ → ①	③ → ④ ② → ①	③ → ② ④ → ①	+	35	315
43 10		④ ③ → ① ② → ①	③ → ④ ② → ①	③ → ② ④ → ①	-	20	315
43 13		④ → ② ③ → ①	④ ② → ① ③ → ①	③ → ② ④ → ①	+	35	315
43 15		③ ② → ① ④ → ①	③ → ④ ② → ①	③ → ② ④ → ①	-	20	315
43 17		③ → ④ ②	③ → ④ ② → ①	③ → ② ④ → ①	+	35	315
43 19		③ → ④ ② → ①	③ → ④ ② → ①	③ → ② ④ → ①	+	35	315
43 20		③ → ② ④ → ①	③ → ④ ② → ①	③ → ② ④ → ①	+	35	315

DIMENSIONS (mm)



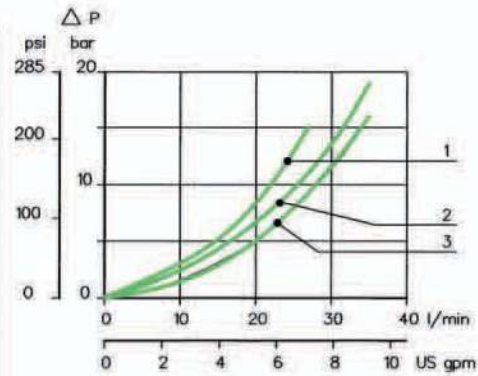
MANUAL OVERRIDE E
 For versions 43... only
 plunger type control pushed to operate

CHARACTERISTIC OPERATING CURVES

Measurements effected at 20°C ambient temperature with mineral oil having viscosity of 26 cSt at 50°C.
 Power input to coil: 90% of nominal value; temperature: 50°C. Cartridges only.

PRESSURE DROP

TYPE	③ → ①	③ → ②	③ → ④	② → ①	④ → ①
05		2	2	2	2
06		3	3	3	2
07	1	2	2	3	2
08	1	2	2	3	2
09		2	2	2	2
10	1	2	2	3	2
12			3	3	
13		3		3	2
14		3			2
15	1	2	2	2	2
17		3	3	3	2
19		3	3	3	2
20		3	3	3	3

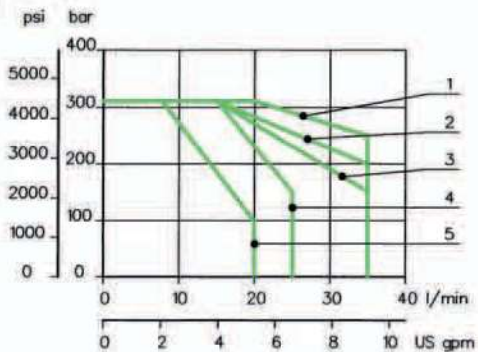


LIMITS OF APPLICATION

TYPE	Reference
05	3
06	1
07	4
08	4
09	2
10	5
12	2

LIMITS OF APPLICATION

TYPE	Reference
13	2
14	2
15	5
17	3
19	2
20	2



MAX PERMISSIBLE PRESSURE THROUGH PORT ① : 180 bar FOR TWO POSITION
 MAX PERMISSIBLE PRESSURE THROUGH PORT ① : 210 bar FOR THREE POSITION

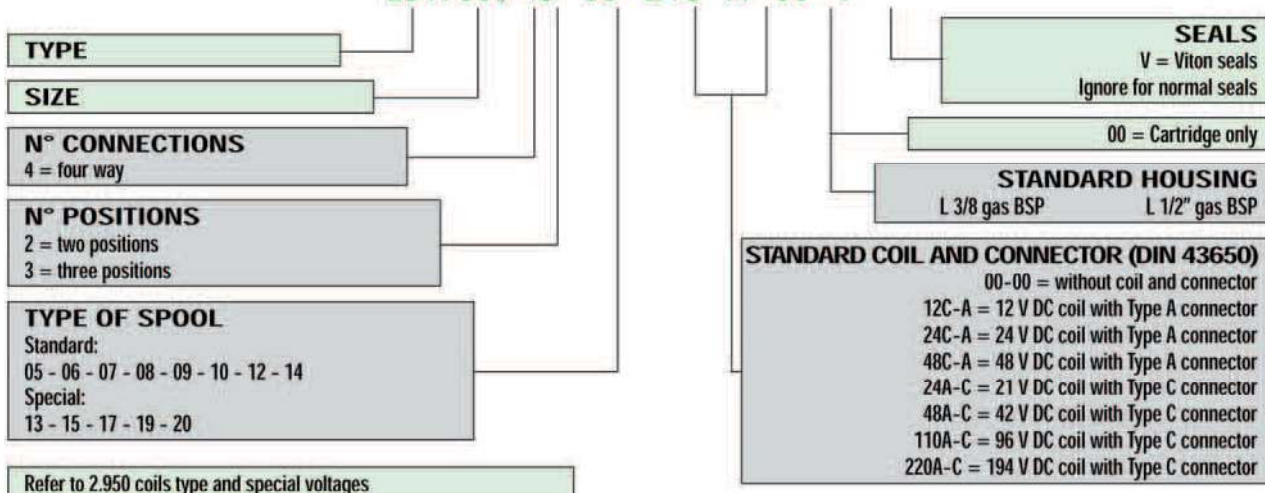
CHARACTERISTIC OPERATING CURVES

RESPONSE TIMES (m. sec)

TYPE	Energized	De-energized
06-13-14 09-19-20	25 - 50	40 - 80
05-07-08 12-10-15 17	30 - 50	40 - 80

EXAMPLE OF ORDER DESIGNATION EDH 06

EDH 06/43-08-24C-A-00-V



SPARE PARTS

Set of standard type external seals with back-up washers (Packs of minimum 10 sets)
 EDH 06/3 = 230.00.007.0