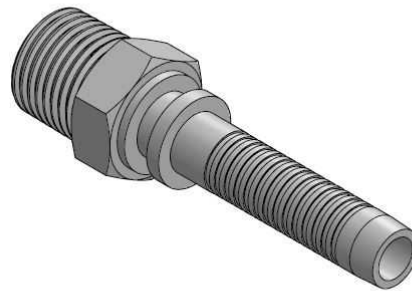
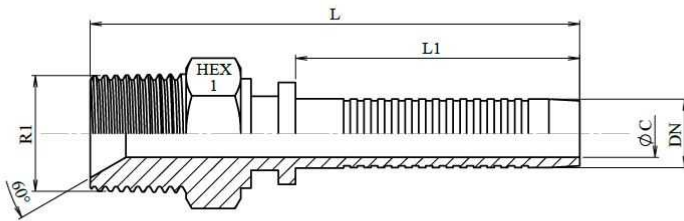


NPT Male thread

Mild Steel



Part n°	DN	R1	Working Pressure (bar)	L	L1	HEX 1	ØC
741610404	1/4"	1/4" NPT	700	61	34,5	17	4
741610604	1/4"	3/8" NPT	700	63,5	34,5	19	4
741610606	3/8"	3/8" NPT	700	71,5	41,5	19	7