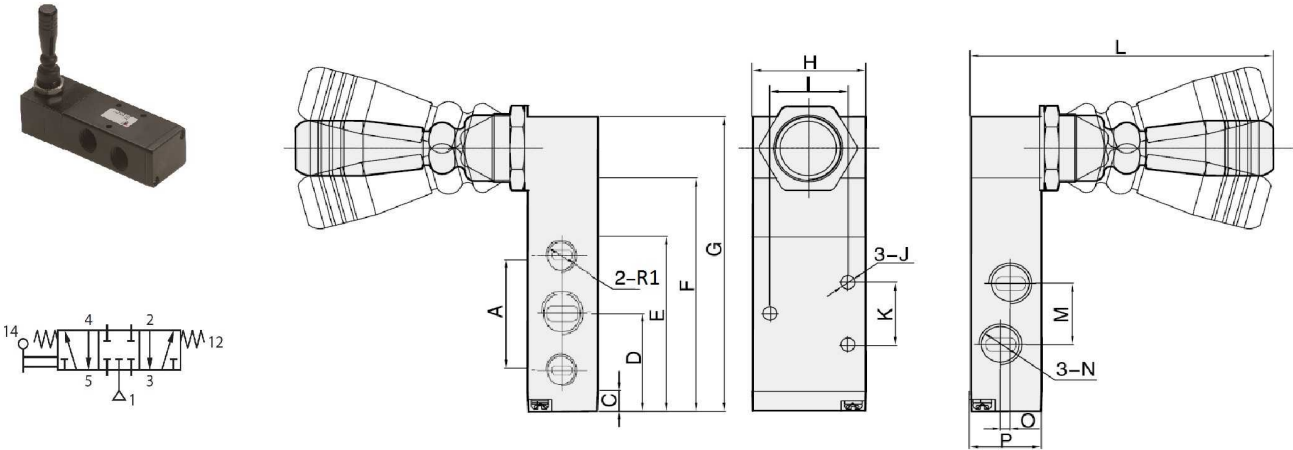


Control valves
Manual / Mechanical Actionning
**Manual pneumatic valve 5/3 closed center
monostable**



	A	C	D	E	F	G	H	I	J	K	L	M	N	O	P
NEU100535	28	6.5	28	49.5	64.5	84.5	27	19	Φ3.3	14	94.5	16	G1/8	3	18
NEU100540	36	6.5	31.5	56	75.5	97	35	24	Φ4.3	20	95.5	20	G1/4	3	22
NEU100545	44	7.5	40	72.5	91.5	113.5	40	28	Φ4.3	24	100	24	G3/8	4	27
NEU100548	63	7.5	54.5	101.5	124	152	50	36	Φ5.5	28.5	108	35	G1/2	4	34

Maximun working pressure: 12 Bar
Work pressure: 1.5-8 Bar

Part nº	R1
NEU100535	1/8" BSP
NEU100540	1/4" BSP
NEU100545	3/8" BSP
NEU100548	1/2" BSP