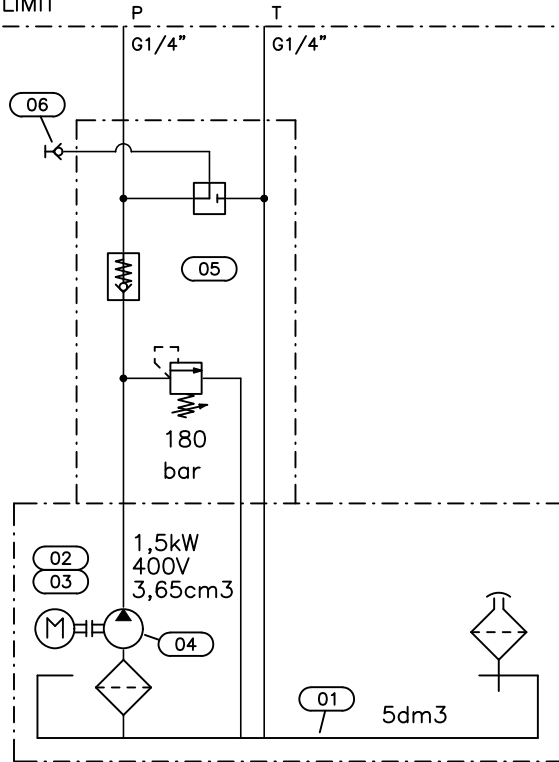
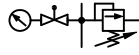


HYDRAULICS UNIT LIMIT



POS	QTY	COMPONENT DESCRIPTION	TYPE
01	1	RESERVOIR	SL45
02	1	ELECTRIC MOTOR	T3A90L-4 B34 (1,5kW 400V 1440r/min)
03	1	COUPLING	FA90
04	1	GEAR PUMP	PG08 (3,65cm ³)
05	1	CENTRAL MANIFOLD	A1A/180 + TM1
06	1	TAKE OFF POINT R1/4"	620.01.204.21

Customer		Project	
Hydraulics diagram A1A/180-PG08-SL45- FA90-1.5kW/400V/50Hz			Date 14.03.2024
Diag. n:o HTR4369-PU10			Work n:o
Attachments		Qty	Weight kg.

Hydra
Specma