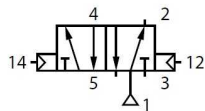


Control valves
Pneumatic actuating

Pneumatic control valve 5/2 bistable



Working pressure(Bar)	1.5 - 8.0
Guaranteed pressure(Bar)	12
Working temperature(°C)	-5 - 60



Part nº	R1	Type
NEU100020	1/8" BSP	5/2
NEU100025	1/4" BSP	5/2
NEU100030	3/8" BSP	5/2
NEU100035	1/2" BSP	5/2

*** Review attached PDF***