



Relief Valves Catalog

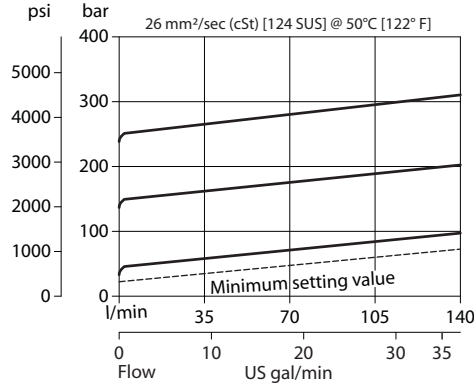
Differential Area VSB 12-EN

OPERATION

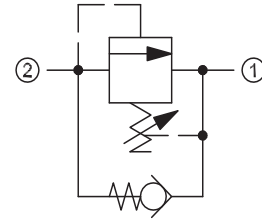
This is a direct-acting, differential area, poppet-type relief valve that relieves from 2 to 1 with an integral free-flow check from 1 to 2.

SPECIFICATIONS

Theoretical performance



Schematic

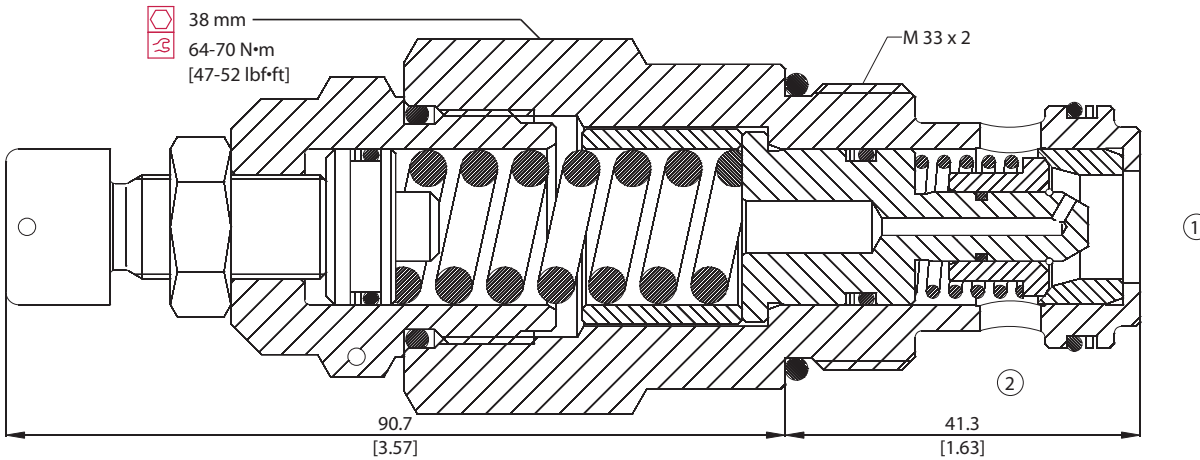


Specifications

Rated pressure	350 bar [5075 psi]
Rated flow	140 l/min [37 US gal/min]
Weight	0.60 kg [1.32 lb]
Cavity	NCS12/2

DIMENSIONS

Cross-sectional view



ORDERING INFORMATION

VSB 12-EN - 1 - 00 - V - XXX

Setting range 1 = 25 - 170 bar [363 - 2466 psi] 2 = 70 - 270 bar [1015 - 3916 psi] 3 = 105 - 350 bar [1523 - 5076 psi]	Seals V = Viton Omit = Buna-N	Seal Kit 230000470 230000120
	Housing and ports 00 = No Housing DG1/2 = AL, 1/2 BSP DG3/4 = AL, 3/4 BSP DG8S = AL, #8 SAE DG12S = AL, #12 SAE Other housings available	Housing P/N No Housing NCS12/2-DG-1/2 NCS12/2-DG-3/4 NCS12/2-DG-8S NCS12/2-DG-12S

RV - Relief Valves Catalog
VSB 12-EN