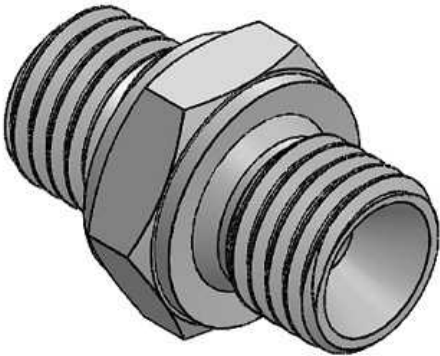
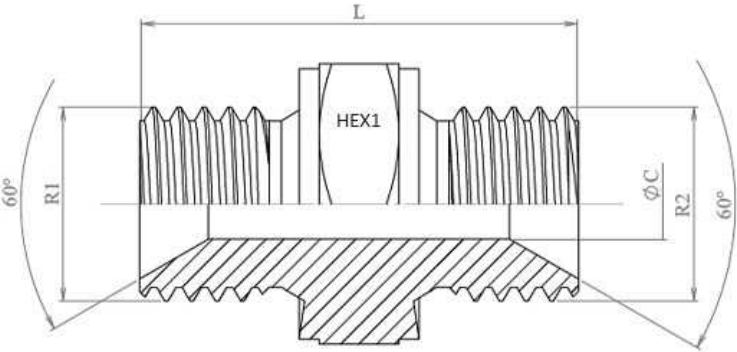


Adaptor BSP male-BSP male (60°)

Carbon steel

1/1



Part nº	R1	R2	L	HEX 1	ØC
A101002	1/8" BSP	1/8" BSP	22	14	3,5
A101004	1/4" BSP	1/4" BSP	31	17	4,7
A101004H19	1/4" BSP	1/4" BSP	31	19	6
A101006	3/8" BSP	3/8" BSP	35	22	8
A101008	1/2" BSP	1/2" BSP	40	27	11
A101010	5/8" BSP	5/8" BSP	45	30	14
A101012	3/4" BSP	3/4" BSP	45	32	16
A101016	1" BSP	1" BSP	53	41	22
A101020	1"1/4 BSP	1"1/4 BSP	56	50	28,5
A101024	1"1/2 BSP	1"1/2 BSP	65	55	33
A101032	2" BSP	2" BSP	69	70	46
A101040	2" 1/2 BSP	2" 1/2 BSP	72	85	55
A101048	3" BSP	3" BSP	90	100	64