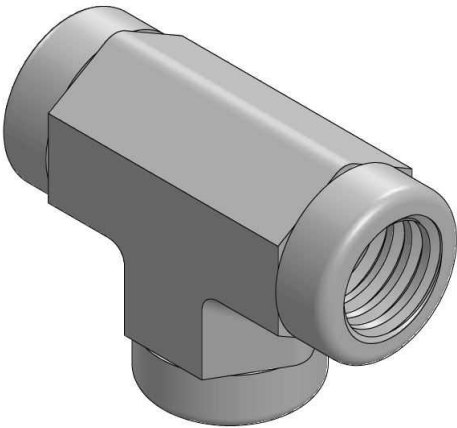
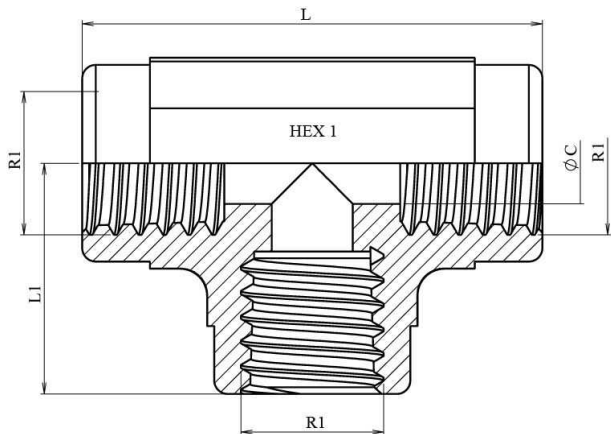


NPT fixed female tee

Carbon steel

1/1



Part nº	R1	L	L1	HEX 1	ØC
N122602	1/8" NPT	34	17	14	6
N122604	1/4" NPT	44	22	19	8
N122606	3/8" NPT	52	26	22	12
N122608	1/2" NPT	62	31	27	17,5
N122612	3/4" NPT	70	35	32	16
N122616	1" NPT	82	41	41	25
N122624	1" 1/2 NPT	106	53	65	45,5
N122632	2" NPT	121	61	72	59

The material can be provided with imperial hexagons