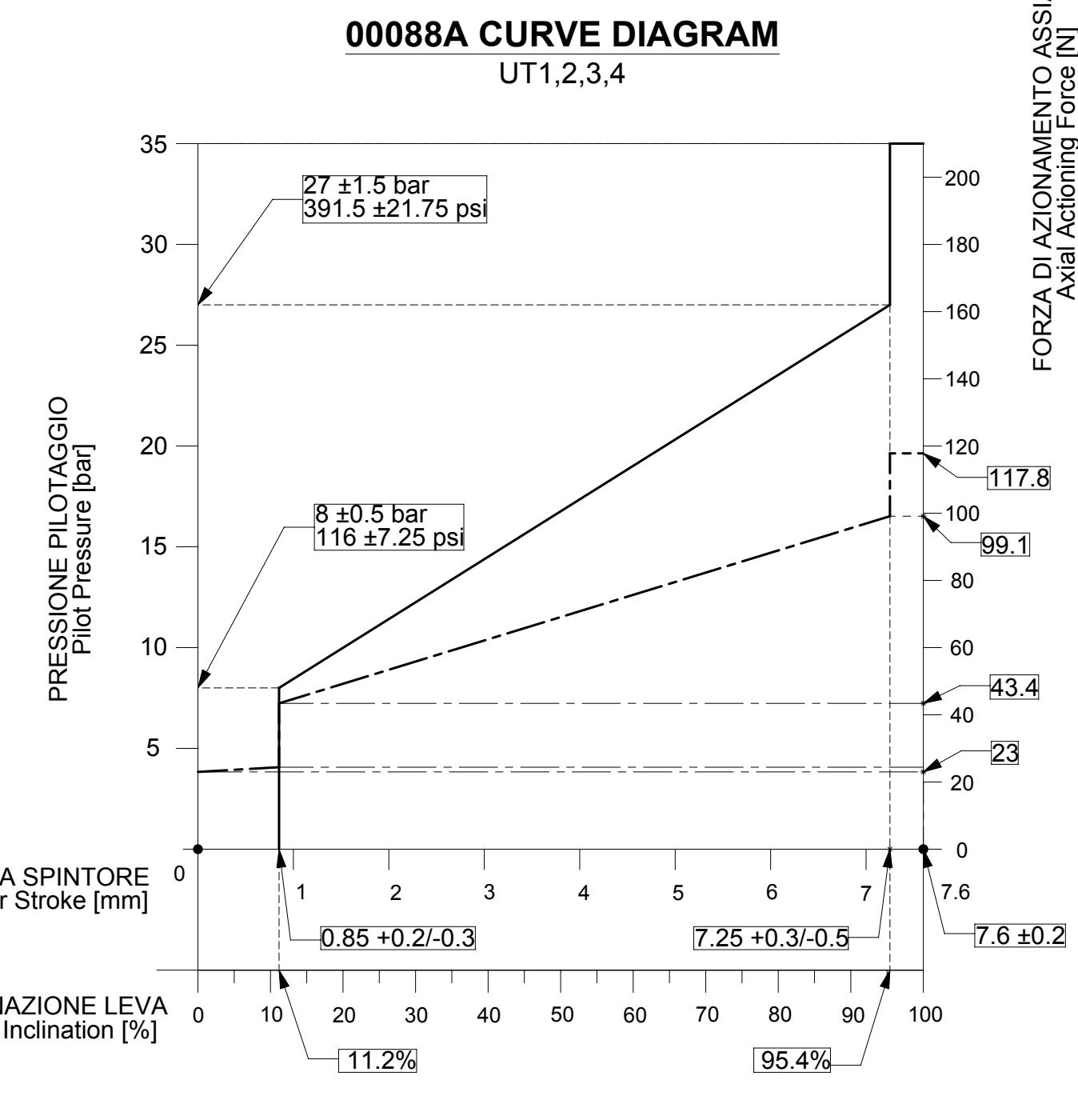
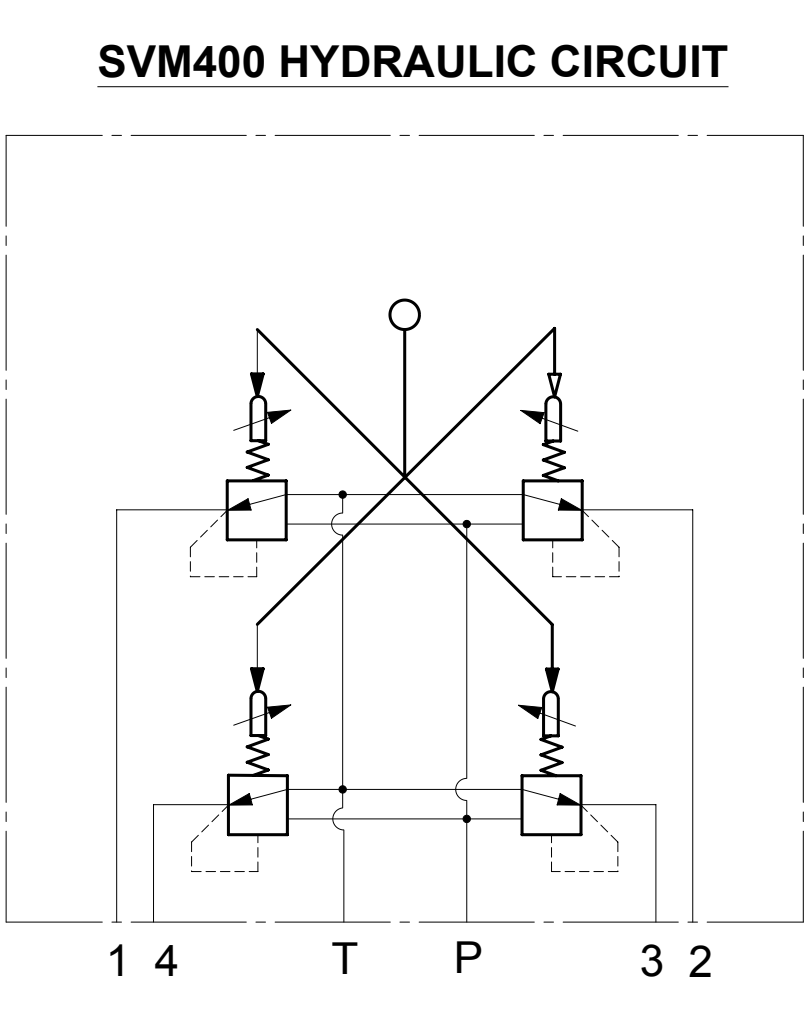
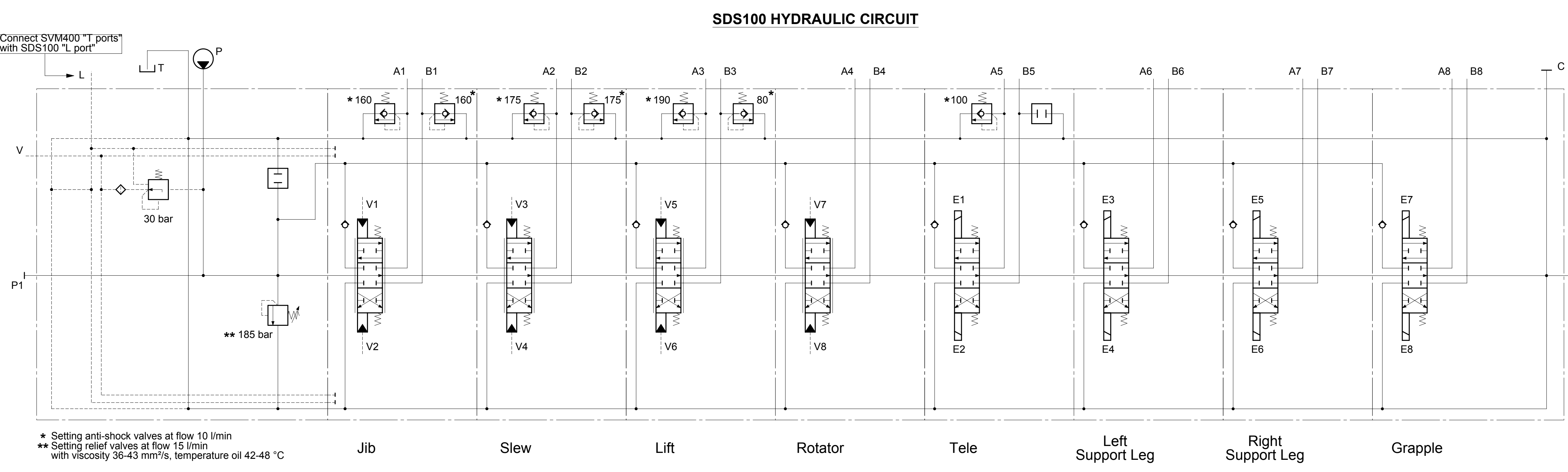
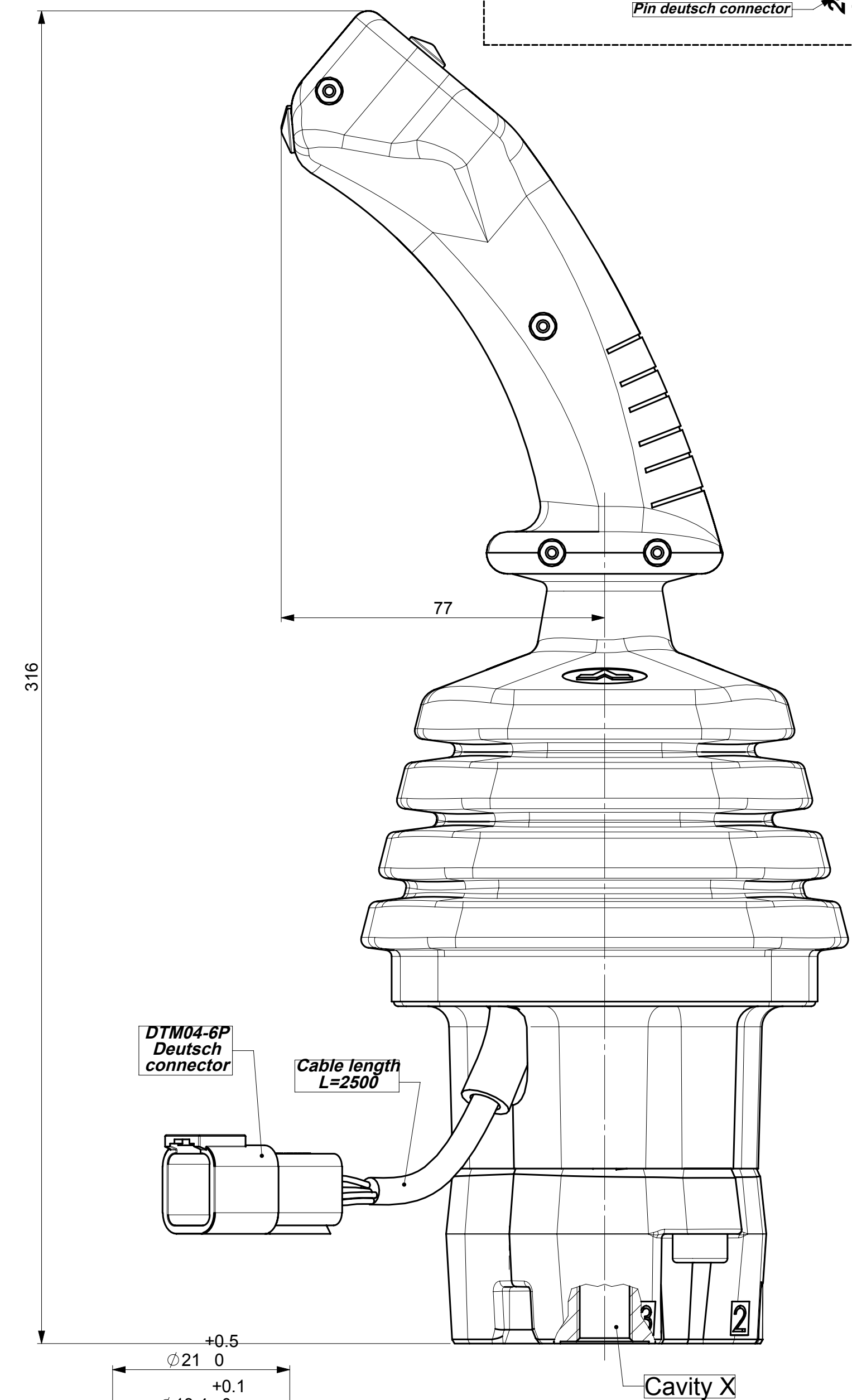
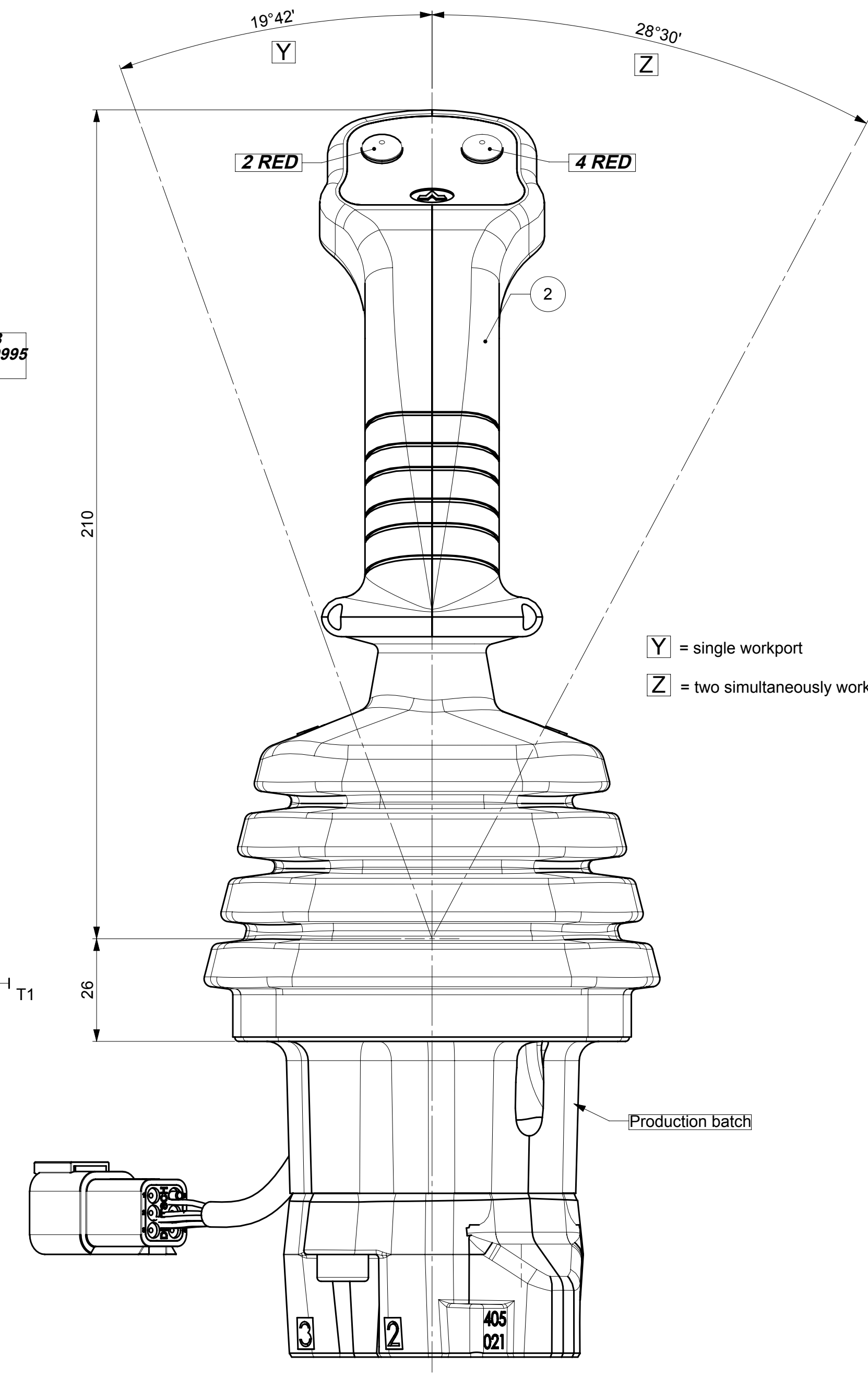


**N°2 SVM400/01-B HYDRAULIC PILOT CONTROL VALVE**



**SDS100 WORKING CONDITIONS**

Nominal flow	: 60 l/min
Nominal pressure	: 315 bar
Max. backpressure	: 30 bar
Fluid	: Mineral based oil
Viscosity range	: 12 to 400 mm <sup>2</sup> /s
Seal material	: NBR
Temperature range of the fluid	: -20°C to +80°C
Environmental temperature	: -20°C to +80°C
Max. rate of contamination of the fluid	: 19/16 - ISO4406
Internal leakage	: 5 cm <sup>3</sup> /min at 100 bar, 40°C and 48 mm <sup>2</sup> /s

**SVM400 WORKING CONDITIONS**

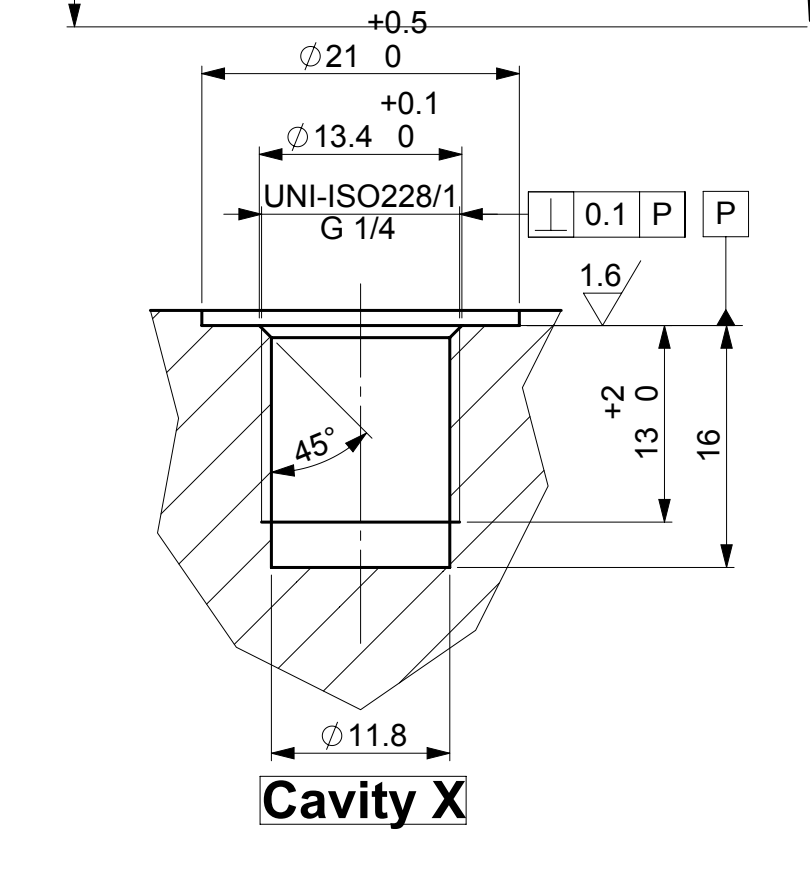
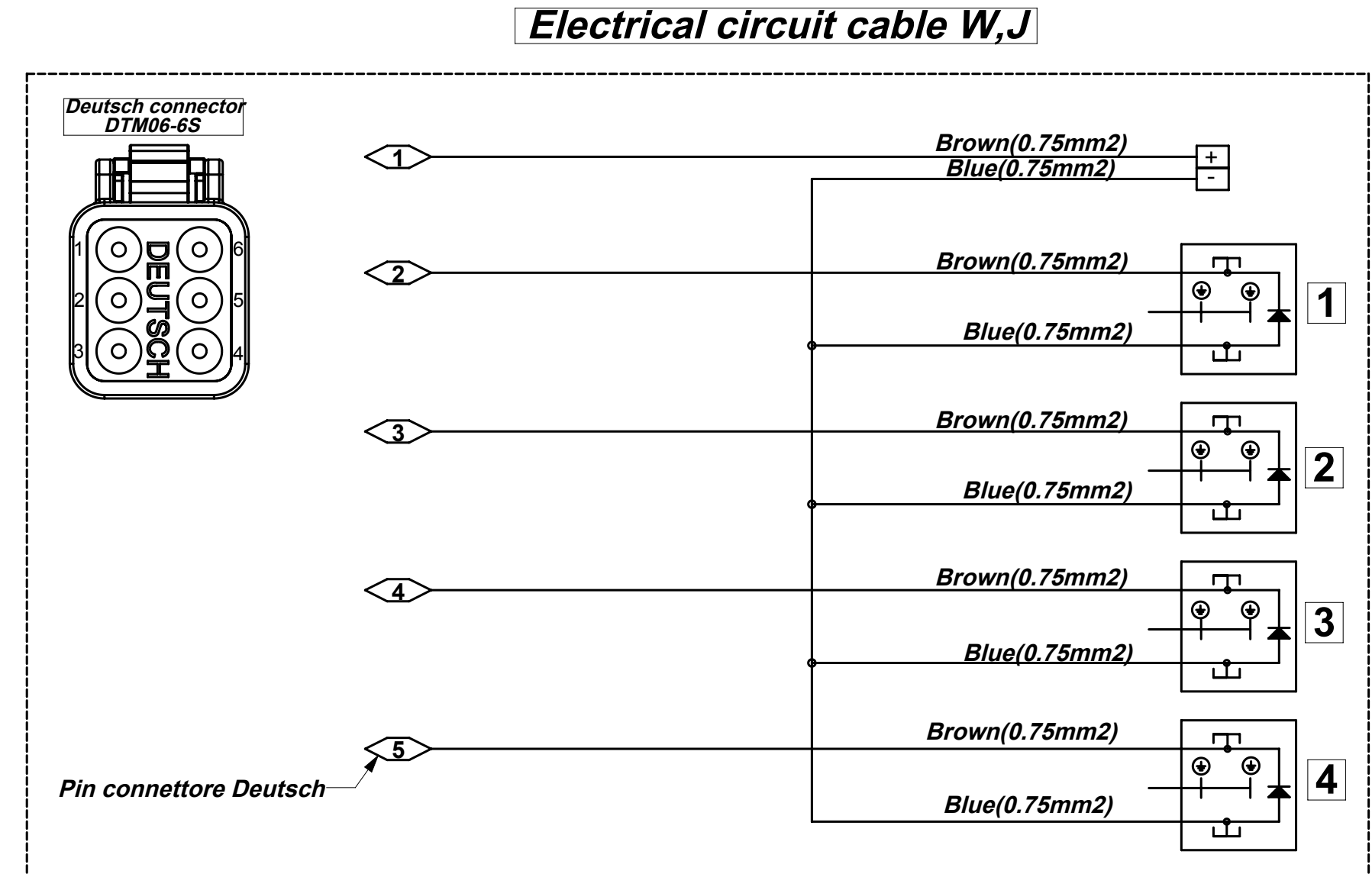
Nominal flow	: from 5 l/min to 20 l/min
Nominal pressure	: from 30 bar to 100 bar
Max. backpressure	: 3 bar
Fluid	: Mineral based oil
Temperature range of the fluid	: -10°C to +80°C
Environmental temperature	: -40°C to +60°C
Max. rate of contamination of the fluid	: 15/12 - ISO4406
Max. hysteresis	: 0.5 bar
Internal leakage	: from 10 to 18 cm <sup>3</sup> /min at 30 bar, 40°C and 48 mm <sup>2</sup> /s

**ELECTRICAL FEATURES**

Nominal voltage	: 10.5 VDC ± 10%
Nominal power	: 36 W
Nominal current	: 3.4 A
Resistance	: 3 Ohm
Duty	: 100%
Ambient operating range	: -54°C to +60°C
Coil insulation	: Class H
Internal pressure	: 70 bar operating, 210 bar static

**CONTROL DEVICE FEATURES HANDLEVERS**

POS. 2,4-7-8 PUSH-BUTTONS  
 EXECUTION : Spring return  
 CURRENT/ VOLTAGE MAX : 7A resistive load (28VDC)  
 MECHANICAL LIFE : 1.000.000 (n° of operations)  
 ELECTRICAL LIFE : 500.000 (n° of operations)  
 OPERATING FORCE : 0.8N  
 WEATHER PROTECTION : IP50



Pos.	Code	Description	Quant.
3	183480098	KIT CABLE KC005 JMS	2
2	181420332	SVM400 SPECMA JMS	2
1	111080011	SDS100/8 SPECMA JMS	1

Last revision description : Update SDS100 working conditions (controls backpressure).

**walvoil** HYDRAULIC CONTROL SYSTEMS

Substitute Same code  
 Cigarini  
 Technical Reference:  
 Draw: 15/05/12; Manicari  
 Code  
 1XSD10005 I.R. 02