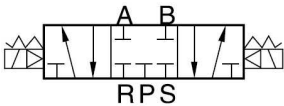


Maneuvering valves  
Electrical actuating

Solenoid pneumatic valve 5/3 closed center



Working pressure(Bar)	1.5 - 8.0
Guaranteed pressure(Bar)	12
Working temperature(°C)	-5 - 60
Max. acting frequency	5 cycles/s
Port size	In=Out= G 1/4 Exhaust=G1/8

Part n°	R1	Details	Type
NEU100110	1/8" BSP	1/8"	5/3
NEU100113	1/8" BSP	1/4"	5/3
NEU100115	1/4" BSP	1/4"	5/3
NEU100118	3/8" BSP	3/8"	5/3
NEU100120	1/2" BSP	1/2"	5/3

\*\*\* Review attached PDF\*\*\*  
NEU100113 body type 1/4