

ACCESSORIES & AIR GUNS DISTRIBUTION MANIFOLDS

PLUS

**AVAILABLE IN TWO DIFFERENT
MATERIALS DEPENDING ON
APPLICATIONS**

**LIGHT AND COMPACT ALLUMINIUM
MANIFOLDS, AVAILABLE IN
SEVERAL VERSIONS**

**STRONG AND SUITABLE STAINLESS
STEEL COLLECTORS FOR INDUSTRIAL
APPLICATIONS**



DISTRIBUTION MANIFOLDS / ALUMINIUM



p. 438 / **4100**



p. 438 / **4150**



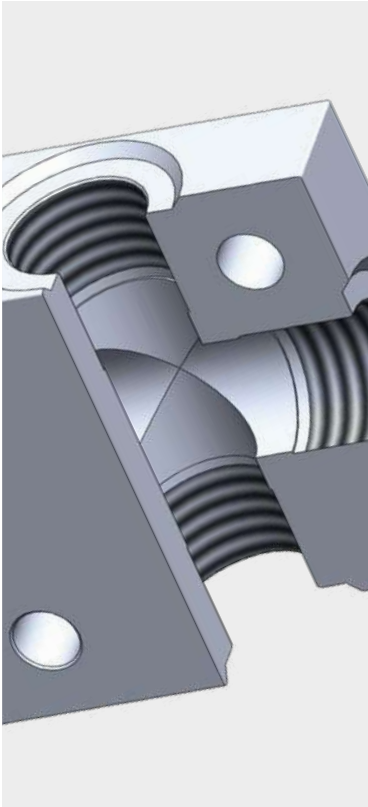
p. 439 / **4200**

DISTRIBUTION MANIFOLDS / STAINLESS STEEL AISI 304



p. 440 / **4150TRX**





-10°C ÷ 80°C



Working pressure:
20 Bar



Compressed air and fluids
suitable with construction
materials



- Parallel gas BSPP ISO 228
from G1/8" to G1/2"
- Metric ISO 262
M5



Body: Anodized aluminium (4100)
Aluminium (4150 and 4200)

AVAILABILITY:

Customized manifolds available on request



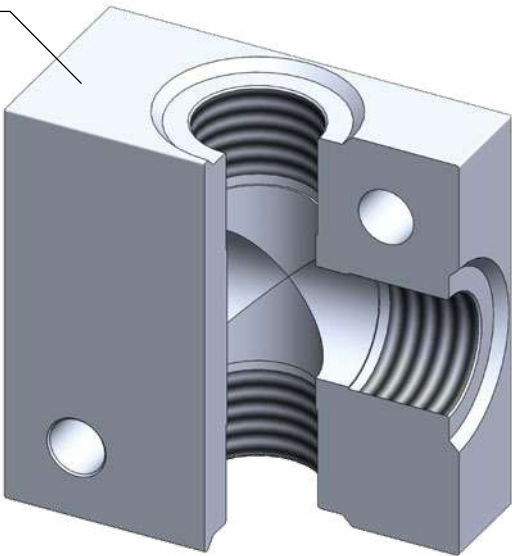
Products in compliance with
EC Regulation 1907/2006



Products in compliance with
the directive EU 2015/863

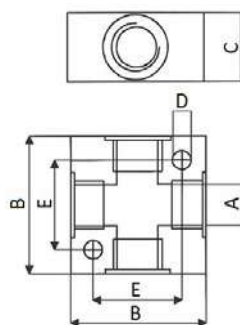
CONSTRUCTION DETAILS

Body



4100

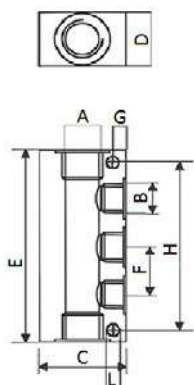
Anodized aluminium cross manifold



CODE	A	B	C	D	E	g
4100TR18-A	G 1/8"	25,0	15,0	4,5	17,0	17,5
4100TR14-A	G 1/4"	40,0	20,0	5,5	26,0	60,0
4100TR38	G 3/8"	40,0	25,0	5,5	26,0	70,0
4100TR38-A	G 3/8"	50,0	25,0	5,5	34,0	95,0
4100TR12-A	G 1/2"	50,0	30,0	5,5	34,0	129,0

4150

Aluminium distribution manifold with single outputs

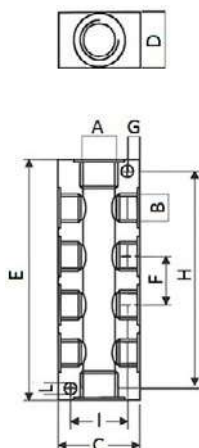


CODE	A	B	C	D	E	F	G	H	L	g
4150TR18M52	G 1/8"	M5-2	25,0	15,0	45,0	15,0	3,5	33,0	4,5	38,0
4150TR18M53	G 1/8"	M5-3	25,0	15,0	60,0	15,0	3,5	48,0	4,5	50,0
4150TR18M54	G 1/8"	M5-4	25,0	15,0	75,0	15,0	3,5	63,0	4,5	64,0
4150TR18M55	G 1/8"	M5-5	25,0	15,0	90,0	15,0	3,5	78,0	4,5	79,0
4150TR18M56	G 1/8"	M5-6	25,0	15,0	105,0	15,0	3,5	93,0	4,5	90,0
4150TR14182	G 1/4"	G 1/8"-2	30,0	20,0	54,0	18,0	4,5	45,0	4,5	64,0
4150TR14183	G 1/4"	G 1/8"-3	30,0	20,0	72,0	18,0	4,5	63,0	4,5	86,0
4150TR14184	G 1/4"	G 1/8"-4	30,0	20,0	90,0	18,0	4,5	81,0	4,5	110,0
4150TR14185	G 1/4"	G 1/8"-5	30,0	20,0	108,0	18,0	4,5	99,0	4,5	130,0
4150TR14186	G 1/4"	G 1/8"-6	30,0	20,0	126,0	18,0	4,5	117,0	4,5	154,0
4150TR38142	G 3/8"	G 1/4"-2	40,0	25,0	68,0	24,0	6,0	51,0	5,5	136,0
4150TR38143	G 3/8"	G 1/4"-3	40,0	25,0	92,0	24,0	6,0	75,0	5,5	184,0
4150TR38144	G 3/8"	G 1/4"-4	40,0	25,0	116,0	24,0	6,0	99,0	5,5	238,0
4150TR38145	G 3/8"	G 1/4"-5	40,0	25,0	140,0	24,0	6,0	123,0	5,5	298,0
4150TR38146	G 3/8"	G 1/4"-6	40,0	25,0	164,0	24,0	6,0	147,0	5,5	338,0
4150TR12382	G 1/2"	G 3/8"-2	50,0	30,0	78,0	26,0	6,5	59,0	5,5	228,0
4150TR12383	G 1/2"	G 3/8"-3	50,0	30,0	104,0	26,0	6,5	85,0	5,5	304,0
4150TR12384	G 1/2"	G 3/8"-4	50,0	30,0	130,0	26,0	6,5	111,0	5,5	380,0
4150TR12385	G 1/2"	G 3/8"-5	50,0	30,0	156,0	26,0	6,5	137,0	5,5	456,0
4150TR12386	G 1/2"	G 3/8"-6	50,0	30,0	182,0	26,0	6,5	163,0	5,5	530,0
4150TR12122	G 1/2"	G 1/2"-2	50,0	30,0	102,0	34,0	6,5	83,0	5,5	292,0
4150TR12123	G 1/2"	G 1/2"-3	50,0	30,0	136,0	34,0	6,5	117,0	5,5	392,0
4150TR12124	G 1/2"	G 1/2"-4	50,0	30,0	170,0	34,0	6,5	151,0	5,5	488,0
4150TR12125	G 1/2"	G 1/2"-5	50,0	30,0	204,0	34,0	6,5	185,0	5,5	584,0
4150TR12126	G 1/2"	G 1/2"-6	50,0	30,0	238,0	34,0	6,5	219,0	5,5	682,0



4200

Aluminium distribution manifold with double outputs



CODE	A	B	C	D	E	F	G	H	L	I	g
4200TR18M522	G 1/8"	M5-2+2	25,0	15,0	45,0	15,0	3,5	33,0	4,5	18,0	37,0
4200TR18M533	G 1/8"	M5-3+3	25,0	15,0	60,0	15,0	3,5	48,0	4,5	18,0	50,0
4200TR18M544	G 1/8"	M5-4+4	25,0	15,0	75,0	15,0	3,5	63,0	4,5	18,0	62,0
4200TR18M555	G 1/8"	M5-5+5	25,0	15,0	90,0	15,0	3,5	78,0	4,5	18,0	74,0
4200TR18M566	G 1/8"	M5-6+6	25,0	15,0	105,0	15,0	3,5	93,0	4,5	18,0	98,0
4200TR141822	G 1/4"	G 1/8"-2+2	30,0	20,0	54,0	18,0	4,5	45,0	4,5	21,0	60,0
4200TR141833	G 1/4"	G 1/8"-3+3	30,0	20,0	72,0	18,0	4,5	63,0	4,5	21,0	81,0
4200TR141844	G 1/4"	G 1/8"-4+4	30,0	20,0	90,0	18,0	4,5	81,0	4,5	21,0	100,0
4200TR141855	G 1/4"	G 1/8"-5+5	30,0	20,0	108,0	18,0	4,5	99,0	4,5	21,0	122,0
4200TR141866	G 1/4"	G 1/8"-6+6	30,0	20,0	126,0	18,0	4,5	117,0	4,5	21,0	142,0
4200TR381422	G 3/8"	G 1/4"-2+2	40,0	25,0	68,0	24,0	6	51,0	5,5	28,0	127,0
4200TR381433	G 3/8"	G 1/4"-3+3	40,0	25,0	92,0	24,0	6	75,0	5,5	28,0	170,0
4200TR381444	G 3/8"	G 1/4"-4+4	40,0	25,0	116,0	24,0	6	99,0	5,5	28,0	216,0
4200TR381455	G 3/8"	G 1/4"-5+5	40,0	25,0	140,0	24,0	6	123,0	5,5	28,0	266,0
4200TR381466	G 3/8"	G 1/4"-6+6	40,0	25,0	164,0	24,0	6	147,0	5,5	28,0	312,0
4200TR123822	G 1/2"	G 3/8"-2+2	50,0	30,0	78,0	26,0	6,5	59,0	5,5	37,0	210,0
4200TR123833	G 1/2"	G 3/8"-3+3	50,0	30,0	104,0	26,0	6,5	85,0	5,5	37,0	278,0
4200TR123844	G 1/2"	G 3/8"-4+4	50,0	30,0	130,0	26,0	6,5	111,0	5,5	37,0	344,0
4200TR123855	G 1/2"	G 3/8"-5+5	50,0	30,0	156,0	26,0	6,5	137,0	5,5	37,0	412,0
4200TR123866	G 1/2"	G 3/8"-6+6	50,0	30,0	182,0	26,0	6,5	163,0	5,5	37,0	478,0
4200TR121222	G 1/2"	G 1/2"-2+2	50,0	30,0	102,0	34,0	6,5	83,0	5,5	37,0	268,0
4200TR121233	G 1/2"	G 1/2"-3+3	50,0	30,0	136,0	34,0	6,5	117,0	5,5	37,0	348,0
4200TR121244	G 1/2"	G 1/2"-4+4	50,0	30,0	170,0	34,0	6,5	151,0	5,5	37,0	430,0
4200TR121255	G 1/2"	G 1/2"-5+5	50,0	30,0	204,0	34,0	6,5	185,0	5,5	37,0	512,0
4200TR121266	G 1/2"	G 1/2"-6+6	50,0	30,0	238,0	34,0	6,5	219,0	5,5	37,0	596,0





-25°C ÷ 100°C
Below 0°C in the presence of
water with antifreeze glycol



Working pressure:
Up to 25 Bar



Compressed air, water, oil and
fluids suitable with construction
materials



Inlet thread:
Parallel gas BSPP ISO 228
from G1-1/2" to G2"

Outlet thread:
Taper gas BSPT ISO 7
R3/4"

Pressure Gauge thread:
Parallel gas BSPP ISO 228
G1/2"



Body: Stainless steel AISI 304
with treatment of
electropolishing



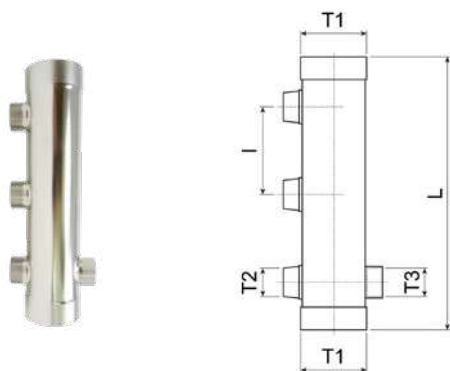
Products in compliance with
EC Regulation 1907/2006



Products in compliance with
the directive EU 2015/863

4150TRX

Stainless steel AISI 304 distribution manifold



CODE	T1	T2	T3	I	L	N° HOLES
4150TRX112344	G 1-1/2"	R 3/4"	G 1/2"	70,0	291,0	4
4150TRX112345	G 1-1/2"	R 3/4"	G 1/2"	70,0	361,0	5
4150TRX112346	G 1-1/2"	R 3/4"	G 1/2"	70,0	431,0	6
4150TRX112347	G 1-1/2"	R 3/4"	G 1/2"	70,0	501,0	7
4150TRX112348	G 1-1/2"	R 3/4"	G 1/2"	70,0	571,0	8
4150TRX112349	G 1-1/2"	R 3/4"	G 1/2"	70,0	641,0	9
4150TRX1123410	G 1-1/2"	R 3/4"	G 1/2"	70,0	711,0	10
4150TRX1123411	G 1-1/2"	R 3/4"	G 1/2"	70,0	781,0	11
4150TRX1123412	G 1-1/2"	R 3/4"	G 1/2"	70,0	851,0	12
4150TRX1123413	G 1-1/2"	R 3/4"	G 1/2"	70,0	921,0	13
4150TRX1123414	G 1-1/2"	R 3/4"	G 1/2"	70,0	991,0	14
4150TRX2344	G 2"	R 3/4"	G 1/2"	70,0	299,0	4
4150TRX2345	G 2"	R 3/4"	G 1/2"	70,0	369,0	5
4150TRX2346	G 2"	R 3/4"	G 1/2"	70,0	439,0	6
4150TRX2347	G 2"	R 3/4"	G 1/2"	70,0	509,0	7
4150TRX2348	G 2"	R 3/4"	G 1/2"	70,0	579,0	8
4150TRX2349	G 2"	R 3/4"	G 1/2"	70,0	649,0	9
4150TRX23410	G 2"	R 3/4"	G 1/2"	70,0	719,0	10
4150TRX23411	G 2"	R 3/4"	G 1/2"	70,0	789,0	11
4150TRX23412	G 2"	R 3/4"	G 1/2"	70,0	859,0	12
4150TRX23413	G 2"	R 3/4"	G 1/2"	70,0	929,0	13
4150TRX23414	G 2"	R 3/4"	G 1/2"	70,0	999,0	14

T1 & T3: Female thread
T2: Male thread

