

Cartridge Valves Technical Information

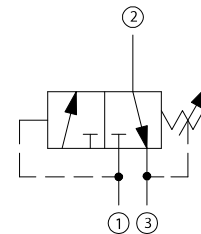
Sequence valves

VDP 06/32 01

OPERATION

This is a direct-acting, spool-type sequence valve with internal pilot. This valve allows flow between 2 and 3 and blocks 1. At reaching the sequence pressure, 1 is opened to 2. Note that pressure at 3 is additive to the spring setting.

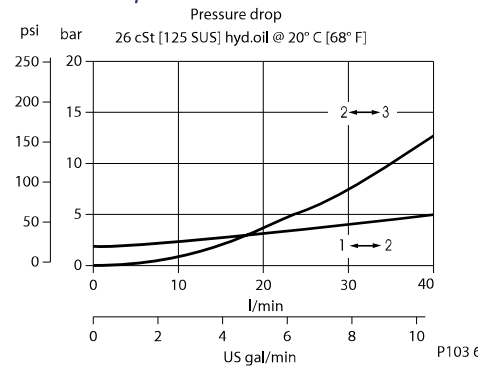
Schematic



P102 153E

SPECIFICATIONS

Theoretical performance



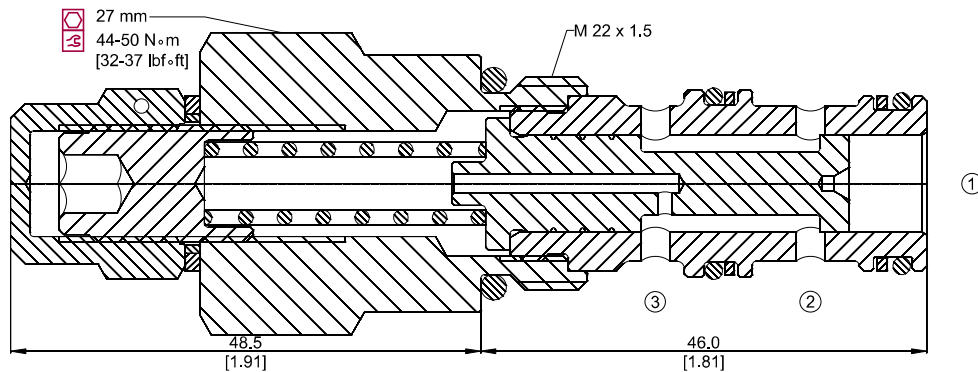
Specifications

Rated pressure	315 bar [4500 psi]
Rated flow at 7 bar [100 psi]	30 l/min [8 US gal/min]
Weight	0.21 kg [0.46 lb]
Cavity	NCS06/3

DIMENSIONS

mm [in]

Cross-sectional view



P103 657

ORDERING INFORMATION

VDP 06/32 01 - M - 1 - 00 - V

Adjustment

E = Internal screw
EN = External screw
M = Handwheel

Setting range

1 = 5-17 bar [73-240 psi]
2 = 10-30 bar [145-435 psi]
3 = 20-40 bar [290-580 psi]

To order this valve with a specific factory setting, contact your Sauer-Danfoss representative

Seals

V = Viton
Omit = Buna-N

Housing and ports

00 = No Housing
SE3/8 = AL, 3/8 BSP
SE1/2 = AL, 1/2 BSP
SE6S = AL, #6 SAE
SE8S = AL, #8 SAE
Other housings available

Seal kit

230000110
230000070

Housing P/N

No Housing
NCS06/3-SE-3/8
NCS06/3-SE-1/2
NCS06/3-SE-6S
NCS06/3-SE-8S

P103 711E