

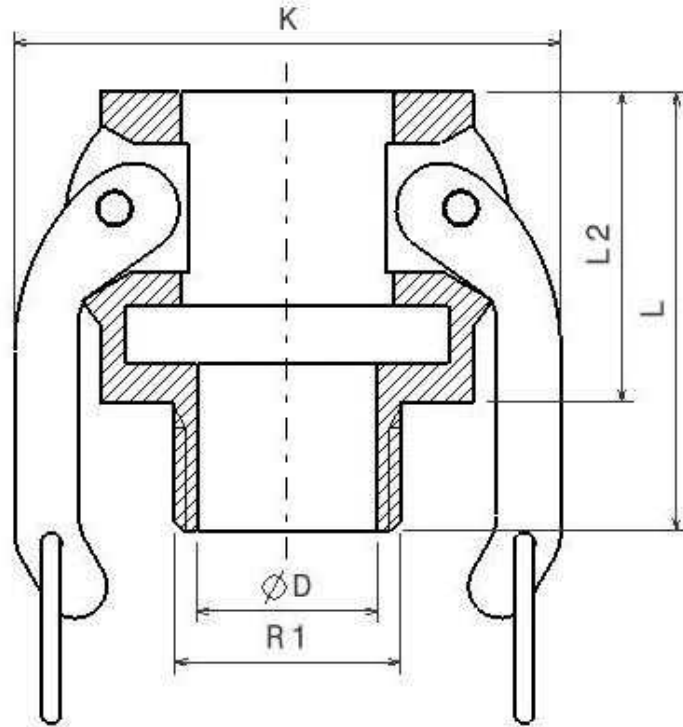
DIN EN 14420-7 Camlock Fittings

Camlock Unions AISI 316

Female Camlock coupling, male BSPT threaded Type B

Stainless Steel AISI 316

Page: 1/1



Norms: Male thread according to EN10226-1
Female thread according to ISO 228-1

PN: 1/2": 150 PSI --- 3/4"-2": 250 PSI --- 3": 125 PSI --- 4": 100 PSI

Part n°	DN	R1	L	L2	ØD	K
ZB012	12	1/2"	45	30	14,5	48
ZB015	20	1/2"	52	32	16	53
ZB020	20	3/4"	52	32	19	54
ZB025	25	1"	62	40	26	61
ZB032	32	1"1/4	68	48	33	79
ZB040	40	1"1/2	71	49	39	83
ZB050	50	2"	78	54	50	94
ZB065	65	2"1/2	85	59	67	109
ZB080	80	3"	90	60	75	130
ZB100	100	4"	101	62	98	158

The dimensions in micro-casting parts are approximated in those elements without mechanization.
NBR gasket