

Screw low pressure fittings 150 LBS

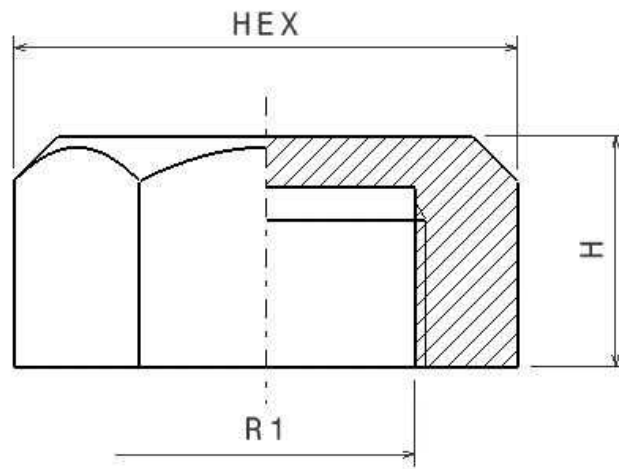
Screwed fittings low pressure 150 LBS

Hexagon female cap. FIG.300

Stainless Steel AISI 316

DICSA

1/1



Norms: Male thread according to EN10226-1
Female thread according to ISO 228-1

Face: 1/8" => 3/4" Hexagonal; 1" => 4" Octagonal

PN: 1/2" - 2": 17,6 Bar --- 2 1/2" - 3": 14 Bar --- 4" - 6": 7 Bar

Part nº	R1	HEX 1	H
ZFIG30002	1/8"	12,5	12,1
ZFIG30004	1/4"	15,2	15,1
ZFIG30006	3/8"	18,7	15,5
ZFIG30008	1/2"	25	19
ZFIG30012	3/4"	30,7	20
ZFIG30016	1"	37,3	23
ZFIG30020	1"1/4	46,5	24
ZFIG30024	1"1/2	53	25
ZFIG30032	2"	64,3	29,5
ZFIG30040	2"1/2	80	32
ZFIG30048	3"	92,5	34,5
ZFIG30060	4"	120	40,5

The dimensions in micro-casting parts are approximated in those elements without mechanization.