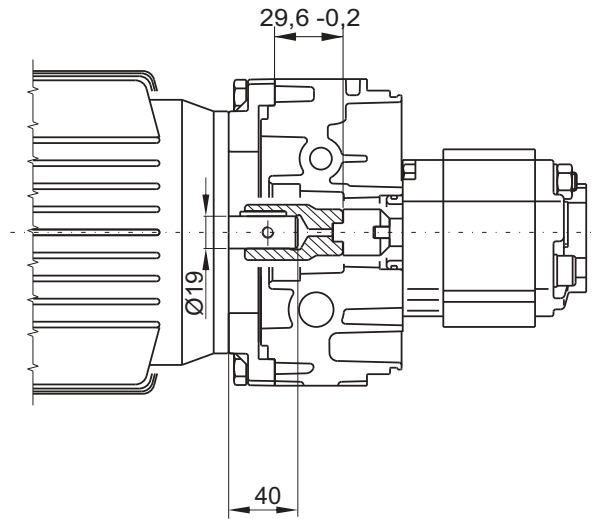


MOUNTING KIT FOR FRAME 80 B14 IEC MOTORS

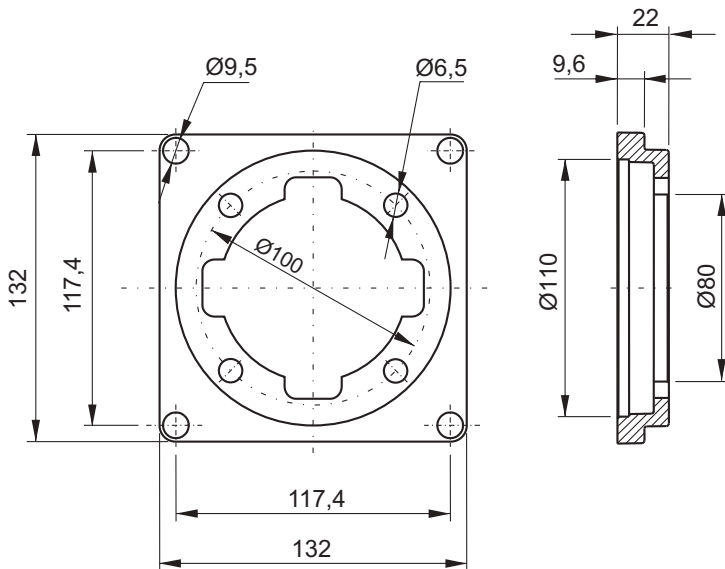


Kit weight: 0,36 Kg



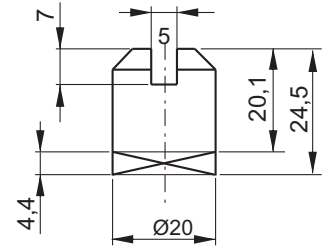
Adaptor flange

Adaptor flange **F27010002** Weight: 0,21 Kg

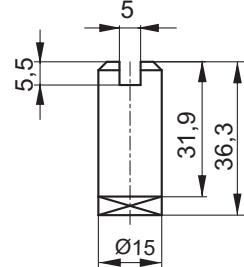


Couplings

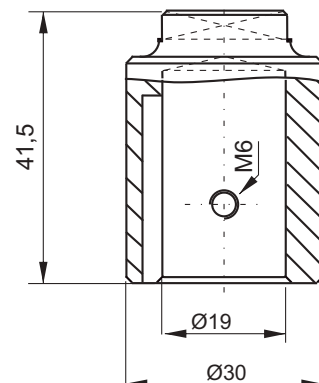
Pump side (group1) **E36100000** Weight: 0,05 Kg



Pump side (group0) **E36100006** Weight: 0,04 Kg



Motor side **E36100002** Weight: 0,12 Kg



| Description | Assembly code* | Spare part code |
|---------------------------------|------------------------------------------|----------------------------------------------------|
| B14 80 motor side half-coupling | XB14 80 -0 (gr.0) -1 (gr.1) | E36100002 |
| B14 pump side half-coupling | | E36100006 (gr.0) E36100000 (gr.1) |
| B14 80 adaptor flange | | F27010002 |

* Note: The coupling+flange kit is already included when specifying a B14 motor in PPC assembly code. XB14 80 code has to be indicated only when ordering PPC with no motor but with coupling+flange kit.

Attention! When assembling frame 80 B14 motors with XB14 flange+couplings kit, please respect positioning tolerances as per top drawing. Non-compliance can cause malfunctioning or component failure.