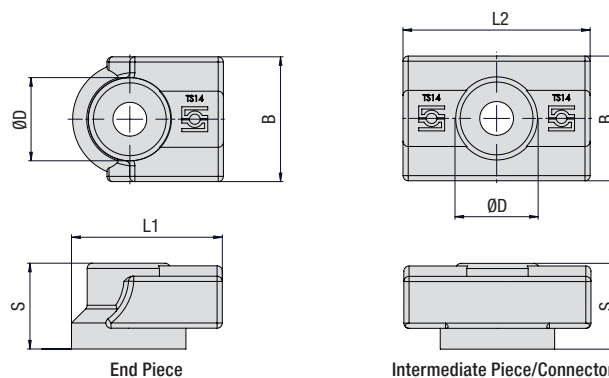
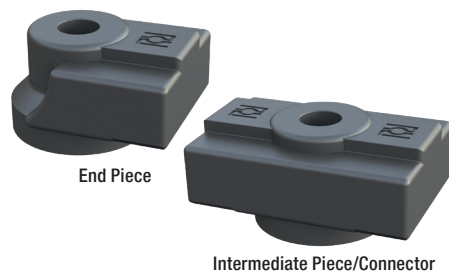


## Fastening Adaptor

(for Use with Mounting Rail TS)

### Type SWG-MRA



### Ordering Code

#### Fastening Adaptor

**\*SWG-MRA-\*TS14-\*S-\*A**

* Fastening Adaptor	<b>SWG-MRA</b>
* for Mounting Rail TS14	<b>TS14</b>
* End Piece	<b>S</b>
Intermediate Piece/Connector	<b>D</b>
* Version	<b>A</b>

Group		Dimensions (mm/in)					Ordering Code	Ordering Code
STAUFF	DIN	ØD	L1	L2	B	S	(End Piece)	(Intermediate Piece/Connector)
1D	0 bis 8	16	29	36	24	16,5	SWG-MRA-TS14-S-A	SWG-MRA-TS14-D-A
5D		.63	1.14	1.42	.94	.65		

Fastening Adaptor, type SWG-MRA are also suitable for Twin Series.

Alternative materials and surface finishings are available upon request. Contact STAUFF for further information.

### Product Features

Fastening Adaptor for Direct Screw Mounting of STAUFF Mounting Rails Type TS-14 with Weld Studs M6 and Bolts M6 or 1/4-20 UNC (Support Sleeve / Washer Recommended)

Material: Polyamide

### Instructions for Use

- Are pressed into the side of the Mounting Rail TS-14 and bolted to the installation
- Positioning of the mounting rail 2 mm above the installation
- Initially designed for use with weld studs with internal thread M6
- Can also be used with M6 bolts – depending on the load, an internal support sleeve (e.g. 1130023624 LBBU-HUE-1/1D-SP-M6/U1/4-W3) and/or washer may be required
- Maximum recommended distance between two fastening adaptors of 222 mm (corresponds to a length of the mounting rail of 200 mm)
- In case of doubt, please consult STAUFF for information on maximum static and dynamic loads