



PACKING PLATE

TYPE EREM203... AND EVB3...

VALVOLA 2/2

TIPO EREM203... ED EVB3...

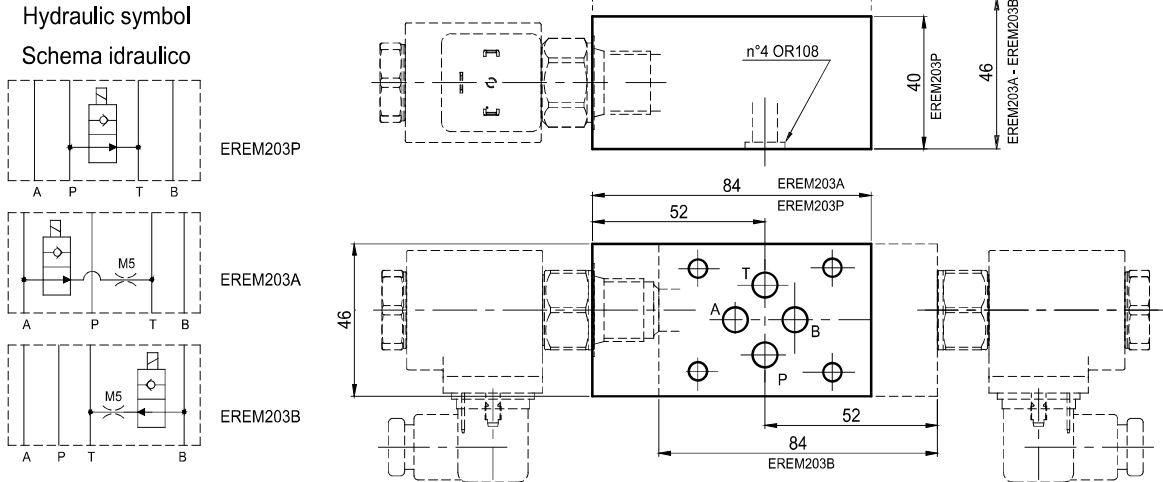
65.1

PACKING PLATE
VALVOLA 2/2

Modular electric operated by-pass valve. Weight 1.1 Kg

Valvola 2/2 a comando elettrico, CETOP 3, per montaggio modulare. Peso = 1.1 Kg

Le versioni su A e su B sono predisposte per grano M5.



Ordering code:

Esempio di ordinazione:



A = valve on / valvola su A

B = valve on / valvola su B

P = valve on / valvola su P

EUROFLUID = E

electric operated = RE
comando elettrico =

modular type = M
montaggio modulare =

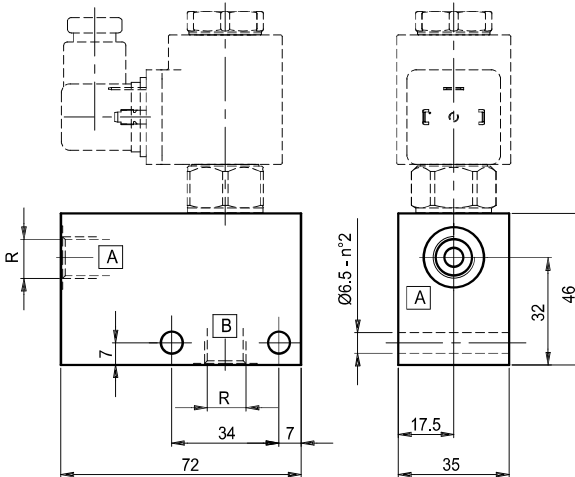
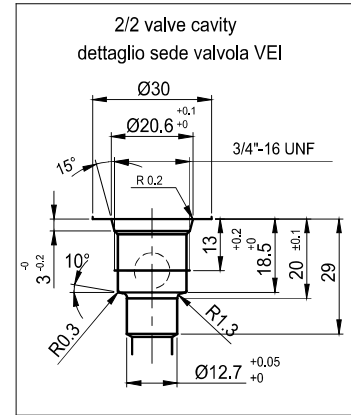
CETOP 3

20 = By pass valve
= per valv. 2/2

In-line mounting plate for 2/2 solenoid valve.

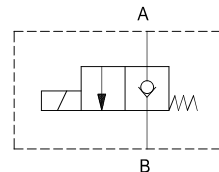
Weight 0.8 Kg

Valvola 2/2 pilotata a comando elettrico
per montaggio in linea. Peso= 0.8 Kg



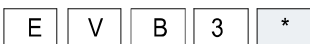
Hydraulic symbol

Schema idraulico



ordering code:

Esempio di ordinazione:



EUROFLUID

Valve/Valvola = V

Type / Tipo = B

CETOP 3 = 3

R_ 1/4"G = 14

R_ 3/8" G = 38

Notes: see page 94 for technical characteristics of valve 2/2

NOTA: Per le caratteristiche tecniche della valvola "VEI" 2/2 vedere pag 94