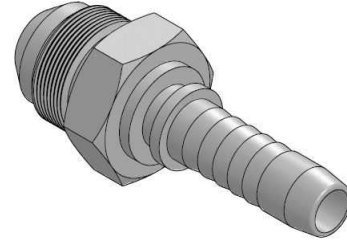
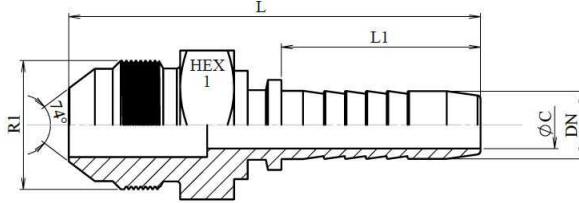


Male JIC 37° cone

Mild Steel 1.0737 (or equivalent)

1/1

Part n°	DN	R1	L	L1	HEX 1	ØC
241400704	1/4"	7/16" 20h UNF	53,5	28	14	4
241400804	1/4"	1/2" 20h UNF	54	28	14	4
241400805	5/16"	1/2" 20h UNF	54,3	28	17	5,5
241400904	1/4"	9/16" 18h UNF	53,6	28	17	4
241400905	5/16"	9/16" 18h UNF	53,9	28	17	5,5
241400906	3/8"	9/16" 18h UNF	55,6	29,5	17	7
241401206	3/8"	3/4" 16h UNF	61	29,5	22	7
241401208	1/2"	3/4" 16h UNF	62,5	30,5	22	9,5
241401406	3/8"	7/8" 14h UNF	63,3	29,5	24	7
241401408	1/2"	7/8" 14h UNF	64,8	30,5	24	9,5
241401410	5/8"	7/8" 14h UNF	68,6	34	24	12
241401708	1/2"	1"1/16 12h UNF	71,6	30,5	27	9,5
241401710	5/8"	1"1/16 12h UNF	72,3	34	30	12
241401712	3/4"	1"1/16 12h UNF	78,5	39	30	15
241402112	3/4"	1"5/16 12h UNF	80,5	39	36	15
241402116	1"	1"5/16 12h UNF	88,5	47	36	19
241402616	1"	1"5/8 12h UNF	91,5	47	46	19
241402620	1"1/4	1"5/8 12h UNF	100,5	54,5	46	26
241403020	1"1/4	1"7/8 12h UNF	107,8	54,5	55	26
241403024	1"1/2	1"7/8 12h UNF	108	58	50	32
241404032	2"	2"1/2 12h UNF	131,5	72	65	44