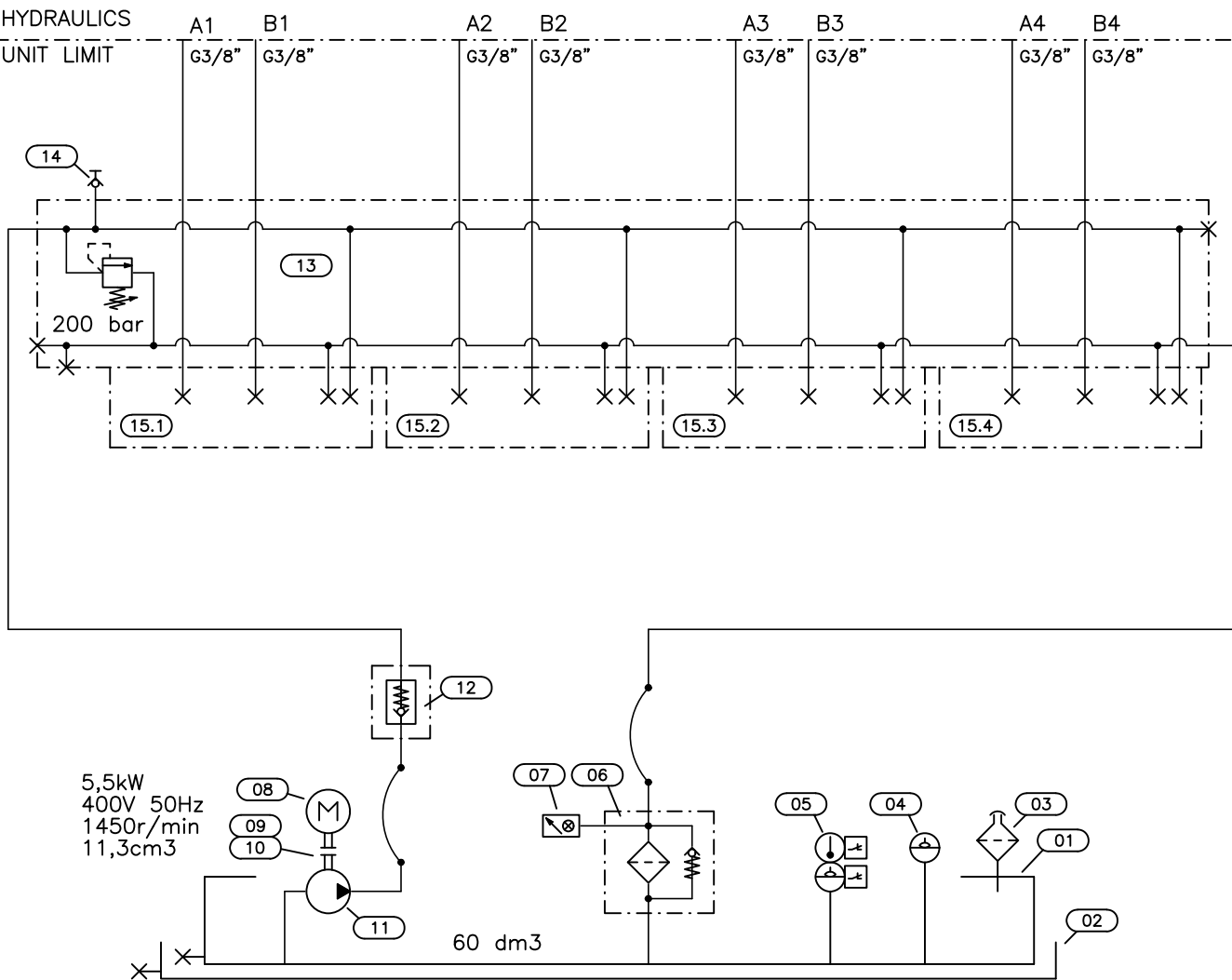


HYDRAULICS

UNIT LIMIT



POS	QTY	COMPONENT DESCRIPTION	TYPE
01	1	RESERVOIR	S60-5.5
02	1	PROTECTIVE POOL	VA60
03	1	RESERVOIR-BREATHER FILTER	FSB/25
04	1	SIGHT GLASS (Termometer)	XLT05TM12
05	1	FLUID-LEVEL INDICATOR	LM1FPA250NCT70NC
06	1	RETURN FILTER WITH BYPASS VALVE	MPF1002AG2A10HBP01
07	1	OPTICAL CLOGGING INDICATOR	BVA14P01
08	1	ELECTRIC MOTOR	3TA132S-4 B35 (5,5kW 400V 50Hz 1450r/min)
09	1	BELLOUSING	LMG300MFS2004S
10	1	COUPLING	AKG11FS200Z
11	1	GEAR PUMP	HYPA2C11E20T2B2/2S1NS (11,3cm <sup>3</sup> )
12	1	NON-RETURN VALVE WITH SPRING	VU-38
13	1	MULTIPLE SUB-PLATE	EM213/4 X3F
14	1	TAKE-OFF POINT	620.01.204.21
15.1-4	4	CLOSING PLATE	EB103

Customer		Project	
Hydraulics diagram 60P-5.5-11.3-200			Date 13.03.2024
			Drawer A.L.
Diag. n:o HTR4028-60P	Work n:o		
Attachments	Qty	Weight kg.	