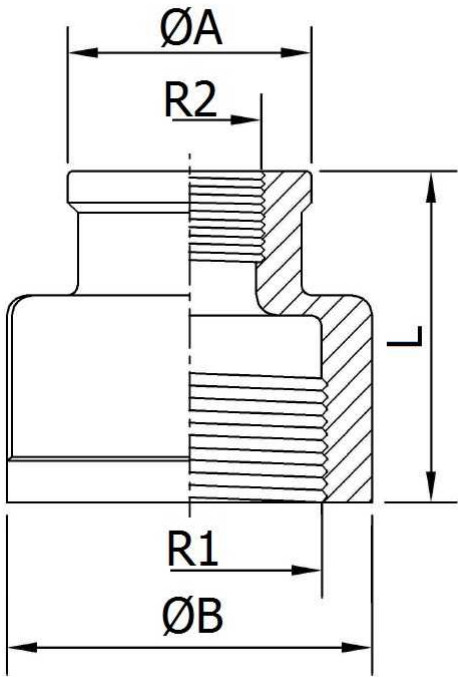


Female-female Reducer socket FIG.240

Stainless Steel AISI 316

1/1



**Norms:** Male thread according to EN10226-1 BSPT  
Female thread according to ISO 228-1 BSP  
**PN:** 1/2" - 2": 17,6 Bar --- 2 1/2"- 3": 14 Bar --- 4"- 6": 7 Bar

| Part n°     | R1    | R2    | L    | ØA    | ØB    |
|-------------|-------|-------|------|-------|-------|
| ZFIG2400402 | 1/4"  | 1/8"  | 21,1 | 14    | 17,1  |
| ZFIG2400604 | 3/8"  | 1/4"  | 28,1 | 14    | 22    |
| ZFIG2400806 | 1/2"  | 3/8"  | 31,7 | 21    | 26,7  |
| ZFIG2401208 | 3/4"  | 1/2"  | 36,6 | 27    | 32,1  |
| ZFIG2401612 | 1"    | 3/4"  | 40   | 32    | 39,5  |
| ZFIG2402016 | 1"1/4 | 1"    | 43,2 | 39    | 48,9  |
| ZFIG2402420 | 1"1/2 | 1"1/4 | 46   | 48,5  | 55,3  |
| ZFIG2403224 | 2"    | 1"1/2 | 51,5 | 55,5  | 69    |
| ZFIG2404032 | 2"1/2 | 2"    | 58,3 | 65,75 | 83    |
| ZFIG2404832 | 3"    | 2"    | 60   | 66    | 95,5  |
| ZFIG2404840 | 3"    | 2"1/2 | 72   | 82,2  | 95,5  |
| ZFIG2406032 | 4"    | 2"    | 68   | 68,4  | 123,5 |

The dimensions in micro-casting parts are approximated in those elements without mechanization.