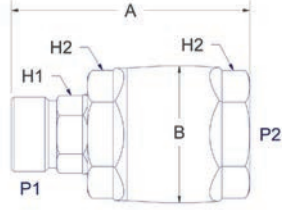
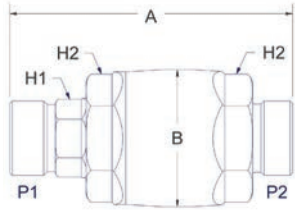


MALE METRIC (DIN 3852) - FEMALE ORFS (O-RING FACE SEAL)



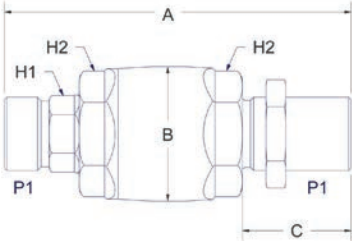
| PART NU. | A | B | P1 | P2 | H1 | H2 | SEAL KIT |
|---------------|-------|-------|-----------|-----------------|---------|---------|---------------|
| SZ-M20SM-S08F | 2.95" | 1.53" | M20 X 1.5 | 13/16 - 16 UNF | 3/4" | 1 5/16" | SZ-08-002SK-A |
| SZ-M24SM-S10F | 3.22" | 1.85" | M24 X 1.5 | 1" - 14 UNF | 1 1/16" | 1 3/4" | SZ-10-002SK-A |
| SZ-M30SM-S12F | 3.83" | 2.31" | M30 X 2.0 | 1 3/16"- 12 UN | 1 1/16" | 1 3/4" | SZ-12-002SK-A |
| SZ-M36SM-S16F | 4.33" | 2.31" | M36 X 2.0 | 1 7/16"- 12 UN | 1 5/16" | 2" | SZ-16-002SK-A |
| SZ-M42SM-S20F | 4.70" | 2.72" | M42 X 2.0 | 1 11/16"- 12 UN | 1 9/16" | 2 3/8" | SZ-20-001SK-A |

MALE METRIC - MALE METRIC (DIN 3852)



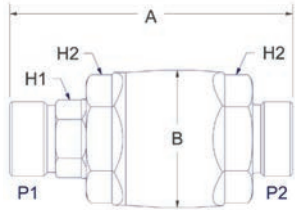
| PART NU. | A | B | P1 | P2 | H1 | H2 | SEAL KIT |
|----------------|-------|-------|-----------|-----------|---------|---------|---------------|
| SZ-M20SM-M20SM | 3.52" | 1.53" | M20 X 1.5 | M20 X 1.5 | 3/4" | 1 5/16" | SZ-08-002SK-A |
| SZ-M24SM-M24SM | 3.74" | 1.86" | M24 X 1.5 | M24 X 1.5 | 15/16" | 1 5/8" | SZ-10-002SK-A |
| SZ-M30SM-M27M | 4.58" | 2.09" | M30 X 2.0 | M27 X 2.0 | 1 1/16" | 1 3/4" | SZ-12-002SK-A |
| SZ-M30SM-M30SM | 4.75" | 2.09" | M30 X 2.0 | M30 X 2.0 | 1 1/16" | 1 3/4" | SZ-12-002SK-A |
| SZ-M30SM-M36SM | 4.75" | 2.09" | M30 X 2.0 | M30 X 2.0 | 1 1/16" | 1 3/4" | SZ-12-002SK-A |
| SZ-M30SM-M42SM | 4.75" | 2.09" | M30 X 2.0 | M30 X 2.0 | 1 1/16" | 1 3/4" | SZ-12-002SK-A |
| SZ-M36SM-M36SM | 5.94" | 2.40" | M36 X 2.0 | M36 X 2.0 | 1 5/16" | 2" | SZ-16-002SK-A |
| SZ-M42SM-M42SM | 7.08" | 2.88" | M42 X 2.0 | M42 X 2.0 | 1 9/16" | 2 3/8" | SZ-20-001SK-A |

MALE METRIC - MALE METRIC BULKHEAD (DIN 3852)



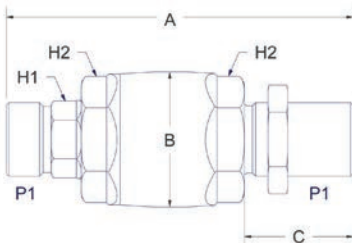
| PART NU. | A | B | C | P1 | H1 | H2 | SEAL KIT |
|-----------------|-------|-------|------|-----------|---------|---------|---------------|
| SZ-M20SM-M20SMB | 4.41" | 1.53" | 1.38 | M20 X 1.5 | 3/4" | 1 5/16" | SZ-08-002SK-A |
| SZ-M24SM-M24SMB | 4.72" | 1.85" | 1.50 | M24 X 1.5 | 1 1/16" | 1 3/4" | SZ-10-002SK-A |
| SZ-M30SM-M30SMB | 5.39" | 2.09" | 1.57 | M30 X 2.0 | 1 1/16" | 1 3/4" | SZ-12-002SK-A |
| SZ-M36SM-M36SMB | 5.94" | 2.40" | 1.61 | M36 X 2.0 | 1 5/16" | 2" | SZ-16-002SK-A |
| SZ-M42SM-M42SMB | 7.08" | 2.88" | 2.52 | M42 X 2.0 | 1 9/16" | 2 3/8" | SZ-20-001SK-A |

MALE METRIC LIGHT - MALE METRIC LIGHT



| PART NU. | A | B | P1 | P2 | H1 | H2 | SEAL KIT |
|----------------|-------|-------|-----------|-----------|---------|--------|---------------|
| SZ-M18LM-M18LM | 3.50" | 1.47" | M18 X 1.5 | M18 X 1.5 | 11/16" | 1 1/4" | SZ-08-001SK-A |
| SZ-M22LM-M22LM | 3.58" | 1.72" | M22 X 1.5 | M22 X 1.5 | 13/16" | 1 1/2" | SZ-10-001SK-A |
| SZ-M30LM-M30LM | 4.75" | 2.09" | M30 X 2.0 | M30 X 2.0 | 1 1/16" | 1 3/4" | SZ-12-002SK-A |
| SZ-M36LM-M36LM | 5.94" | 2.40" | M36 X 2.0 | M36 X 2.0 | 1 5/16" | 2" | SZ-16-002SK-A |

MALE METRIC LIGHT - MALE METRIC LIGHT BULKHEAD



| PART NU. | A | B | C | P2 | H1 | H2 | SEAL KIT |
|-----------------|-------|-------|-------|-----------|---------|--------|---------------|
| SZ-M18LM-M18LMB | 4.21" | 1.47" | 1.26" | M18 X 1.5 | 11/16" | 1 1/4" | SZ-08-001SK-A |
| SZ-M22LM-M22LMB | 4.65" | 1.72" | 1.57" | M22 X 1.5 | 13/16" | 1 1/2" | SZ-10-001SK-A |
| SZ-M30LM-M30LMB | 5.39" | 2.09" | 1.57" | M30 X 2.0 | 1 1/16" | 1 3/4" | SZ-12-002SK-A |
| SZ-M36LM-M36LMB | 5.94" | 2.40" | 1.61" | M36 X 2.0 | 1 5/16" | 2" | SZ-16-002SK-A |