

## F07 Miniature general purpose filters

- Port size: G1/8 & G1/4
- Direct ported filters with high water removal efficiency
- Very compact unit



### Technical features

**Medium:**  
Compressed air only

**Maximum inlet pressure:**  
10 bar (145 psi) Transparent bowl  
17 bar (246 psi) Metal bowl

**Filter element:**  
5 or 40 µm

**Typical flow:**  
see below

**Port sizes:**  
G1/8 or G1/4

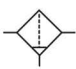

**Bowl volume:**  
31 ml

**Drain:** Manual or automatic

**Ambient/Media temperature:**  
Transparent bowl  
-34 ... +50°C (-29 ... +122°F)  
Metal bowl  
-34 ... +80°C (-29 ... +176°F)  
Air supply must be dry enough to avoid ice formation at temperatures below +2°C (+35°F)

**Materials:**  
Body: Zinc alloy  
Bowl: Plastic or Zinc alloy  
Filter element: Sintered PP  
Elastomers: NBR

### Technical data, standard model

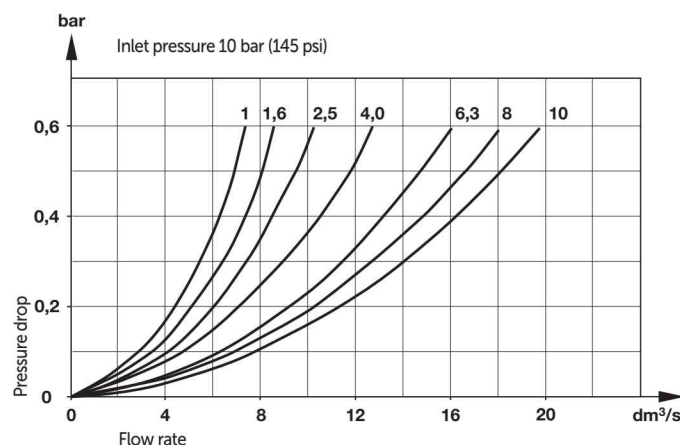
Symbol	Port size	Filter element (µm)	Flow *1) (dm³/s)	Drain	Bowl	Weight (kg)	Model
	G1/8	40	9	Manual	Plastic	0,13	F07-100-M3TG
	G1/4	40	11,5	Manual	Plastic	0,13	F07-200-M3TG
	G1/8	40	9	Automatic	Plastic	0,13	F07-100-A3TG
	G1/4	40	11,5	Automatic	Plastic	0,13	F07-200-A3TG

\*1) Typical flow with 6,3 bar (91 psi) inlet pressure and a 0,3 bar (4,3 psi) droop from set.

### Option selector

Port size	Substitute	Thread form	Substitute
1/8"	1	PTF	A
1/4"	2	ISO G	G
Drain	Substitute	Bowl	Substitute
Automatic	A	Plastic	T
Manual	M	Metal	M
Filter element	Substitute		
5 µm	1		
40 µm	3		

### Flow characteristics Port size 1/4", filter element 40 µm



## Accessories and service kit



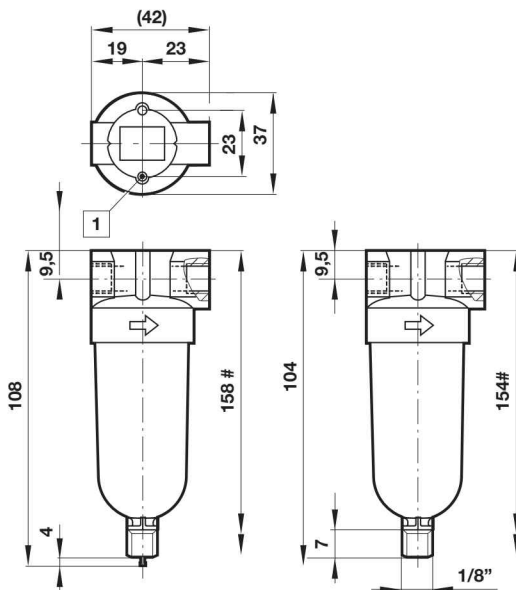
## Service kit

	Service kit manual drain	Service kit automatic drain
5 µm:	F07-KITM05 (5 µm – black)	F07-KITA05 (5 µm – black)
40 µm:	F07-KITM40 (40 µm – green)	F07-KITA40 (40 µm – green)

## Dimensions

### Manual drain

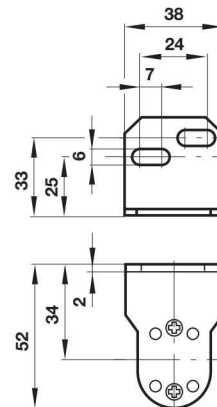
### Automatic drain



# Minimum clearance required to remove bowl  
 1 Mounting holes, Ø 4 mm, 13 mm deep

## Wall mounting bracket

Dimensions in mm  
 Projection/First angle



Use 1/8" (3 mm) screws  
 to mount bracket to wall.

## Warning

These products are intended for use in industrial compressed air systems only. Do not use these products where pressures and temperatures can exceed those listed under »Technical features/ data«.

Before using these products with fluids other than those specified, for non-industrial applications, life-support systems or other applications not within published specifications, consult Norgren Ltd.

Through misuse, age, or malfunction, components used in fluid power systems can fail in various modes.

The system designer is warned to consider the failure modes of all component parts used in fluid power systems and to provide adequate safeguards to prevent personal injury or damage to equipment in the event of such failure.

System designers must provide a warning to end users in the system instructional manual if protection against a failure mode cannot be adequately provided.

System designers and end users are cautioned to review specific warnings found in instruction sheets packed and shipped with these products.