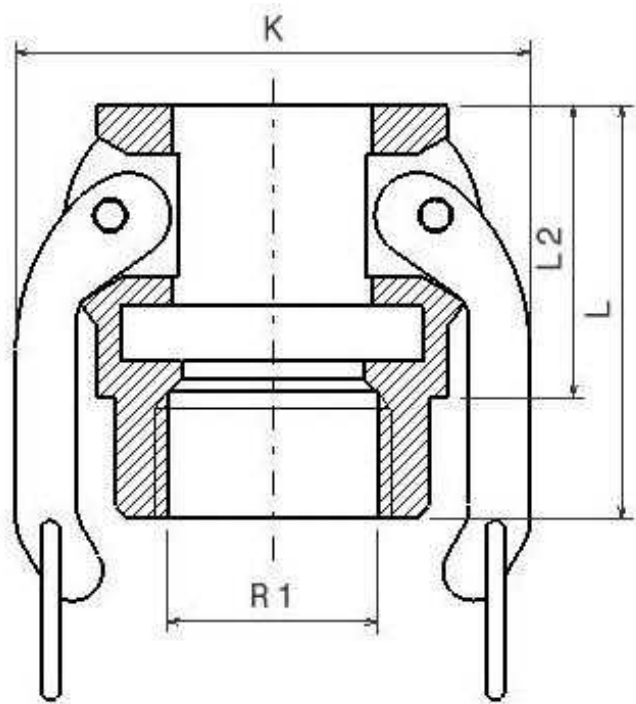


Female Camlock coupling, female BSP threaded
Type D

Stainless Steel AISI 316



Norms: Male thread according to EN10226-1
Female thread according to ISO 228-1
PN: 1/2": 150 PSI --- 3/4"-2": 250 PSI --- 3": 125 PSI --- 4": 100 PSI

Part nº	DN	R1	L	L2	K
ZD012	12	1/2"	43	29	54
ZD015	20	1/2"	52	32	53
ZD020	20	3/4"	52	32	54
ZD025	25	1"	62	40	61
ZD032	32	1"1/4	68	48	79
ZD040	40	1"1/2	71	49	83
ZD050	50	2"	78	54	94
ZD065	65	2"1/2	85	59	109
ZD080	80	3"	90	60	130
ZD100	100	4"	96	62	158

The dimensions in micro-casting parts are approximated in those elements without mechanization.
NBR gasket