

# GREASE AND OIL LUBRICATION PUMPS

## EP-1 PUMP



### KEY FEATURES

A versatile solution for progressive and multi-line systems for most mobile and stationary equipment installations.

Recommended for all climates.

Suitable for all common lubricants (NLGI 000, 00, 0, 1, 2).

Springless pump element with desmodromic drive for highest reliability.

Integrated control unit EP-tronic (optional) with:

- 3 operating modes: time, cycles or revolutions
  - electronic monitoring of grease level, pump function, distributor function, pipe rupture, lubricant feeding
  - selection of operating conditions: light, medium or heavy
  - integrated data logger with diagnosis module
- Perfectly matched installation kits in OE quality.  
Factory installed by leading manufacturers.

### TECHNICAL DATA

#### PUMP

**Metering volume per stroke (= 1 pump revolution) and outlet:** 0.06 to 0.17 cm<sup>3</sup> (depending on pump element)

**Grease output:** adjustable with PE 120 V

**Reservoir capacity:** 1.9/2.5/4.2/8/16 kg reservoir material plastic, transparent

**Operating pressure:** max. 5100 psi (350 bar)

**Pressure limiting valve adjusted to:** max. 4000 psi (280 bar)

**Lubricant:** greases up to NLGI cl. 2 (grease with solid contents only on demand)

**Operating temperature:** -4°F to 158°F (-20°C to 70°C)

**No. of outlets:** max. 6 (3 standard)

**Outlet type:** pipe Ø6 mm or Ø8 mm, both as standard, other Ø available

**Rotation direction of agitator blade:** counterclockwise

**Installation position:** reservoir vertical, as shown

**Degree of protection:** IP65

**Weight:** max. 11.3 lbs (5.1 kg, without pump elements, without grease filling)

#### MOTOR

**Drive:** DC motor

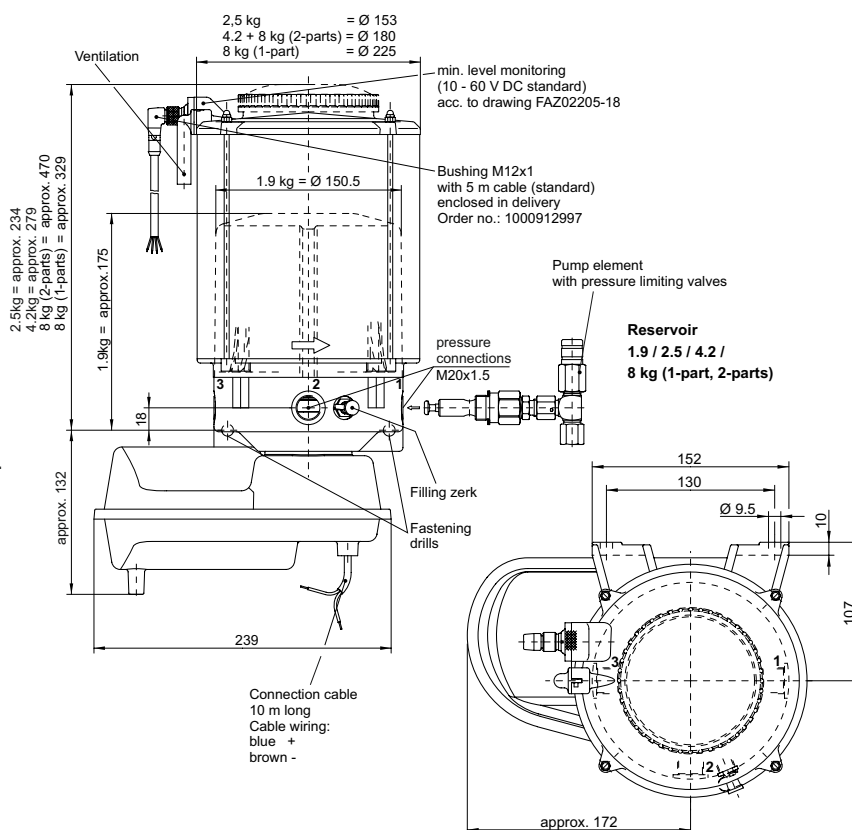
**Operating voltage:** 12 V DC / 24 V DC

**Current consumption:** max. 3.2 A at 24 V DC

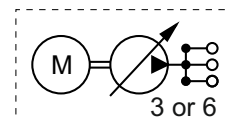
**Speed (= pump revolutions):** 15 r.p.m.

**Note:** The installation of an extra integrated control unit BEKA-troniX1 or EP-tronic is possible on special customer request for this pump\* (see documentation control and monitoring devices); this effects the order no.

\*Please indicate type of control separately for model with integrated control unit.



Base order code: 21...



issue: 10.19EN

Pump elements (see documentation pump elements)		Metering volume cm <sup>3</sup> / stroke and outlet
PE 60	with/without pressure limiting valve	0.06
PE 120		0.12
PE 170		0.17
PE 120 V		max. 0.12 (adjustable)