

R64G - Olympian Plus plug-in system Pressure regulator



- Port size: 1/4" ... 3/4" (ISO G/PTF)
- Non-rising adjusting knob has snap-action lock
- Diaphragm and balanced valve design ensure good regulation characteristics

Technical features

Medium:

Compressed air only

Maximum operating pressure:
17 bar (246 psi)

Pressure range:

(standard)
0,3 ... 10 bar (4 ... 145 psi)
(optional)
0,4 ... 4 bar (5 ... 58 psi),
0,7 ... 17 bar (10 ... 246 psi)

Port sizes:

1/4", 3/8", 1/2" or 3/4"

Gauge port:

1/8 PTF with PTF main ports
Rc1/8 with ISO G main ports

Flow:

See table below

Relieving:

With (standard)
Non-relieving (optional)

Standard compliances:

II 2G Ex h IIC T6 Gb
II 2D Ex h IIIC T85° Db

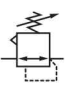
Ambient/Media temperature:

-20° ... +80°C (-4° ... +176°F)
Version with gauge:
-20° ... +65°C (-4° ... +149°F)
Air supply must be dry enough to avoid ice formation at temperatures below +2°C (+35°F).

Materials:

Body and yoke: Zinc alloy
Connection piece: Aluminium
Bonnet: Aluminium
Adjusting knob: Acetal resin
Elastomers: NBR

Technical data, standard models with relieving

| Symbol | Port size | Size | Pressure range (bar) | Flow * (dm³/s) | Adjustment | Weight (kg) | Model |
|---|--------------|-------|----------------------|----------------|------------|-------------|--------------|
|  | G1/4 | — | 0,3 ... 10 | 35 | Knob | 1,63 | R64G-2GK-RMN |
| | G3/8 | — | 0,3 ... 10 | 80 | Knob | 1,61 | R64G-3GK-RMN |
| | G1/2 | Basic | 0,3 ... 10 | 120 | Knob | 1,59 | R64G-4GK-RMN |
| | G3/4 | — | 0,3 ... 10 | 120 | Knob | 1,87 | R64G-6GK-RMN |
| | Without yoke | — | 0,3 ... 10 | | Knob | 1,16 | R64G-NNK-RMN |

* Typical flow with 10 bar (145 psi) inlet pressure, and 6,3 bar (91 psi) set pressure and 1 bar (14.5 psi) drop from set.

Option selector

| Port size | Substitute |
|-------------------------|------------|
| 1/4" | 2 |
| 3/8" | 3 |
| 1/2" | 4 |
| 3/4" | 6 |
| Without yoke | N |
| Thread | Substitute |
| PTF | A |
| ISO G (standard) | G |
| Without yoke (standard) | N |
| Adjustment | Substitute |
| Knob (standard) | K |
| T-bar (0,7 ... 17 bar) | T *2) |

R64G-★ ★ ★ - ★ ★ ★

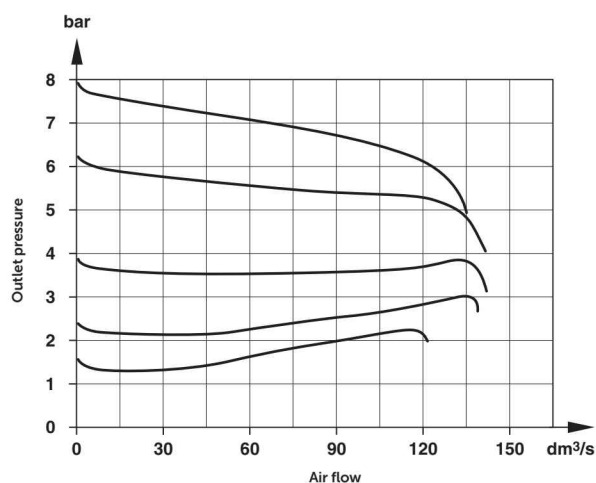
| Gauge | Substitute |
|--------------------------|------------|
| With | G |
| Without (standard) | N |
| Pressure range (bar) *1) | Substitute |
| 0,3 ... 10 (standard) | M |
| 0,3 ... 4 | F |
| 0,7 ... 17 | S *2) |
| Diaphragm | Substitute |
| Relieving (standard) | R |
| Non-relieving | N |

*1) Outlet pressure can be adjusted to pressures in excess of and less than, those specified. Do not use these units to control pressures outside of the specified ranges.

*2) Units with 17 bar (246 psi) outlet pressure range are available only with the T-bar adjustment; therefore substitute T at the 7th digit and S at the 9th position.

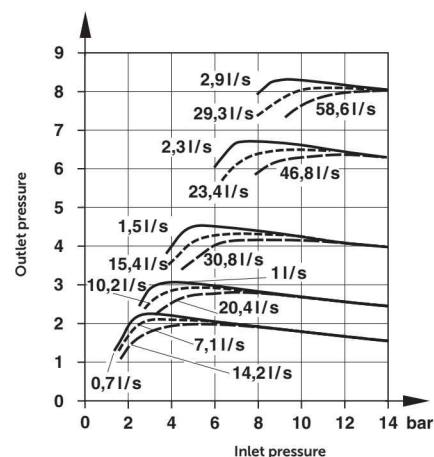
Flow characteristics

Inlet pressure: 10 bar, port size: 1/2"
Pressure range: 0,3 ... 10 bar



Regulating characteristics







Port size: 1/2"









Accessories, service kit and gauges



Accessories

| | Models with G-thread Single yoke | Double yoke | 3/2 Shut-off valve Threaded inlet only | Threaded outlet only | End connector kit | Rear entry bracket kit |
|---------|--|---|---|--|--|--|
| Thread |  5 |  |  |  |  2 |  8 |
| G1/4 | Y64A-2GA-N1N | Y64A-2GA-N2N | T64T-2GB-P1N | T64T-2GC-P1N | — | — |
| G3/8 | Y64A-3GA-N1N | Y64A-3GA-N2N | T64T-3GB-P1N | T64T-3GC-P1N | — | — |
| G1/2 | Y64A-4GA-N1N | Y64A-4GA-N2N | T64T-4GB-P1N | T64T-4GC-P1N | 74505-50 | — |
| G3/4 | Y64A-6GA-N1N* | Y64A-6GA-N2N* | T64T-6GB-P1N | T64T-6GC-P1N | 74505-53 | 18-026-981 |
| 1/4 PTF | Y64A-2AA-N1N | Y64A-2AA-N2N | T64T-2AB-P1N | T64T-2AC-P1N | — | — |
| 3/8 PTF | Y64A-3AA-N1N | Y64A-3AA-N2N | T64T-3AB-P1N | T64T-3AC-P1N | — | — |
| 1/2 PTF | Y64A-4AA-N1N | Y64A-4AA-N2N | T64T-4AB-P1N | T64T-4AC-P1N | 74505-52 | — |
| 3/4 PTF | Y64A-6AA-N1N* | Y64A-6AA-N2N* | T64T-6AB-P1N | T64T-6AC-P1N | 74505-55 | — |

*These yokes are supplied with two end connector kits as standard.

| Bracket mounting | Nut | Tamper resistant cap & seal wire | Yoke connector kit | Porting block | Padlock with two keys |
|---|---|---|---|---|---|
|  |  |  |  |  |  |
| 1 | 4 | 3 | 9 | | |
| 74504-50 | 74502-89 | 4355-51 | 74503-51 | 74507-50 | 0613633 (brass) |

Service kit



Gauges

Center back connection, white face (full technical specification see datasheet 8.900.900)

6

Pressure range
bar *1 MPa psi

| | Ø | Thread size | Model |
|------------------------------|-------|-------------|------------|
| 0 ... 4 0 ... 0,4 0 ... 58 | 50 mm | R1/8 | 18-015-011 |
| 0 ... 10 0 ... 1 0 ... 145 | 50 mm | R1/8 | 18-015-013 |
| 0 ... 25 0 ... 2,5 0 ... 362 | 50 mm | R1/8 | 18-015-014 |

*1) primary scale

Center back connection, black face for North America (full technical specification see datasheet 8.900.900)

6

Pressure range
psig *1 bar MPa

| | Ø | Thread size | Model |
|------------------------------|------------|-------------|------------|
| 0 ... 60 0 ... 4 0 ... 0,4 | 2" (50 mm) | 1/8 NPT | 18-015-202 |
| 0 ... 160 0 ... 11 0 ... 1,1 | 2" (50 mm) | 1/8 NPT | 18-015-204 |
| 0 ... 400 0 ... 28 0 ... 2,8 | 2" (50 mm) | 1/8 NPT | 18-015-206 |

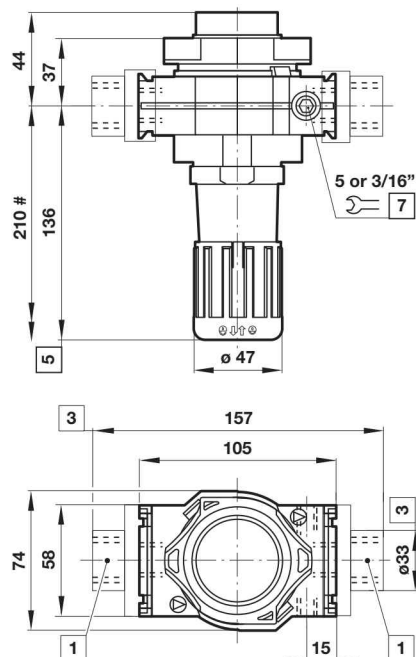
*1) primary scale

Basic dimensions

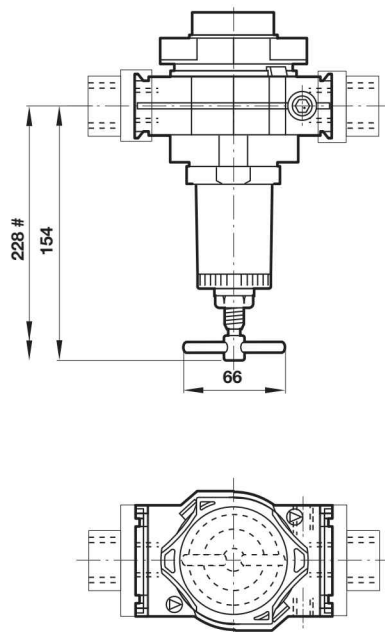
Dimensions in mm
Projection/First angle



Standrad

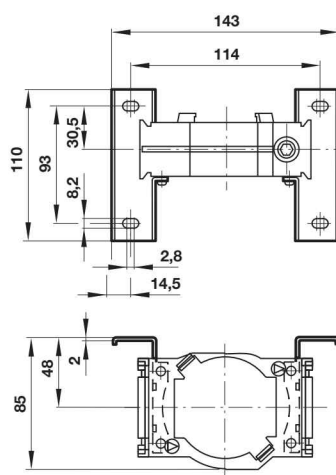


T-bar

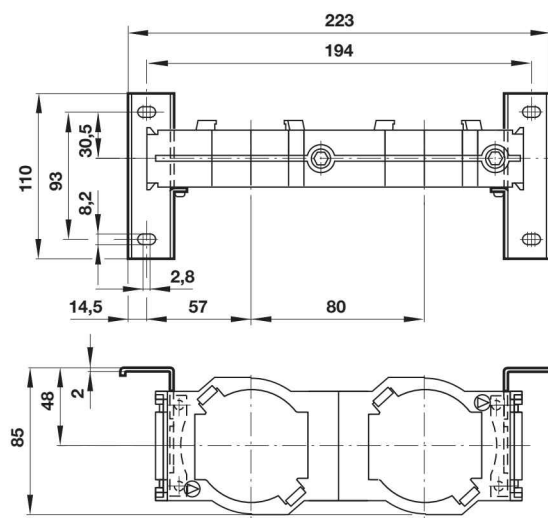


- # Minimum clearance required to remove unit from yoke
- 1 Main ports 1/4", 3/8", 1/2" or 3/4"
 - 3 For main ports 3/4" only
 - 5 Reduces by 4 mm with knob in locked position
 - 7 Gauge port

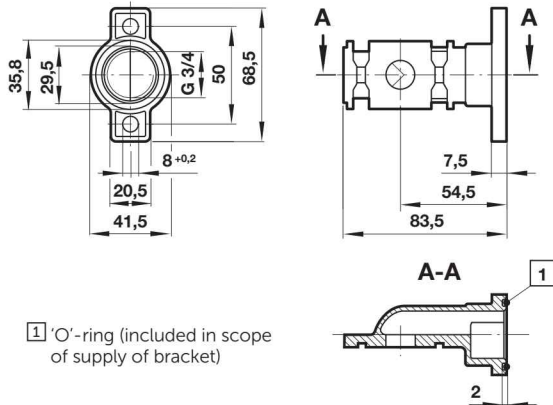
Single yoke with bracket mounting



Double yoke with bracket mounting

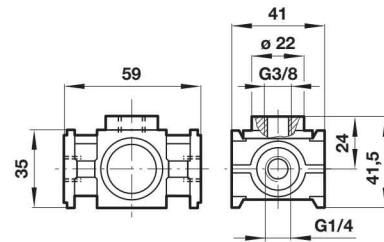


Rear entry bracket 18-026-981



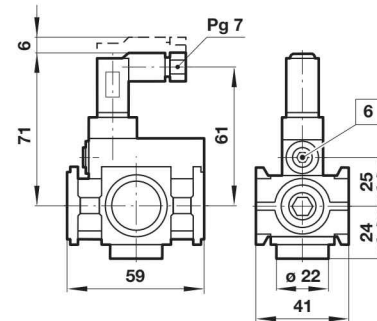
Porting block 74507-50

Dimensions in mm
Projection/First angle



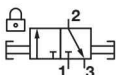
Adjustable pressure switch 4346-99

| | |
|--|------------------------------------|
| Voltage | 24 V d.c./240 V a.c. |
| Current | 0,5 A (d.c.); 5 A (a.c.) |
| Pressure range | 2 ... 10 bar |
| Repeatability | 2% of full set point range at 20°C |
| Average deadband | 0,8 ... 1,7 bar |
| Electrical connection (corresponding to choosen coil) | EN 175301-803 - Form C, 15 mm |
| Degree of protection: | IP65 |
| Adjustable | Standard |
| Material | Body: Aluminium, Elastomers: NBR |

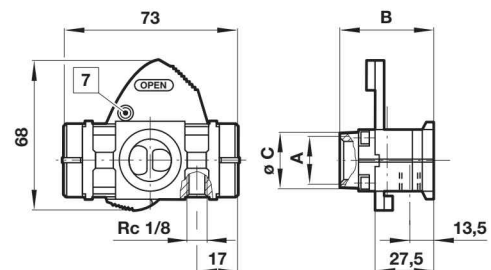


6 Adjusting screw

3/2 Shut-off valve

| Symbol | A | B | ø C | Model |
|---|------|----|-----|--------------|
|  | G1/4 | 48 | 27 | T64T-2G*-P1N |
| | G3/8 | 48 | 27 | T64T-3G*-P1N |
| | G1/2 | 48 | 27 | T64T-4G*-P1N |
| | G3/4 | 51 | 33 | T64T-6G*-P1N |

* B = Threaded inlet only, C = Threaded outlet only



7 Padlock hole 7,5 mm

Warning

These products are intended for use in industrial compressed air systems only. Do not use these products where pressures and temperatures can exceed those listed under »**Technical features/data**«.

Before using these products with fluids other than those specified, for non-industrial applications, life-support systems or other applications not within published specifications, consult Norgren Ltd.

Through misuse, age, or malfunction, components used in fluid power systems can fail in various modes.

The system designer is warned to consider the failure modes of all component parts used in fluid power systems and to provide adequate safeguards to prevent personal injury or damage to equipment in the event of such failure.

System designers must provide a warning to end users in the system instructional manual if protection against a failure mode cannot be adequately provided.

System designers and end users are cautioned to review specific warnings found in instruction sheets packed and shipped with these products.