



-5°C ÷ 70°C



Working pressure:
20 Bar



Compressed air, lubricated
compressed air, gases and
fluids suitable with construction
materials



- Taper gas BSPT ISO 7
from R1/8" to R1/2"
- Parallel gas BSPP ISO 228
from G1/8" to G1/2"

LEVER OPERATION

It is closed and opened by turning the lever
by 1/4 turn to the end of the stroke.



Body: Nickel-plated brass
CW617W UNI-EN 12164
Stem: Nickel-plated brass
CW614N UNI-EN 12164
Nut: Nickel-plated brass
CW614N UNI-EN 12164
Ball: Nickel-plated brass
CW614N UNI-EN 12164
Ball seals: PTFE (Teflon)
Stem sealing ring: NBR 70
Lever: Nylon 66
Cap on lever: Nylon 66 (black)

AVAILABILITY

- Cap on lever available in red, blue, yellow,
green and orange colours.

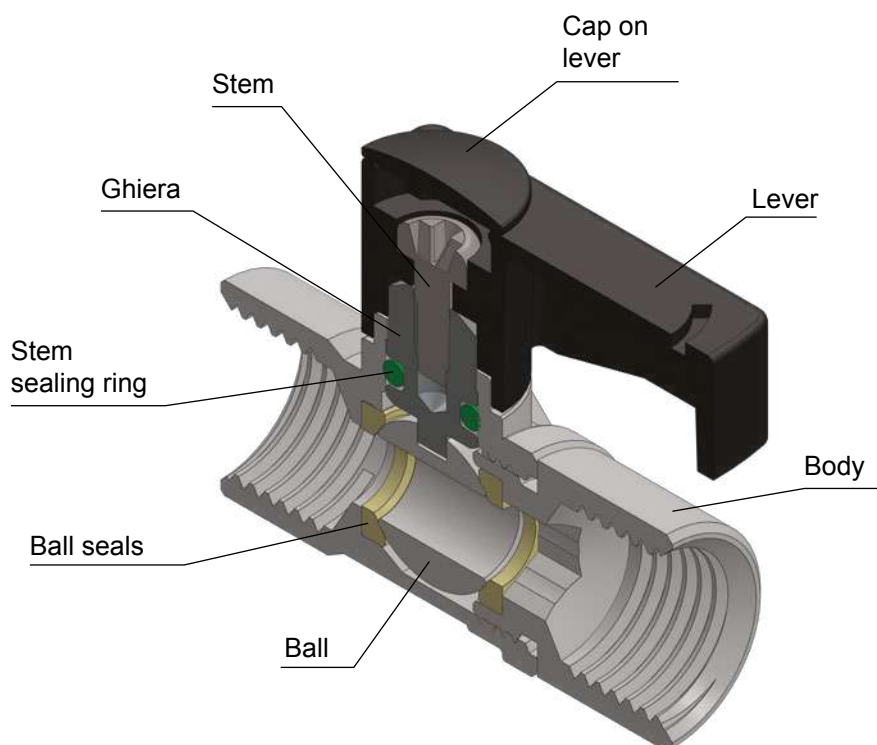


Products in compliance with
EC Regulation 1907/2006



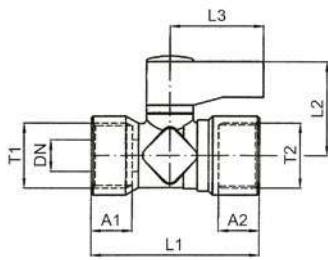
Products in compliance with
the directive EU 2015/863

CONSTRUCTION DETAILS



9142

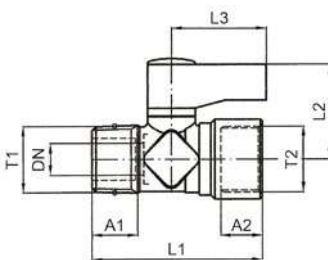
Female micro ball valve BSPP thread



CODE	T1	T2	DN	A1	A2	L1	L2	L3
9142TR18	G 1/8"	G 1/8"	6	8,0	8,0	34,0	23,0	24,0
9142TR14	G 1/4"	G 1/4"	6	9,5	9,5	38,0	23,0	24,0
9142TR38	G 3/8"	G 3/8"	8	10,5	10,5	43,0	24,0	24,0
9142TR12	G 1/2"	G 1/2"	10	12,0	12,0	49,0	27,0	34,0

9162

Micro ball valve, male BSPT & female BSPP threads



CODE	T1	T2	DN	A1	A2	L1	L2	L3
9162TR18	R 1/8"	G 1/8"	6	7,0	8,0	33,0	23,0	24,0
9162TR14	R 1/4"	G 1/4"	6	8,0	9,5	35,0	23,0	24,0
9162TR38	R 3/8"	G 3/8"	8	9,0	10,5	40,0	24,0	24,0
9162TR12	R 1/2"	G 1/2"	10	10,0	12,0	49,0	27,0	34,0

