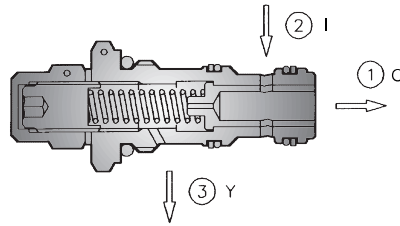
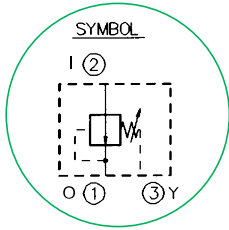


PRESSURE REDUCING VALVE WITH DIRECTLY OPERATED SPOOL

NCS

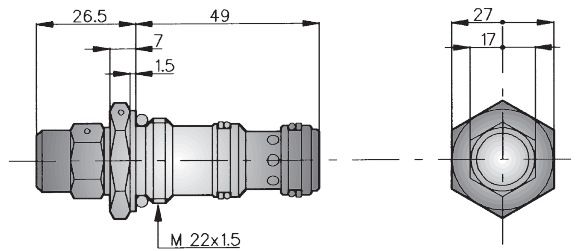
Type PRC 06



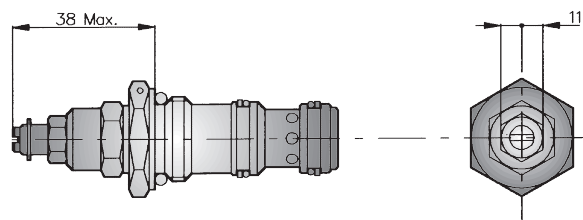
SIZE	06	
NOMINAL PORT SIZE	DN	6
MAX FLOW RATE	l/min	40
	US gpm	10.5
MAX PRESSURE THROUGH INLET ② I	bar	315
	psi	4500
MAX REDUCED PRESSURE THROUGH OUTLET ① O	bar	50
	psi	725
MAX FLOW THROUGH DRAIN PORT ③ Y	l/min	0.6
	US gpm	0.15
CAVITY NUMBER	00.95	0.56
NORMALIZED CAVITY	NCS	06/3
MAX TIGHTENING TORQUE	Nm	50
WEIGHT Kg.	ADJUSTMENT E	0.130
	ADJUSTMENT EN	0.140
	ADJUSTMENT M	0.160
REF		
CAVITY DIMENSIONS	11.450	

DIMENSIONS (mm)

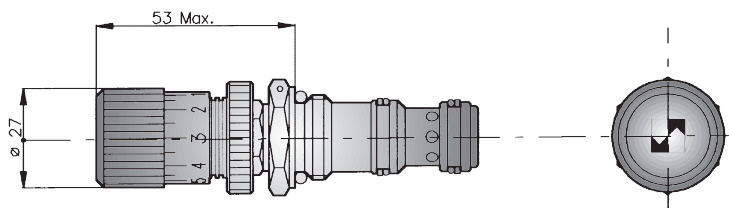
Adjustment E



Adjustment EN

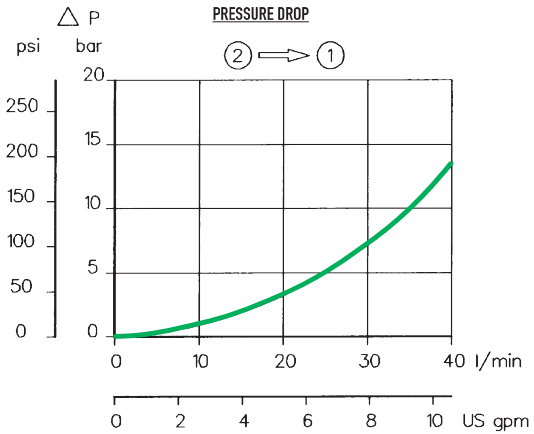
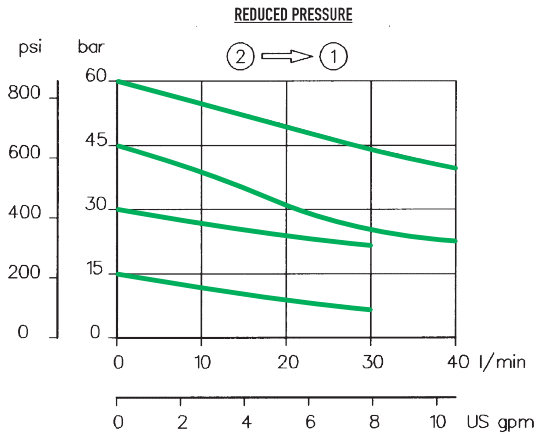


Adjustment M



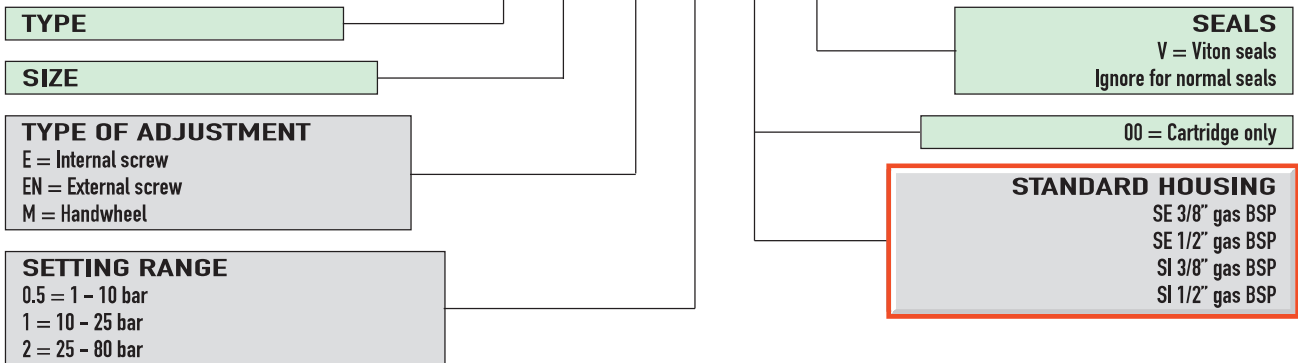
CHARACTERISTIC OPERATING CURVES

Measurements effected at 20°C ambient temperature with mineral oil having viscosity of 26 cSt to 50°C.
 Cartridges only.



EXAMPLE OF ORDER DESIGNATION PRC 06

PRC 06 / EN - 1 - 00 - V



SPARE PARTS

Set of external seals and back-up washers
 (Packs of minimum 10 sets)
 PRC 06 = 230.00.007.0

SPRING ORDER NUMBERS

PRC 06 SPRINGS
 Type 0.5 = 82.62.005.1.9
 Type 1 = 81.62.026.1.9
 Type 2 = 81.62.046.1.3