

## BL64 - Olympian Plus plug-in system Filter/regulators and lubricators

- Port size: 1/4" ... 3/4"  
(ISO G/PTF)
- Complete air processing units pre-assembled, ready to install



### Technical features

|                                                          |                                                                                                                                                                                                     |                                                                                                                                                                                                                            |                                                                                                                                                                                                                                              |
|----------------------------------------------------------|-----------------------------------------------------------------------------------------------------------------------------------------------------------------------------------------------------|----------------------------------------------------------------------------------------------------------------------------------------------------------------------------------------------------------------------------|----------------------------------------------------------------------------------------------------------------------------------------------------------------------------------------------------------------------------------------------|
| <b>Medium:</b><br>Compressed air only                    | <b>Relieving:</b><br>Standard                                                                                                                                                                       | <b>Bowl size (lubricator):</b><br>0,2 litre (7 fluid oz)                                                                                                                                                                   | <b>Materials:</b><br>Body and yoke: Zinc alloy<br>Connection piece: Aluminium<br>Metal bowl: Aluminium<br>Prismatic liquid level indicator: Grilamid<br>Sight dome: transparent PA<br>Element: Sintered bronze or plastic<br>Elastomers: NBR |
| <b>Maximum operating pressure:</b><br>17 bar (246 psi)   | <b>Element:</b><br>40 µm                                                                                                                                                                            | <b>Ambient/Media temperature:</b><br>-20° ... +80°C (-4° ... +176°F)<br>Version with gauge:<br>-20° ... +65°C (-4° ... +149°F)<br>Air supply must be dry enough to avoid ice formation at temperatures below +2°C (+35°F). |                                                                                                                                                                                                                                              |
| <b>Pressure range:</b><br>0,3 ... 10 bar (4 ... 145 psi) | <b>Drain:</b><br>Manual or automatic                                                                                                                                                                |                                                                                                                                                                                                                            |                                                                                                                                                                                                                                              |
| <b>Port sizes:</b><br>G1/4, G3/8, G1/2 or G3/4           | <b>Automatic drain conditions:</b><br>Pressure to close drain:<br>> 0,3 bar (4.3 psi)<br>Pressure to open drain:<br>< 0,2 bar (2.9 psi)<br>Minimum air flow to close drain:<br>0,6 dm³/s (1.3 scfm) |                                                                                                                                                                                                                            |                                                                                                                                                                                                                                              |
| <b>Gauge ports:</b><br>Rc 1/8                            |                                                                                                                                                                                                     |                                                                                                                                                                                                                            |                                                                                                                                                                                                                                              |

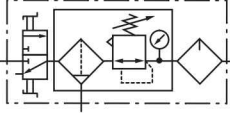
### Please contact IMI Norgren for following options:

|                                                                                          |                                                         |                                |                |
|------------------------------------------------------------------------------------------|---------------------------------------------------------|--------------------------------|----------------|
| <b>Pressure range:</b><br>0,3 ... 4 bar (4 ... 58 psi)<br>0,7 ... 17 bar (2 ... 250 psi) | <b>Port size:</b><br>1/4 PTF, 3/8 PTF, 1/2 PTF, 3/4 PTF | <b>5 µm</b>                    | <b>1 litre</b> |
|                                                                                          | <b>Element:</b>                                         | <b>Bowl size (lubricator):</b> |                |

### Technical data BL64 - standard models; automatic drain

| Symbol                                                                              | Port size | Size  | Pressure range (bar) | Element (µm) | Drain     | Lubricator | Mounting | Gauge | Shut-off valve | Model    |
|-------------------------------------------------------------------------------------|-----------|-------|----------------------|--------------|-----------|------------|----------|-------|----------------|----------|
|  | G1/4      | —     | 0,3 ... 10           | 40           | Automatic | Micro fog  | Bracket  | With  | With           | BL64-201 |
|                                                                                     | G3/8      | —     | 0,3 ... 10           | 40           | Automatic | Micro fog  | Bracket  | With  | With           | BL64-301 |
|                                                                                     | G1/2      | Basic | 0,3 ... 10           | 40           | Automatic | Micro fog  | Bracket  | With  | With           | BL64-401 |
|                                                                                     | G3/4      | —     | 0,3 ... 10           | 40           | Automatic | Micro fog  | Bracket  | With  | With           | BL64-601 |
|                                                                                     | G1/4      | —     | 0,3 ... 10           | 40           | Automatic | Oil fog    | Bracket  | With  | With           | BL64-211 |
|                                                                                     | G3/8      | —     | 0,3 ... 10           | 40           | Automatic | Oil fog    | Bracket  | With  | With           | BL64-311 |
|                                                                                     | G1/2      | Basic | 0,3 ... 10           | 40           | Automatic | Oil fog    | Bracket  | With  | With           | BL64-411 |
|                                                                                     | G3/4      | —     | 0,3 ... 10           | 40           | Automatic | Oil fog    | Bracket  | With  | With           | BL64-611 |
|                                                                                     | G1/4      | —     | 0,3 ... 10           | 40           | Automatic | Micro fog  | —        | With  | With           | BL64-202 |
|                                                                                     | G3/8      | —     | 0,3 ... 10           | 40           | Automatic | Micro fog  | —        | With  | With           | BL64-302 |
|                                                                                     | G1/2      | Basic | 0,3 ... 10           | 40           | Automatic | Micro fog  | —        | With  | With           | BL64-402 |
|                                                                                     | G3/4      | —     | 0,3 ... 10           | 40           | Automatic | Micro fog  | —        | With  | With           | BL64-602 |
|                                                                                     | G1/4      | —     | 0,3 ... 10           | 40           | Automatic | Oil fog    | —        | With  | With           | BL64-212 |
|                                                                                     | G3/8      | —     | 0,3 ... 10           | 40           | Automatic | Oil fog    | —        | With  | With           | BL64-312 |
|                                                                                     | G1/2      | Basic | 0,3 ... 10           | 40           | Automatic | Oil fog    | —        | With  | With           | BL64-412 |
|                                                                                     | G3/4      | —     | 0,3 ... 10           | 40           | Automatic | Oil fog    | —        | With  | With           | BL64-612 |

## Technical data BL64 - standard models, manual drain

| Symbol                                                                           | Port size | Size  | Pressure range (bar) | Element (µm) | Drain  | Lubricator | Mounting | Gauge | Shut-off valve | Model    |
|----------------------------------------------------------------------------------|-----------|-------|----------------------|--------------|--------|------------|----------|-------|----------------|----------|
|  | G1/4      | —     | 0,3 ... 10           | 40           | Manual | Micro fog  | Bracket  | With  | With           | BL64-221 |
|                                                                                  | G3/8      | —     | 0,3 ... 10           | 40           | Manual | Micro fog  | Bracket  | With  | With           | BL64-321 |
|                                                                                  | G1/2      | Basic | 0,3 ... 10           | 40           | Manual | Micro fog  | Bracket  | With  | With           | BL64-421 |
|                                                                                  | G3/4      | —     | 0,3 ... 10           | 40           | Manual | Micro fog  | Bracket  | With  | With           | BL64-621 |
|                                                                                  | G1/4      | —     | 0,3 ... 10           | 40           | Manual | Oil fog    | Bracket  | With  | With           | BL64-231 |
|                                                                                  | G3/8      | —     | 0,3 ... 10           | 40           | Manual | Oil fog    | Bracket  | With  | With           | BL64-331 |
|                                                                                  | G1/2      | Basic | 0,3 ... 10           | 40           | Manual | Oil fog    | Bracket  | With  | With           | BL64-431 |
|                                                                                  | G3/4      | —     | 0,3 ... 10           | 40           | Manual | Oil fog    | Bracket  | With  | With           | BL64-631 |
|                                                                                  | G1/4      | —     | 0,3 ... 10           | 40           | Manual | Micro fog  | —        | With  | With           | BL64-222 |
|                                                                                  | G3/8      | —     | 0,3 ... 10           | 40           | Manual | Micro fog  | —        | With  | With           | BL64-322 |
|                                                                                  | G1/2      | Basic | 0,3 ... 10           | 40           | Manual | Micro fog  | —        | With  | With           | BL64-422 |
|                                                                                  | G3/4      | —     | 0,3 ... 10           | 40           | Manual | Micro fog  | —        | With  | With           | BL64-622 |
|                                                                                  | G1/4      | —     | 0,3 ... 10           | 40           | Manual | Oil fog    | —        | With  | With           | BL64-232 |
|                                                                                  | G3/8      | —     | 0,3 ... 10           | 40           | Manual | Oil fog    | —        | With  | With           | BL64-332 |
|                                                                                  | G1/2      | Basic | 0,3 ... 10           | 40           | Manual | Oil fog    | —        | With  | With           | BL64-432 |
|                                                                                  | G3/4      | —     | 0,3 ... 10           | 40           | Manual | Oil fog    | —        | With  | With           | BL64-632 |

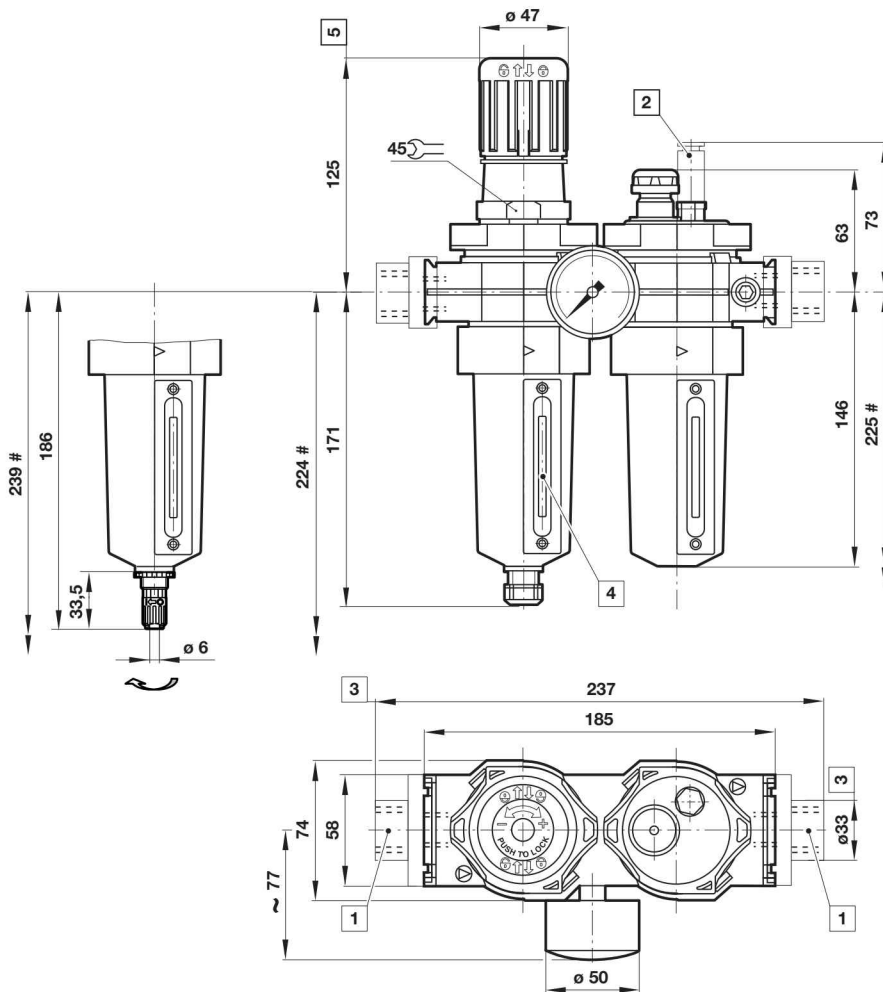
## Accessories

|         | 3/2 Shut-off valve<br>Threaded inlet only                                           | Threaded outlet only                                                                | End connector<br>kit                                                                | Rear entry<br>bracket kit                                                           |
|---------|-------------------------------------------------------------------------------------|-------------------------------------------------------------------------------------|-------------------------------------------------------------------------------------|-------------------------------------------------------------------------------------|
| Thread  |  |  |  |  |
| G1/4    | T64T-2GB-P1N                                                                        | T64T-2GC-P1N                                                                        | —                                                                                   | —                                                                                   |
| G3/8    | T64T-3GB-P1N                                                                        | T64T-3GC-P1N                                                                        | —                                                                                   | —                                                                                   |
| G1/2    | T64T-4GB-P1N                                                                        | T64T-4GC-P1N                                                                        | 74505-50                                                                            | —                                                                                   |
| G3/4    | T64T-6GB-P1N                                                                        | T64T-6GC-P1N                                                                        | 74505-53                                                                            | 18-026-981                                                                          |
| 1/4 PTF | T64T-2AB-P1N                                                                        | T64T-2AC-P1N                                                                        | —                                                                                   | —                                                                                   |
| 3/8 PTF | T64T-3AB-P1N                                                                        | T64T-3AC-P1N                                                                        | —                                                                                   | —                                                                                   |
| 1/2 PTF | T64T-4AB-P1N                                                                        | T64T-4AC-P1N                                                                        | 74505-52                                                                            | —                                                                                   |
| 3/4 PTF | T64T-6AB-P1N                                                                        | T64T-6AC-P1N                                                                        | 74505-55                                                                            | —                                                                                   |

| Quick fill device                                                                   | Tamper resistant<br>cap & seal wire                                                 | Yoke connector kit                                                                  | Porting block                                                                        | Padlock with<br>two keys                                                              |
|-------------------------------------------------------------------------------------|-------------------------------------------------------------------------------------|-------------------------------------------------------------------------------------|--------------------------------------------------------------------------------------|---------------------------------------------------------------------------------------|
|  |  |  |  |  |
| 18-011-024                                                                          | 4355-51                                                                             | 74503-51                                                                            | 74507-50                                                                             | 0613633 (brass)                                                                       |

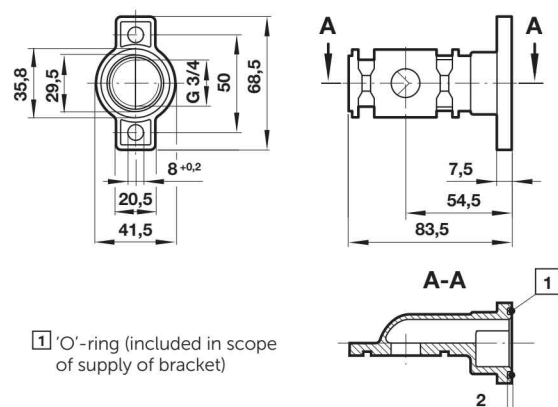
## Basic dimensions

Dimensions in mm  
Projection/First angle



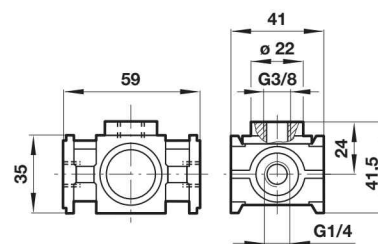
- # Minimum clearance required to remove bowl
- 1 Main ports 1/4", 3/8", 1/2" or 3/4"
  - 2 Quick fill device
  - 3 For main ports 3/4" only
  - 4 Sight glass
  - 5 Reduces by 4 mm with knob in locked position

## Rear entry bracket 18-026-981



## Porting block 74507-50

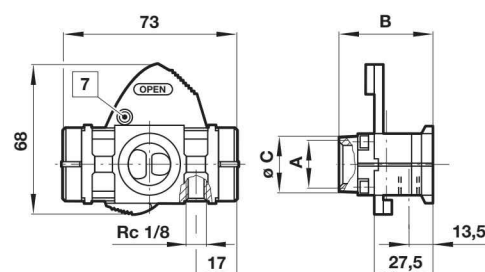
Dimensions in mm  
Projection/First angle



## 3/2 Shut-off valve

| Symbol                                                                           | A    | B  | ø C | Model        |
|----------------------------------------------------------------------------------|------|----|-----|--------------|
|  | G1/4 | 48 | 27  | T64T-2G*-P1N |
|                                                                                  | G3/8 | 48 | 27  | T64T-3G*-P1N |
|                                                                                  | G1/2 | 48 | 27  | T64T-4G*-P1N |
|                                                                                  | G3/4 | 51 | 33  | T64T-6G*-P1N |

\* B = Threaded inlet only, C = Threaded outlet only



7 Padlock hole ø7,5 mm

## Warning

These products are intended for use in industrial compressed air systems only. Do not use these products where pressures and temperatures can exceed those listed under

»Technical features/data«.

Before using these products with fluids other than those specified, for non-industrial applications, life-support systems or other applications not within published specifications, consult Norgren.

Through misuse, age, or malfunction, components used in fluid power systems can fail in various modes.

The system designer is warned to consider the failure modes of all component parts used in fluid power systems and to provide adequate safeguards to prevent personal injury or damage to equipment in the event of such failure.

System designers must provide a warning to end users in the system instructional manual if protection against a failure mode cannot be adequately provided.

System designers and end users are cautioned to review specific warnings found in instruction sheets packed and shipped with these products.