

## 84180/84380 2/2-way piston seat valves

- Port size: DN 2 ... 10, G1/8 ... 1/2 (ISO G/NPT)
- Compact miniature actuator ø 30 mm
- Actuator may be rotated 360°
- Suitable for contaminated process fluid
- Suitable for vacuum up to max. 90%
- Reversed flow direction optional
- High flow rate
- Valve operates without pressure differential
- Clip angle M5 standard
- International approvals



### Technical features

**Medium:**  
Neutral, aggressive gases and liquids up to 600 mm<sup>2</sup>/s

**Pilot fluid:**  
Neutral gases max. +60°C (+140°F)

**Switching function:**  
Normally closed

**Operation:**  
Pressure actuated by external fluid

**Mounting position:**  
Optional

**Flow direction:**  
Determined

**Port size:**  
G1/8, G1/4, G3/8, G1/2, 1/8 NPT, 1/4 NPT, 3/8 NPT, 1/2 NPT

**Pilot connection:**  
M5

**Operating pressure:**  
0 ... 25 bar (0 ... 362 psi)

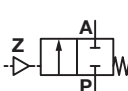
**Pilot pressure:**  
4 ... 10 bar (58 ... 145 psi)

**Fluid temperature:**  
–10 ... +90°C (+14 ... +194°F)

**Ambient temperature:**  
–10 ... +60°C (+14 ... +140°F)

**Material:**  
Flow fluid range:  
Body: Brass (CW617N)  
Seals: NBR  
Seat seal: PTFE  
Internal parts: Stainless steel/Brass  
Seal packing: PTFE/NBR self-adjustable  
Pilot fluid range:  
Body: Brass  
Seals: NBR, Seat seal: PTFE  
Internal parts: Stainless steel/Brass

### Technical data – standard models

Symbol	Port size	Orifice (mm)	Flow kv value *1) (m <sup>3</sup> /h)	Pilot pressure (bar)	Operating pressure *2) (bar) (psi)		Weight (kg)	Model
	G1/8	2	0,12	4 ... 10	0 ... 25	0 ... 362	0,35	8418800.0000.00000
	1/8 NPT	2	0,12	4 ... 10	0 ... 25	0 ... 362	0,35	8438800.0000.00000
	G1/4	4	0,35	4 ... 10	0 ... 25	0 ... 362	0,33	8418020.0000.00000
	1/4 NPT	4	0,35	4 ... 10	0 ... 25	0 ... 362	0,33	8438020.0000.00000
	G3/8	6	0,6	4 ... 10	0 ... 20	0 ... 290	0,32	8418140.0000.00000
	3/8 NPT	6	0,6	4 ... 10	0 ... 20	0 ... 290	0,32	8438140.0000.00000
	G1/2	10	1,8	4 ... 10	0 ... 8	0 ... 116	0,47	8418260.0000.00000
	1/2 NPT	10	1,8	4 ... 10	0 ... 8	0 ... 116	0,47	8438260.0000.00000

\*1) Cv-value (US) ≈ kv value x 1,2

\*2) For gases and liquid fluids up to 600 mm<sup>2</sup>/s (cSt)

Option selector

84★★.★★★.0000.00000

Thread form	Substitute
ISO G	18
NPT	38
Port size	Substitute
1/8	800
1/4	020
3/8	140
1/2	260

Further versions on request!

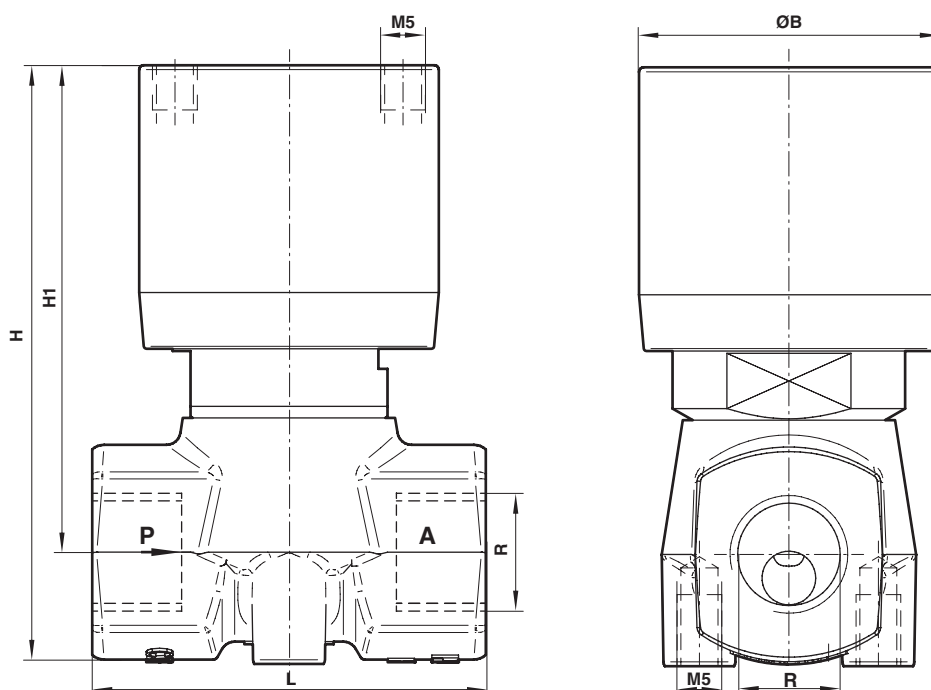
## Dimensions

G1/8 ... 1/2

1/8 ... 1/2 NPT

Dimensions in mm

Projection/first angle



Port size R	Ø B	H	H1	L	Model
G1/8	34	65	53	44	8418800.0000.00000
1/8 NPT	34	65	53	44	8438800.0000.00000
G1/4	34	65	53	44	8418020.0000.00000
1/4 NPT	34	65	53	44	8438020.0000.00000
G3/8	34	65	53	44	8418140.0000.00000
3/8 NPT	34	65	53	44	8438140.0000.00000
G1/2	34	81	67	60	8418260.0000.00000
1/2 NPT	34	81	67	60	8438260.0000.00000

### Note to Pressure Equipment Directive (PED):

The valves of this series up to and including DN 25 (G1) are according to Art. 4 § 3 of the Pressure Equipment Directive (PED) 2014/68/EU. This means interpretation and production are in accordance to engineers practice wellknown in the member countries. The CE-sign at the valve does not refer to the PED. Thus the declaration of conformity is not longer applicable for this directive.

### For valves > DN 25 (G1) Art. 4 § (1) Letter d) applies:

The basic requirements of the Enclosure I of the PED must be fulfilled. The CE-sign at the valve includes the PED. A certificate of conformity of this directive will be available on request.

### Note to Electromagnetic Compatibility Guideline (EEC):

The valves shall be provided with an electrical circuit which ensures the limits of the harmonised standards EN 61000-6-3 and EN 61000-6-1 are observed, and hence the requirements of the Electromagnetic Compatibility Guideline (2014/30/EU) satisfield.