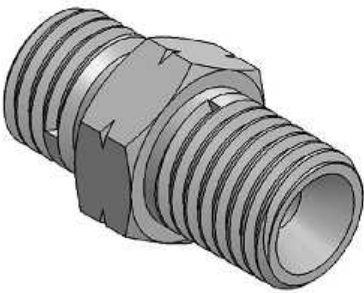
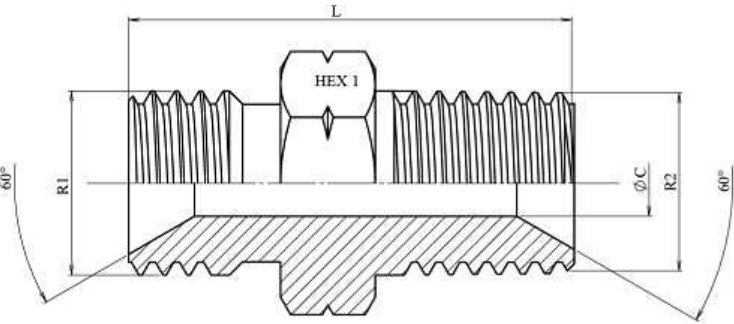


Adaptor BSP male (60°)-NPT male

Carbon steel

1/1



| Part nº | R1 | R2 | L | HEX 1 | ØC |
|---------|-----------|-----------|------|-------|------|
| S101402 | 1/8" BSP | 1/8" NPT | 23,5 | 12 | 3,5 |
| S101404 | 1/4" BSP | 1/4" NPT | 30,5 | 14 | 6 |
| S101406 | 3/8" BSP | 3/8" NPT | 32 | 14 | 8 |
| S101408 | 1/2" BSP | 1/2" NPT | 40,5 | 22 | 11 |
| S101412 | 3/4" BSP | 3/4" NPT | 44 | 27 | 16 |
| S101416 | 1" BSP | 1" NPT | 52 | 36 | 22 |
| S101420 | 1"1/4 BSP | 1"1/4 NPT | 56 | 46 | 28,5 |
| S101424 | 1"1/2 BSP | 1"1/2 NPT | 59 | 50 | 33 |
| S101432 | 2" BSP | 2" NPT | 66 | 60 | 46 |