

GREASE LUBRICATION PUMPS GIGA PLUS PUMP



TECHNICAL DATA PUMP

Metering volume per stroke (= 1 pump revolution) and outlet: see table (depending on pump element)
Grease output: 0.12 or 0.25 cm³ / stroke and outlet
Reservoir capacity: 3.3 / 5.7 / 14.2 kg
(Reservoir / recommended usable volume: 4 l / 3.5 l; 8 l / 6 l; 16 l / 15 l)
Material: plastic, transparent (UV-resistant)
Housing material: aluminum
Other pump components: zinc-nickel coating acc. to DIN 50979
Operating pressure: max. 4300 psi (300 bar)
Pressure limiting valve adjusted to: 4000 psi (280 bar)
Lubricant: greases up to NLGI cl. 2 (grease with solid contents on request)
Operating temperature: -22°F to 158°F (-30°C to 70°C)
No. of outlets: max. 3
Outlet type: see order code
Rotation direction of agitator blade: clockwise
Installation position: reservoir vertical as shown
Degree of protection: IP 65
Weight: for 4l reservoir: approx. 24 lbs (11 kg)
 for 8l reservoir: approx. 26 lbs (12 kg)
 for 16l reservoir: approx. 31 lbs (14 kg)
 (without pump elements, without grease filling - depending on configuration)

MOTOR

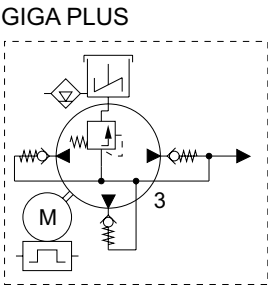
Drive: DC motor or AC motor
Operating voltage: 24 V DC or 100 - 250 V AC (50 - 60 Hz)
Current consumption: max. 3.8 A at 24 V DC
Rotational speed (= pump revolutions): 17 r.p.m.
Control with or without control unit integrated control unit (optional):
 GIGA-tronic or GIGA-multitronic
Voltage connection without control unit: bayonet plug set, 7 pins with 2-core connection line, length 10 m
Voltage connection with GIGA-tronic: bayonet plug set, 7 pins with 5-core connection line, length 10 m
Voltage connection with GIGA-tronicS1: bayonet plug set, 7 pins with 2-core connection line, length 5 m (12V) / 10 m (24V)
Voltage connection with GIGA-multitronic: bayonet plug set, 7 pins with 7-core connection line, length 10 m
Additional connections (M12x1): The cables for connection to additional connections are not included in the delivery (see parts catalog, 3. Pump accessories), cube plug

Base order code: 2172...

KEY FEATURES

- Electric powered pump for central lubrication
 Full range of electric auto-lube solutions:
- Reservoirs from 3.3 kg up to 14,2 kg
 - Delivery rate:
 GIGA PLUS max. 0.25 cm³/ stroke and outlet
 (all three outlets combined then add up to max. 0.75 cm³/ stroke and outlet)
 - Single-line, dual-line, sectional and progressive systems
- Intelligent lubrication:
- Controlled flow rates for selected zones
 - Optical monitoring, precise metering
 - Choice of control systems

Pump Series	Pump elements	Metering volume cm³ / stroke and outlet
GIGA PLUS	PE 120 G	0.12
	PE 250 G	0.25

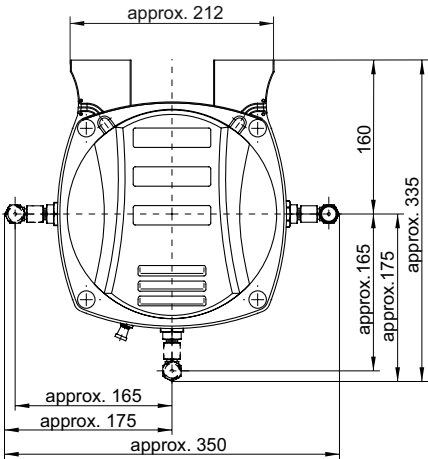
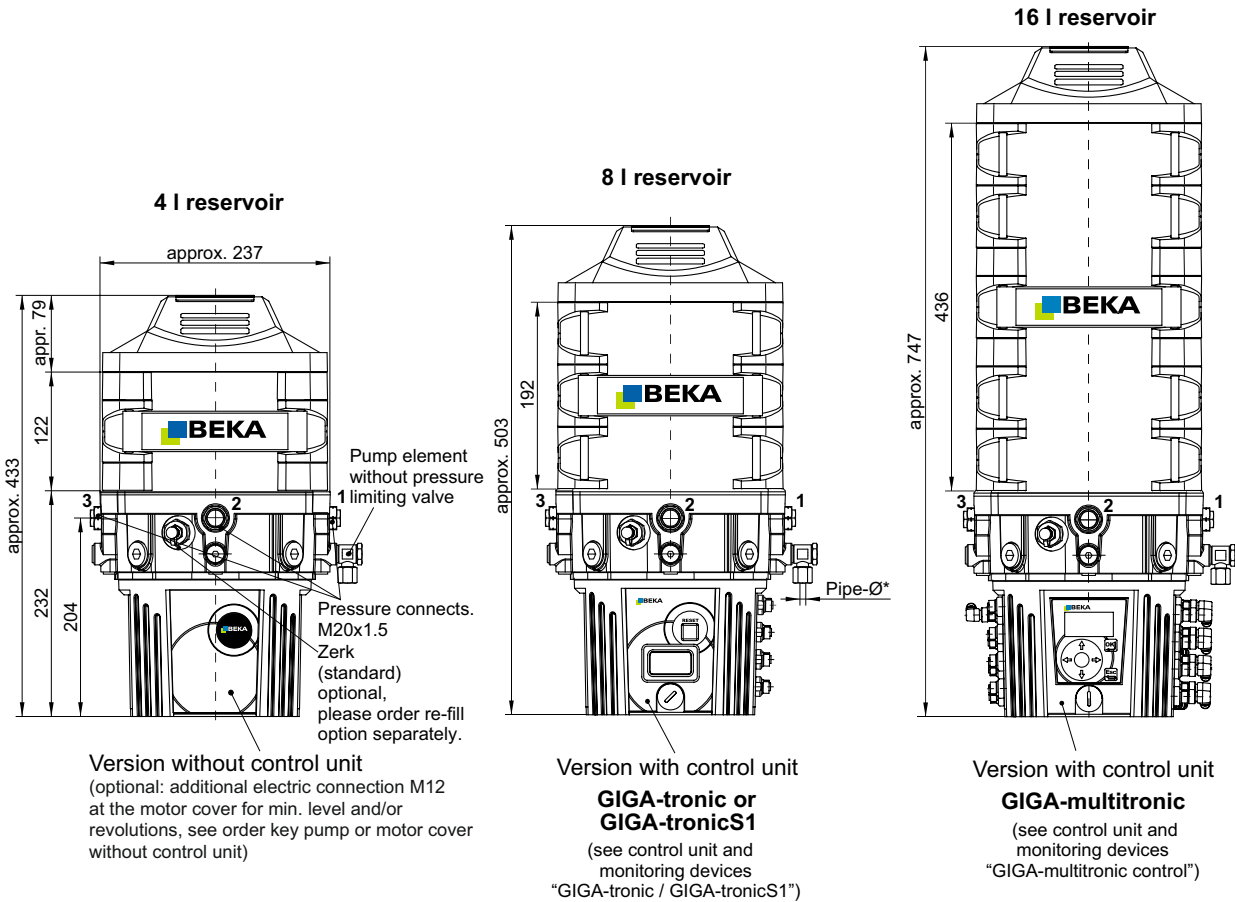


issue: 10.19EN

1090200670

GREASE LUBRICATION PUMPS GIGA PLUS PUMP

TECHNICAL DRAWINGS



* pipe diameters: 6, 8 and 10, and threads: G1/4 innerØ, M14x1.5, outerØ

issue: 10.19EN