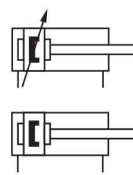


KM/8000/M, ISO cylinder (stainless steel) Magnetic piston, double acting

- Ø 12 ... 25 mm
- High corrosion and acid resistance
- Magnetic piston as standard
- Conforming to ISO 6432
- Suitable for applications in the Food Industry
- Buffer or adjustable cushioning
- Nose mounting nut and piston rod locknut as standard



Technical features

Medium:
Compressed air, filtered, lubricated or non-lubricated

Standard:
ISO 6432

Operation:
Double acting with magnetic piston and buffer or adjustable cushioning

Operating pressure:
1 ... 10 bar (14 ... 145 psi)

Cylinder diameters:
12, 16, 20, 25 mm (buffer)
20, 25 mm (adjustable cushioning)

Strokes:
See page below

Non-standard strokes:
up to 500 mm max. on request

Operating temperature:
-5 ... +80°C max. (+23 ... +176°F)
Air supply must be dry enough to avoid ice formation at temperatures below +2 °C (+35 °F).

Materials:
Cylinder barrel: X5 Cr Ni 18 10 (1.4301; AISI 304)
End covers: X10 Cr Ni S 18 9 (1.4305; AISI 303)
Piston rod: X10 Cr Ni S 18 9 (1.4305; AISI 303)
Piston: POM
Buffer: PUR
Piston rod seal: PUR
Piston and cushion seal: NBR
'O'-rings: NBR

Technical data

Cylinder Ø (mm)	12	16	20	25
Port size	M5	M5	G1/8	G1/8
Piston rod Ø (mm)	6	6	8	10
Piston rod thread	M6	M6	M6	M10x1,25
Cushion length mm	-	-	19	19
Theoretical thrusts at 6 bar outstroke (N)	67,8	120	188	294
Theoretical thrusts at 6 bar instroke (N)	51	104	158	247
Air consumption at 6 bar outstroke (l/cm)	0,008	0,014	0,022	0,035
Air consumption at 6 bar instroke (l/cm)	0,006	0,013	0,019	0,028

Standard strokes with buffer cushioning

Cylinder Ø (mm)	Stroke length (mm)									
	10	25	40	50	80	100	125	160	200	250
12	•	•	•	•	•	•	•	•	•	–
16	•	•	•	•	•	•	•	•	•	–
20	•	•	•	•	•	•	•	•	•	•
25	•	•	•	•	•	•	•	•	•	•

with adjustable cushioning

Cylinder Ø (mm)	Stroke length (mm)									
	10	25	40	50	80	100	125	160	200	250
20	–	•	–	•	•	•	•	•	•	•
25	–	•	–	•	•	•	•	•	•	•

Additional ISO 15552 Cylinder ranges (Cylinder ranges in the red frame are shown in this data sheet.)

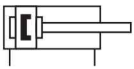
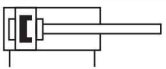
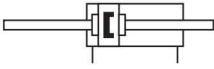
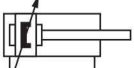


Symbol	Profile barrel	Round Barrel	Industrial Automation	Food & Beverage	Automotive	ATEX II 2GD	Rail **1)	CE-marked	ø (mm)	Range	Description	Datasheet
		•	•		•				Ø 10 ... 25	RM/8000/M	Double Acting Cylinder ISO 6432	de_1_5_021_RM_8000 de_1_5_022_RM_8000_M_EX
		•	•	•	•				Ø 12 ... 25	KM/8000/M	Double Acting Cylinder ISO 6432	de_1_5_025_KM_8000_M de_1_5_026_KM_8000_M_EX
		•	•		•				Ø 32 ... 100	RM/55401/M	Double Acting Cylinder	de_1_5_073_RM_55401
		•	•	•	•				Ø 32 ... 125	KM/55001/M	Double Acting Cylinder	de_1_5_077_KM_55001_M
		•	•		•				Ø 8 ... 63	RT/57200/M	Double Acting Cylinder	de_1_5_041_RT_57200_M_RM_57200_M de_1_5_042_RT_57200_M_EX
		•	•		•				Ø 25 & 40	VSM/55600/N2	Double Acting Cylinder with hollow piston rod	de_1_5_063_VSM_55600_N2
		•	•		•				Ø 10 ... 25	RM/28000/M	Single Acting Cylinder ISO 6432	de_1_4_031_RM_28000_M
		•	•		•				Ø 8 ... 40	RT/57100/M RT/57300/M	Single Acting Cylinder	de_1_4_051_RT_57100_M

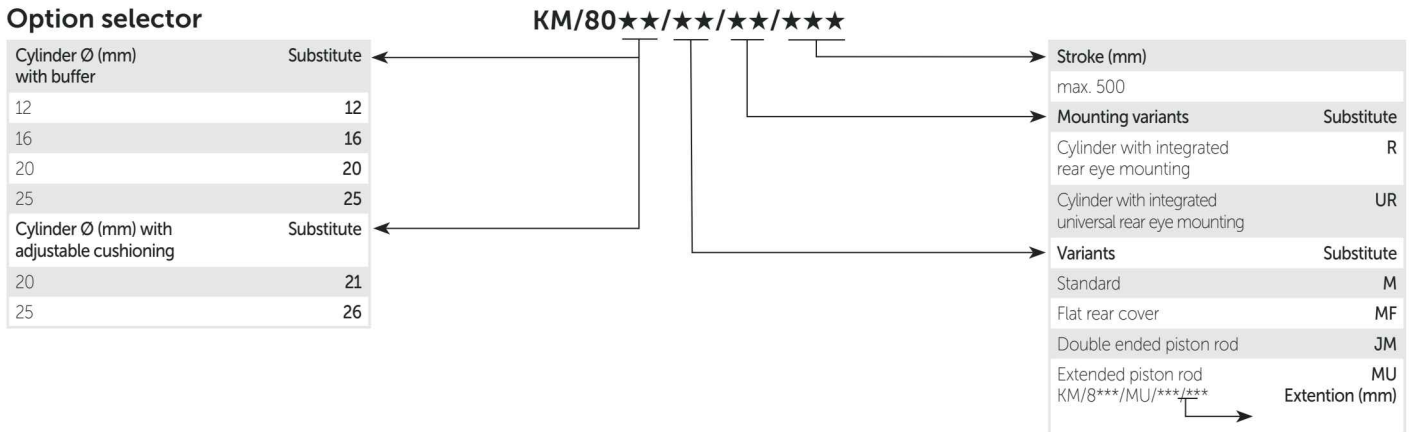
• Range available. For additional information please contact the technical service or <http://www..com>

*1) Rail Cylinder Shock and vibration tested to EN 61373 Category 1; Class A + B

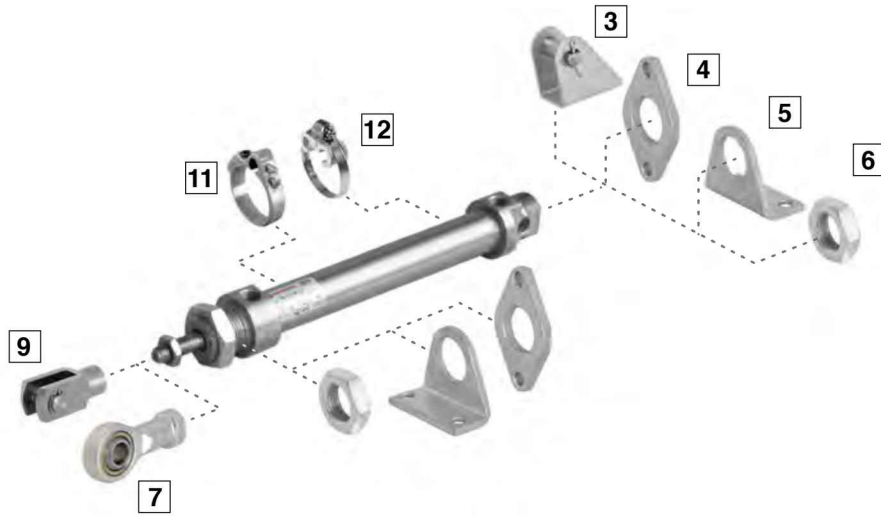
Cylinder variants

Symbol	Model magnetic piston	Description	Drawing
			Page
	KM/8000/M	Standard cylinder with integral eye mounting	4
	KM/8000/MF	Cylinder with flat rear cover	4
	KM/802./M/R	Cylinder Ø 20 & 25 mm with rear eye mounting	5
	KM/802./M/UR	Cylinder Ø 20 & 25 mm with universal rear eye mounting	5
	KM/8000/MU	Cylinder with extended piston rod piston rod extension 75 mm: KM/8***/*U/stroke/75	4
	KM/8000/JM	Cylinder with double ended piston rod (Ø 16 to 25 mm)	4
	KM/802./M	Cylinder Ø 20 & 25 mm with adjustable cushioning	4
	KM/802./M/R	Cylinder Ø 20 & 25 mm with adjustable cushioning and rear eye mounting	5
	KM/802./M/UR	Cylinder Ø 20 & 25 mm with adjustable cushioning and universal rear eye mounting	5

Option selector



Mountings



Materials of mountings and accessories standard cylinder

Position	Style	Stainless steel	Position	Style	Stainless steel
3	L	Rear hinge mounting: X 5 Cr Ni 18 10 (1.4301; AISI 304), bolt: X 10 Cr Ni S 18 9 (1.4305; AISI 303), eyebolt: X 10 Cr Ni S 18 9 (1.4305; AISI 303)	7	UF	Body: X 5 Cr Ni 18 10 (1.4301; AISI 304), Inner ring: X 105 Cr Co 18-2 (1.4528), Outer ring: X 10 Cr Ni S 18 9 (1.4305; AISI 303)
4	B, G	Flange mounting: X 5 Cr Ni 18 10 (1.4301; AISI 304)	9	F	Piston rod clevis mounting: X 10 Cr Ni S 18 9 (1.4305; AISI 303), bolt: X 10 Cr Ni S 18 9 (1.4305; AISI 303), eyebolt: X 10 Cr Ni S 18 9 (1.4305; AISI 303)
5	C	Foot mounting: X 5 Cr Ni 18 10 (1.4301; AISI 304)	11 & 12	Bracket for switches	Body POM, screws stainless steel
6	N	Nose nut: X 10 Cr Ni S 18 9 (1.4305; AISI 303)			

Model	B, G	C	F	L	N	UF
Ø	4 Page 6	5 Page 6	9 Page 6	3 Page 6	6 Page 6	7 Page 6
12	M/P72405	M/P72403	KQM/8012/25	KQM/8012/24	M/P72398	KQM/8012/32
16	M/P72405	M/P72403	KQM/8012/25	KQM/8012/24	M/P72398	KQM/8012/32
20	M/P72406	M/P72404	KQM/8020/25	KQM/8020/24	M/P72399	KQM/8020/32
25	M/P72406	M/P72404	KQM/55433/25	KQM/8020/24	M/P72399	KQM/8032/32

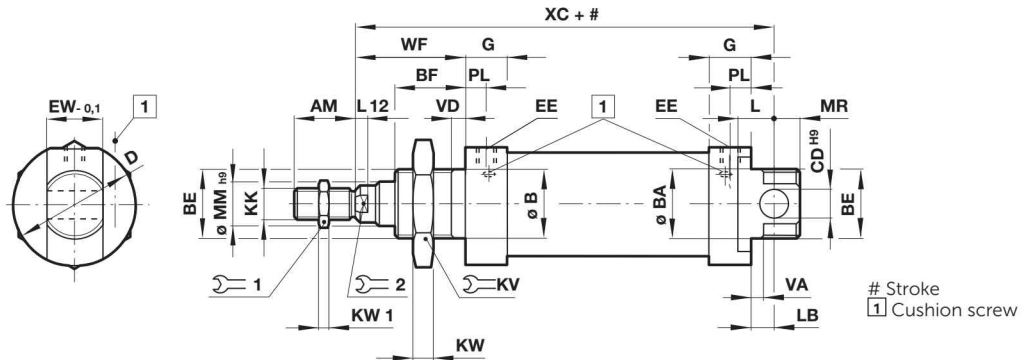
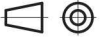
Model	Switch mounting brackets >15 mm stroke	<15 mm stroke	Magnetically operated switches
Ø	11 Page 7	12 Page 7	Page 7 ... 10
12	QM/33/012/22	QM/33/016/23	
16	QM/33/016/22	QM/33/016/23	
20	QM/33/020/22	QM/33/020/23	
25	QM/33/025/22	QM/33/025/23	

Basic dimensions

KM/8000/M – Cylinder with buffercushioning

KM/8021/M & KM/8026/M – Cylinder with adjustable cushioning

Dimensions in mm
Projection/First angle



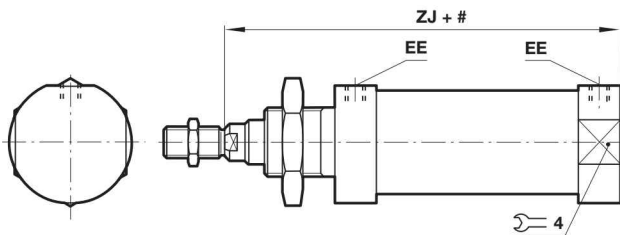
Stroke
1 Cushion screw

Ø	AM	Ø B/BA	BE	BF	Ø CD H9	Ø D	EE	EW-0,1	G	KK		KW	KW1	Model
12	16	16	M16x1,5	17	6	20	M5	11,9	9,5	M6	22	5	3	KM/8012/M/*
16	16	16	M16x1,5	17	6	20	M5	11,9	9,5	M6	22	5	3	KM/8016/M/*
20	20	22	M22x1,5	20	8	30	G1/8	15,9	15	M8	27	8	4	KM/8020/M/*
25	22	22	M22x1,5	22	8	30	G1/8	15,9	15	M10x1,25	27	8	5	KM/8025/M/*
Ø	L	L12	LB	Ø MM h9	MR	PL		WF	VA/VD	XC	at 0 mm	per 25 mm	Model	
12	9	3	3	6	8	5,5	10	5	22	2	75	0,116 kg	0,011 kg	KM/8012/M/*
16	9	3	4	6	7	5,5	10	5	22	2	82	0,137 kg	0,012 kg	KM/8016/M/*
20	12	3	3	8	11	8	13	7	24	2	95	0,306 kg	0,018 kg	KM/8020/M/*
25	12	4	7	10	9	8	17	9	28	2	104	0,383 kg	0,028 kg	KM/8025/M/*

* Please insert standard stroke length.

Cylinder variants

KM/8000/MF – Cylinder flat rear cover



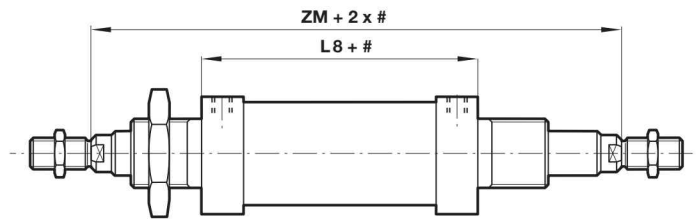
Ø	EE	ZJ		kg at 0 mm	kg per 25 mm	Model
12	M5	72	17	0,109	0,011	KM/8012/MF/*
16	M5	78	17	0,13	0,012	KM/8016/MF/*
20	G1/8	92	27	0,299	0,018	KM/8020/MF/*
25	G1/8	97	27	0,37	0,028	KM/8025/MF/*

* Please insert standard stroke length.

Note: missing dimensions see standard cylinders

KM/8000/JM –

Cylinder with double ended piston rod



Ø	L8	ZM	kg at 0 mm	kg per 25 mm	Model
16	56	100	0,14	0,018	KM/8016/JM/*
20	68	116	0,36	0,028	KM/8020/JM/*
25	69	125	0,44	0,043	KM/8025/JM/*

* Please insert standard stroke length.

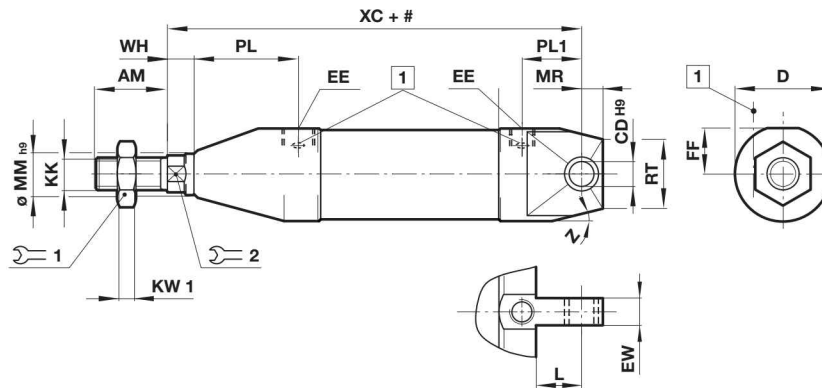
Note: missing dimensions see standard cylinders

Alternative variants

KM/8000/M/R – Cylinder with rear eye mounting

KM/8021/M/R, KM/8026/M/R – Cylinder with rear eye mounting and adjustable cushioning

Dimensions in mm
Projection/First angle



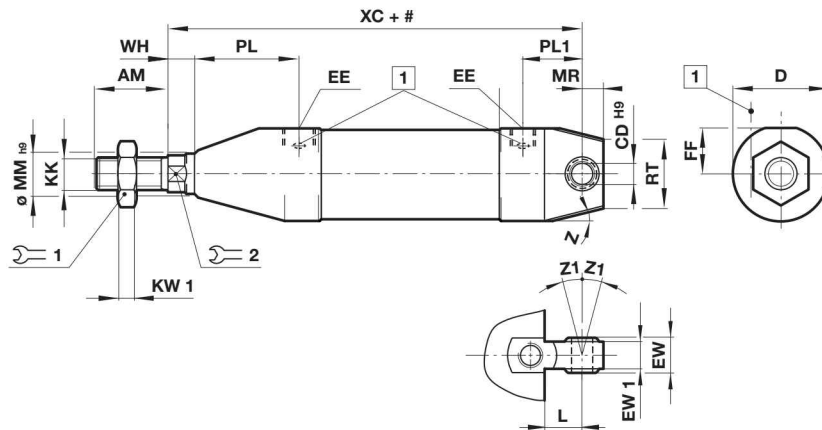
Stroke
1 Cushion screw

Ø	AM	Ø CD H9	Ø D	EE	EW -0,1	FF	KK	L	Ø MM h9	MR	PL	PL1	RT	WH	XC	Z	1	2	at 0 mm	per 25 mm	Model
12	16	6	20	M5	11,9	9	M6	9	6	11,5	23,5	15,5	10	4	75	5 x 45°	10	5	0,106 kg	0,011 kg	KM/8012/M/R/*
16	16	6	20	M5	11,9	9	M6	9	6	10,5	22,5	15	10	5	82	5 x 45°	10	5	0,130 kg	0,012 kg	KM/8016/M/R/*
20	20	8	30	G1/8	15,9	13,5	M8	12	8	12,5	18,5	18,5	13,5	4	95	30°	13	7	0,300 kg	0,018 kg	KM/8020/M/R/*
25	22	8	30	G1/8	15,9	13,5	M10x1,25	12	10	12,5	19,5	26,5	11,5	6	104	30°	17	9	0,360 kg	0,028 kg	KM/8025/M/R/*

* Please insert standard stroke length.

KM/8000/M/UR – Cylinder with universal rear eye mounting

KM/8021/M/UR, KM/8026/M/UR – Cylinder with universal rear eye mounting and adjustable cushioning



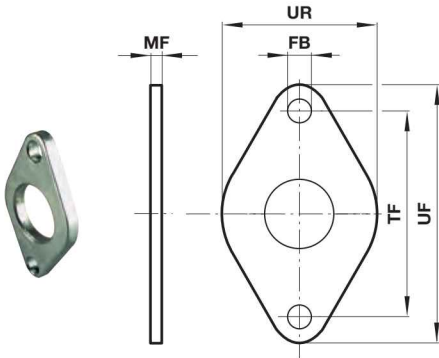
Stroke
1 Cushion screw

Ø	AM	Ø CD H9	Ø D	EE	EW -0,1	EW1	FF	KK	KW1	L	Ø MM h9	MR	PL	PL1	RT	WH	XC	Z	Z1	1	2	Model
12	16	6	20	M5	9	6,8	9	M6	3	9	6	11,5	23,5	15,5	—	4	75	5 x 45°	13°	10	5	KM/8012/M/UR/*
16	16	6	20	M5	9	6,8	9	M6	3	9	6	10,5	22,5	15	—	5	82	5 x 45°	13°	10	5	KM/8016/M/UR/*
20	20	8	30	G1/8	12	9	13,5	M8	4	12	8	12,5	20,5	18,5	14	4	95	30°	13°	13	7	KM/8020/M/UR/*
25	22	8	30	G1/8	12	9	13,5	M10x1,25	8	12	10	12,5	25,5	19,5	14	6	104	30°	13°	17	9	KM/8025/M/UR/*

* Please insert standard stroke length.
Weights see table on top.

Mountings

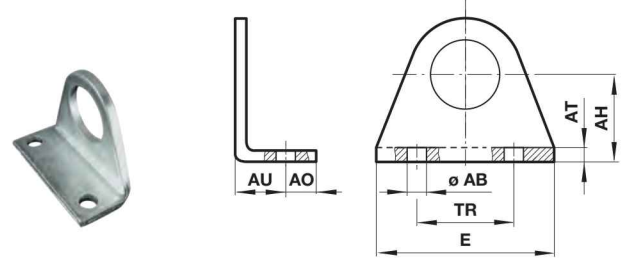
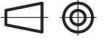
Front or rear flange G and B



Ø	Ø FB	MF	TF	UF	UR	kg	Model
12/16	5,5	4	40	52	30	0,03	M/P72405
20/25	6,6	5	50	66	40	0,05	M/P72406

Foot C Conforms to DIN ISO 6432

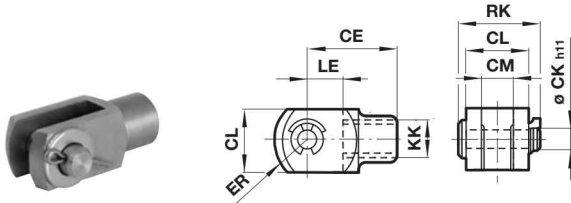
Dimensions in mm
Projection/First angle



Ø	Ø AB	AH	AO	AT	AU	E	TR	kg	Model
12/16	5,5	20	6	3	13	43	32	0,03	M/P72403
20/25	6,5	25	7,5	4	16	53	40	0,06	M/P72404

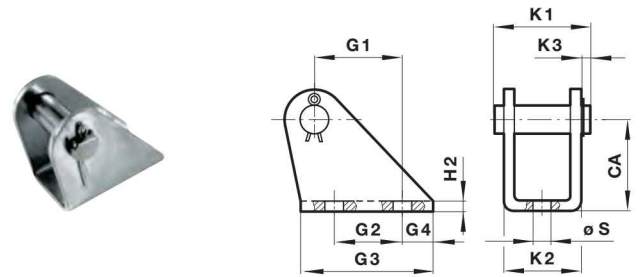
Piston rod clevis F

Conforms to DIN ISO 8140



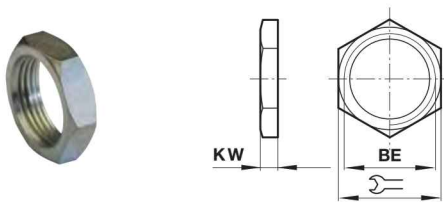
Ø	KK	CE	øCK h11	CL	CM	ER	LE	RK	kg	Model
12/16	M6	24	6	12	6	9,5	12	17,5	0,02	KQM/8012/25
20	M8	32	8	16	8	13	16	22	0,06	KQM/8020/25
25	M10x1,25	40	10	20	10	16	20	28	0,10	KQM/55433/25

Rear hinge L



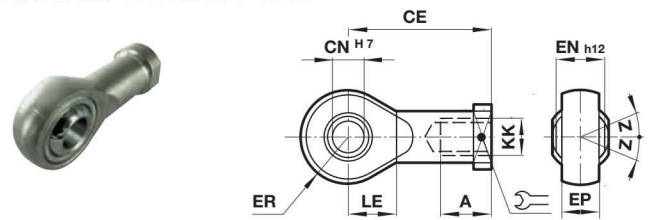
Ø	CA	G1	G2	G3	G4	H2	K1	K2	K3	Ø S	kg	Model
12/16	27	13	15	25	4	3	23	18	3	5,5	0,04	KQM/8012/24
20/25	30	16	20	32	6	4	29,5	24	3	6,6	0,08	KQM/8020/24

Nose nut N



Ø	BE	KW		kg	Model
12/16	M16x1,5	5	22	0,01	M/P72398
20/25	M22x1,5	8	27	0,02	M/P72399

Universal piston rod eye UF Conforms to DIN ISO 8139



Ø	KK	AX-1	CE	CN H7	EN -0,1	ER	LE	Z	kg	Model
12/16	M6	12	30	6	9	10,5	10	13°	0,02	KQM/8012/32
20	M8	16	36	8	12	12,5	12	13°	0,05	KQM/8020/32
25	M10x1,25	20	43	10	14	14,5	14	13°	0,08	KQM/8032/32

- Magnetically operated reed switch - Round style
- Suitable for all cylinder ranges with magnetic piston
- LED indicator on LSU models
- Alternative variants allows a wide range of application



Technical features

Operation: M/50/LSU Normally open with LED (yellow)	Switching power: 10 W/10 VA max.	Protection rating (EN 60529): IP66	Cable length: 2, 5 or 10 m
Switching voltage (U_b): 10 ... 240 V a.c./170 V d.c.	Contact resistance: 150 mΩ	Shock resistance: 50 g (during 11 ms)	Electromagnetic compatibility according to: EN 60947-5-2
Switching voltage output: U _b - 2,7 V	Response time: 1,8 ms	Vibration resistance: 35 g (at 2000 Hz)	Materials: Body: plastic Cable: see table below
Switching current (see graph overleaf): 0,18 A max.	Operating temperature: -25 ... +80 °C (-13 ... +176 °F)	Cable type: 2 x 0,25: PVC, PUR or silikon 3 x 0,25 PVC	
	High temperature version: +150 °C max.(+302 °F)		

Technical data - Reed switches - additional information see data sheet en 4.3.005

Symbol	Voltage (V a.c.)	Voltage (V d.c.)	Current maximum (mA)	Function	Operating temperature (°C)	LED	Protection class	Plug	Cable length (m)	Cable type	Weight (g)	Model
 ± BN ~ BU	10 ... 240	10 ... 170	180	Normally open	-25 ... +80	•	IP 66	—	2, 5 or 10	PVC 2 x 0,25	37	M/50/LSU/*V
	10 ... 240	10 ... 170	180	Normally open	-25 ... +80	•	IP 66	—	5	PUR 2 x 0,25	37	M/50/LSU/5U
 BN BU	10 ... 240	10 ... 170	180	Normally open	-25 ... +150	—	IP 66	—	2	Silicon 2 x 0,25	37	TM/50/RAU/2S
 BK BU BN	10 ... 240	10 ... 170	180	Changeover	-25 ... +80	—	IP 66	—	5	PVC 3 x 0,25	37	M/50/RAC/5V
 ± BN ~ BK	10 ... 60	10 ... 60	180	Normally open	-25 ... +80	•	IP 66	M8 x 1	0,3	PVC 3 x 0,25	16	M/50/LSU/CP *1)
	10 ... 60	10 ... 60	180	Normally open	-25 ... +80	•	IP 66	M12 x 1	0,3	PVC 3 x 0,25	16	M/50/LSU/CC *1)

* Insert cable length; *1) Plug-in connector see page 12

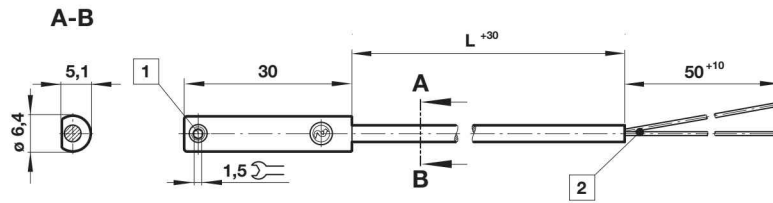
Dimensions

M/50/LSU/*V, M/50/LSU/5U,
 TM/50/RAU/2S
 Cable length L = 2, 5 or 10 m

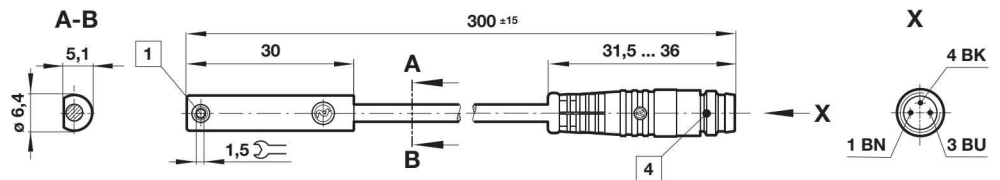
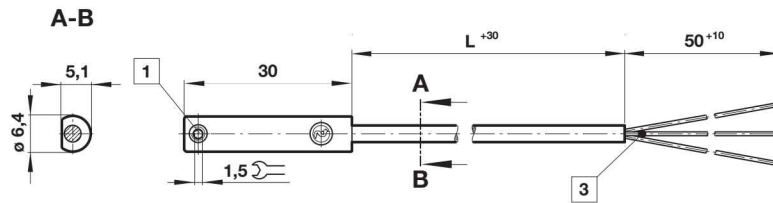
Dimensions in mm
 Projection/First angle



M/50/RAC/5V
 Cable length L = 5 m



M/50/LSU/CP
 M/50/LSU/CC



- 1 Fixing screw
- 2 + BN = brown; - BU = blue (output)
- 3 - BK = black; + BN = brown; - BU = blue
- 4 Version CP: Plug M8 x 1, color code: BK = +; BN = -; BU = output
 Version CC: Plug M12 x 1, color code: BK = +; BN = -; BU = output

- Magnetically operated switch, solid state - round style
- IO-Link version available
- Suitable for all cylinder ranges with magnetic piston
- Switches can be mounted flush in all profile cylinders
- Reliable switching with a very fast reponse time
- Particularly suited for use in high levels of vibration
- LED indicator as standard
- UL listed



Technical features

Operation: PNP / NPN (see table) Output with LED (yellow) Normally open (standard)	Switching power: 3,0 W max. (standard) 9,0 W max. (M/50/EHP)	Repeatability: < 0,1 mT	Cable length: 2, 5 and 10 m
Switching voltage (U_b): 10 ... 30 V d.c. ("supply class 2" acc. to cULus)	Response time: < 0,1 ms (standard) < 5 ms (M/50/IOP)	Protection rating (EN 60529): IP67 (standard) IP68 (M/50/EAP/5U, M/50/EHP/5U)	Electromagnetic compatibility according to: EN 60947-5-2
Voltage drop at output: < 2,5 V	Operating frequency: 1 kHz (standard) 200 Hz (M/50/IOP)	Operating temperature: -40 ... +80 °C (-40 ... 176 °F) -25 ... +80 °C (-13 ... 176 °F) (moving cable)	Materials: Housing: plastic Thread insert: brass Set screw: stainless steel Cable: see table below
Residual current: < 0,5 mA	Responsiveness: 2,8 mT	Cable type: PVC 3 x 0,14 mm ² (standard) PUR 3 x 0,14 mm ² (M/50/E*P/*U and all variants with connector)	Mounting type: Flush mountable
Switching current (see graph): 100 mA max. (standard) 300 mA max. (M/50/EHP)	Hysteresis: 0,5 ... 1,5 mT 0,2 mT (M/50/IOP)		

Technical data - Solid state - additional information see data sheet en 4.3.007

Symbol	Voltage (V DC)	Current maximum (mA)	Function	IO-Link *1)	Operating temperature (°C)	LED	Protection class	Connector	Cable length (m)	Cable type	Weight (g)	Model
	10 ... 30	100	PNP		-40 ... +80	•	IP67	---	2	PVC 3 x 0,14	23	M/50/EAP/2V
	10 ... 30	100	PNP		-40 ... +80	•	IP67	---	5	PVC 3 x 0,14	56	M/50/EAP/5V
	10 ... 30	100	PNP		-40 ... +80	•	IP67	---	10	PVC 3 x 0,14	102	M/50/EAP/10V
	10 ... 30	100	PNP / NPN	•	-40 ... +80	•	IP67	---	5	PVC 3 x 0,14	56	M/50/IOP/5V
	10 ... 30	100	PNP		-40 ... +80	•	IP68	---	5	PUR 3 x 0,14	56	M/50/EAP/5U
	10 ... 30	100	PNP		-40 ... +80	•	IP67	---	10	PUR 3 x 0,14	102	M/50/EAP/10U
	10 ... 30	300	PNP		-40 ... +80	•	IP67	---	2	PVC 3 x 0,14	23	M/50/EHP/2V
	10 ... 30	300	PNP		-40 ... +80	•	IP67	---	5	PVC 3 x 0,14	56	M/50/EHP/5V
	10 ... 30	300	PNP		-40 ... +80	•	IP67	---	10	PVC 3 x 0,14	102	M/50/EHP/10V
	10 ... 30	300	PNP		-40 ... +80	•	IP68	---	5	PUR 3 x 0,14	56	M/50/EHP/5U
	10 ... 30	100	PNP		-40 ... +80	•	IP67	M8 x 1	0,3	PUR 3 x 0,14	7	M/50/EAP/CP
	10 ... 30	100	PNP / NPN	•	-40 ... +80	•	IP67	M8 x 1	0,3	PUR 3 x 0,14	7	M/50/IOP/CP
	10 ... 30	100	PNP		-40 ... +80	•	IP67	M12 x 1	0,3	PUR 3 x 0,14	16	M/50/EAP/CC
	10 ... 30	100	PNP		-40 ... +80	•	IP67	M12 x 1	2	PUR 3 x 0,14	35	M/50/EAP/CC/2
	10 ... 30	100	PNP / NPN	•	-40 ... +80	•	IP67	M12 x 1	0,3	PUR 3 x 0,14	16	M/50/IOP/CC
	10 ... 30	100	NPN		-40 ... +80	•	IP67	---	2	PVC 3 x 0,14	23	M/50/EAN/2V
	10 ... 30	100	NPN		-40 ... +80	•	IP67	---	5	PVC 3 x 0,14	56	M/50/EAN/5V
	10 ... 30	100	NPN		-40 ... +80	•	IP67	---	10	PVC 3 x 0,14	102	M/50/EAN/10V
	10 ... 30	100	NPN		-40 ... +80	•	IP67	M8 x 1	0,3	PUR 3 x 0,14	7	M/50/EAN/CP

Color code: see next page *1) IO-Link functionality: see next page

IO-Link Switch conforming to IEC 61131-9

Properties and Functionality	M/50/EAP, M/50/EAN M/50/EHP	M/50/IOP
Operating Mode	Standard	Standard
Power LED		• •
LED sensor signal	•	• •
Normally open (delivery status)	•	• •
Normally closed		○ •
Delay mode		○ •
Installation aid		• •
Temperature measurement		•
Detection counter		•
Teach functionality		•
Responsiveness adjustment		•

Note: IODD for the M/50/IOP switches available on the Norgren homepage.

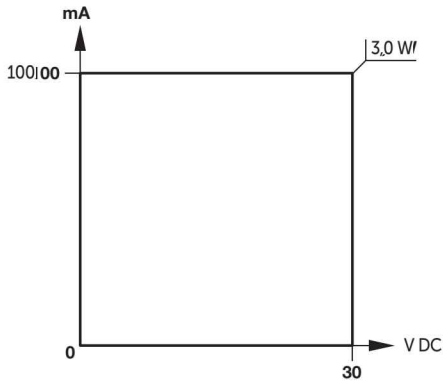
<https://www.norgren.com/uk/en/technical-support/software>

• = included

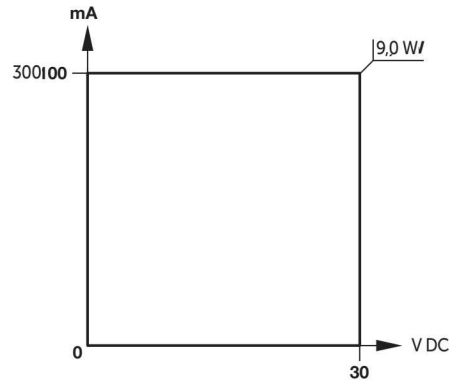
○ = optional (manufacture pre-setting required)

Switching current and switching voltage

M/50/EAP, M/50/EAN, M/50/IOP



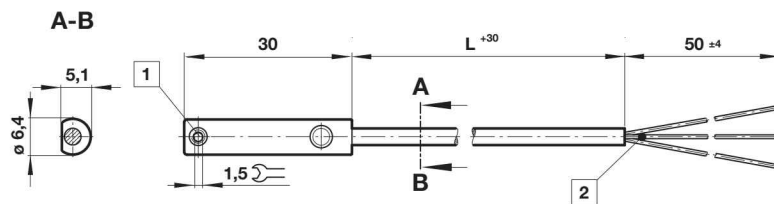
M/50/EHP



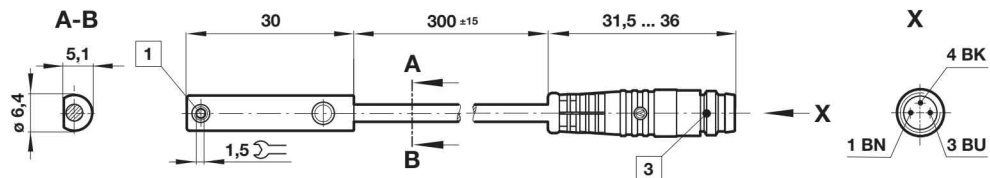
Dimensions

M/50/EAP/*V,
M/50/EAN/*U,
M/50/IOP/5V,
M/50/EHP/*V,
M/50/EHP/5U,
M/50/EAN/*V
Cable length L = 2, 5 or 10 m

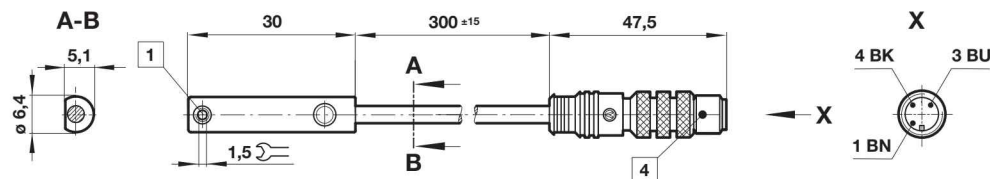
Dimensions in mm
Projection/First angle



M/50/EAP/CP,
M/50/EAN/CP,
M/50/IOP/CP,
M/50/EHP/CP



M/50/EAP/CC,
M/50/IOP/CC,
M/50/EHP/CC



1 Fixing screw

2 Color code: BK = black (output); BN = brown (+); BU = blue (-)

3 Connector M8 x 1; 1 BN = +; 3 BU = -; 4 BK = output

4 Connector M12 x 1; 1 BN = +; 3 BU = -; 4 BK = output

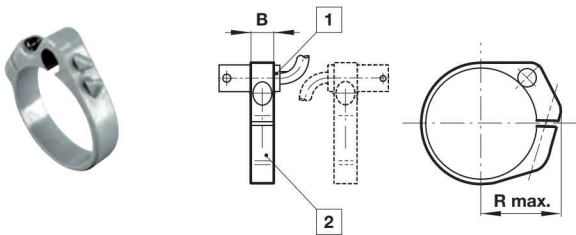
Accessories

Plug-in connector cable with nut



Outer cover	Cable length (m)	Weight (kg)	Connector	Model
PVC 3 x 0,25	5	0,18	M8 x 1 straight connector	M/P73001/5
PUR 3 x 0,25	5	0,18	M8 x 1 straight connector	M/P73002/5
PVC 3 x 0,25	5	0,18	M8 x 1 angled connector 90 °	M/P34615/5
PUR 3 x 0,25	5	0,18	M8 x 1 angled connector 90 °	M/P34596/5
PUR 3 x 0,34	5	0,21	M12 x 1 straight connector	M/P34594/5

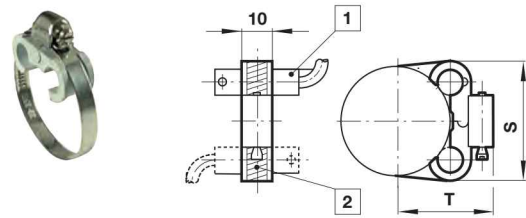
Switch mounting brackets - Brackets > 15 mm stroke



- 1 Magnetically operated switch
- 2 Switch mounting bracket

Ø	B	R max.	kg	Model
10	8	16	0,01	QM/33/010/22
12	8	18	0,01	QM/33/012/22
16	10	20	0,01	QM/33/016/22
20	10	22	0,01	QM/33/020/22
25	10	24	0,01	QM/33/025/22

Switch mounting brackets - Brackets < 15 mm stroke



- 1 Magnetically operated switch
- 2 Switch mounting bracket

Ø	S	T	kg	Model
10	27,5	19,5	0,01	QM/33/010/23
12	28,5	21,5	0,01	QM/33/016/23
16	29,5	23,5	0,01	QM/33/016/23
20	29,5	26	0,01	QM/33/020/23
25	31,5	28,5	0,01	QM/33/025/23

Warning

These products are intended for use in industrial compressed air systems only. Do not use these products where pressures and temperatures can exceed those listed under »Technical features/data«.

Before using these products with fluids other than those specified, for non-industrial applications, life-support systems or other applications not within published specifications, consult Norgren.

Through misuse, age, or malfunction, components used in fluid power systems can fail in various modes.

The system designer is warned to consider the failure modes of all component parts used in fluid power systems and to provide adequate safeguards to prevent personal injury or damage to equipment in the event of such failure.

System designers must provide a warning to end users in the system instructional manual if protection against a failure mode cannot be adequately provided.

System designers and end users are cautioned to review specific warnings found in instruction sheets packed and shipped with these products.